

WRIGHTSTOWN, NEW JERSEY

VOR/DME or TACAN RWY 6

MC GUIRE FLD,
R-063 to CUGON, expect further clearance from ATC.

VORTAC GXU 110.6 Chan 43	APCH CRS 044°	Rwy Idg 10,014 TDZE 131 Arprt Elev 141
--	-------------------------	---

AL-150 [USAF]

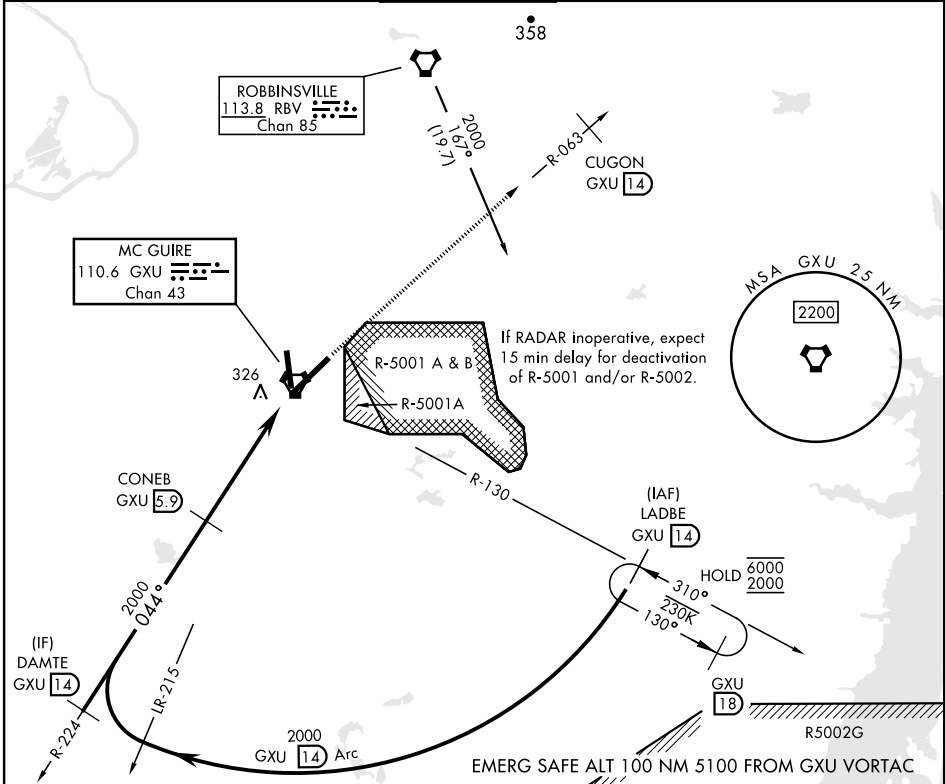
(JOINT BASE MC GUIRE DIX LAKEHURST) (KWRI)

RADAR required when R-5001 and/or R-5002 is active.

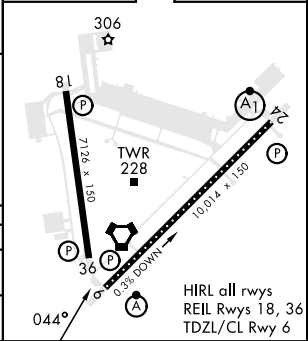
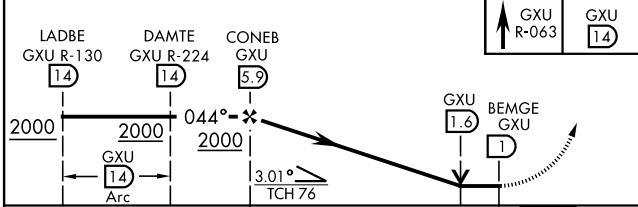


MISSED APPROACH: Climb to 2000 via GXU VORTAC R-063 to CUGON, expect further clearance from ATC.

ATIS 110.6 270.1	MC GUIRE APP CON/DEP CON 126.475 363.8	MC GUIRE TOWER 118.65 255.6	GND CON 121.8 275.8	CLNC DEL 135.2 335.8	PAR
----------------------------	--	---------------------------------------	-------------------------------	--------------------------------	-----



2000	CUGON GXU 14	ELEV 141	TDZE 131
------	--------------	----------	----------



CATEGORY	A	B	C	D	E
S-6 *	640/24 509 (500-½)		640/55 509	(500-1)	
CIRCLING **	680-1 539 (600-1)		700-1½ 559 (600-1½)	700-2 559 (600-2)	1200-3 1059 (1100-3)

WRIGHTSTOWN, NEW JERSEY

40°01'N-74°36'W

MC GUIRE FLD,
R-063 to CUGON, expect further clearance from ATC.

Amtd 7 18MAY23

VOR/DME or TACAN RWY 6

NE-2, 26 DEC 2024 to 23 JAN 2025

NE-2, 26 DEC 2024 to 23 JAN 2025