

FORT KNOX, KENTUCKY

RNAV (GPS) RWY 36

APCH CRS	Rwy Idg	5184
015°	TDZE	740
	Arprt Elev	754

AL-151 [USA]

GODMAN AAF (KFTK)

RNP APCH - GPS

ODALS

MISSED APPROACH: Climbing left turn to 2500 direct HONAL and hold.

▼ * Straight-in Rwy 36 at night, operational VGSI required, remain on or above VGSI glidepath until threshold. When ALS inop, increase CAT CD vis to 1½ miles. Helicopter visibility reduction below 1 mile NA.

ATIS
109.6

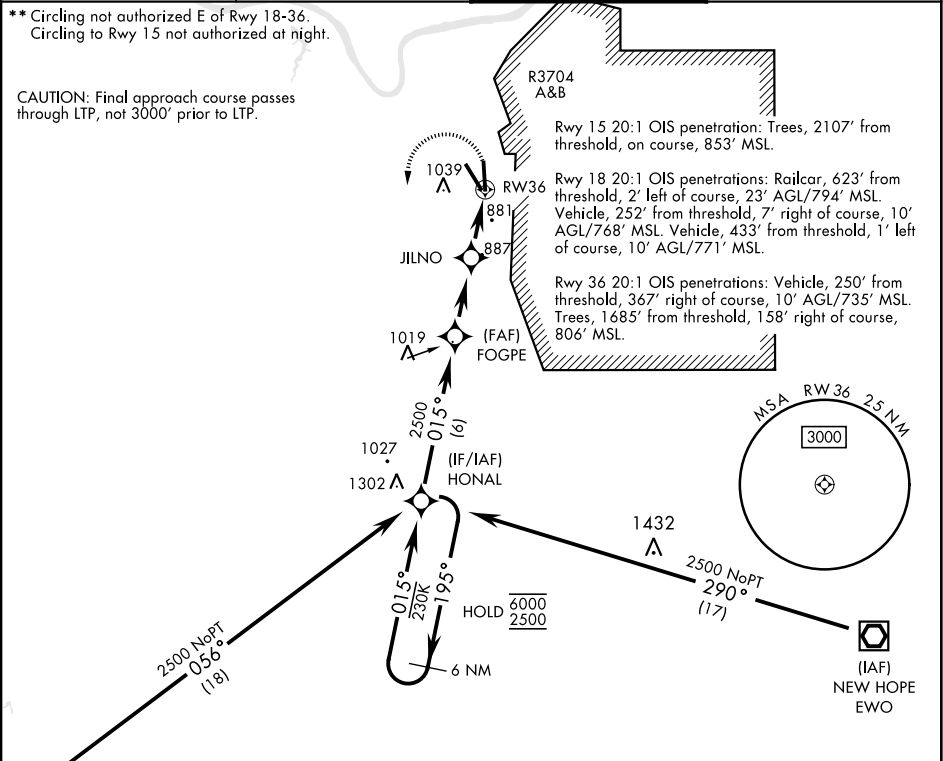
LOUISVILLE APP CON
132.075 327.0

TOWER ★
133.35 (CTAF) 0

GND CON
121.9 239.3

** Circling not authorized E of Rwy 18-36.
Circling to Rwy 15 not authorized at night.

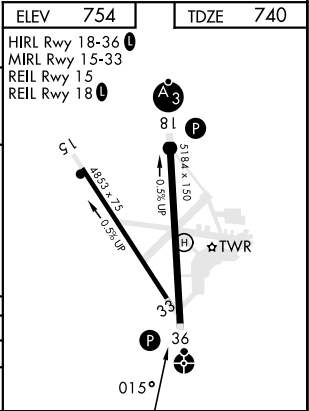
CAUTION: Final approach course passes through LTP, not 3000' prior to LTP.



SE-1, 26 DEC 2024 to 23 JAN 2025

SE-1, 26 DEC 2024 to 23 JAN 2025

ELEV 754		TDZE 740	
HIRL Rwy 18-36		MIRL Rwy 15-33	
REIL Rwy 15		REIL Rwy 18	
VGSI and descent angles not coincident.			
6 NM Holding Pattern		HONAL	
6000	← 195°	→ 015°	2500
2500	← 015°	→ 015°	2500
3.00° TCH 55		JILNO	
		1580	
		RWY 36	
		2.9 NM	
		2.5 NM	
CATEGORY	A	B	D
LNAV MDA*	1240-1	500 (500-1)	1240-1¼ 500 (500-1¼)
CIRCLING**	1340-1	586 (600-1)	1340-2 586 (600-2)



FORT KNOX, KENTUCKY

37° 54' N-85° 58' W

GODMAN AAF (KFTK)

Amdt 1 13JUL23

RNAV (GPS) RWY 36