

FORT KNOX, KENTUCKY

VOR/DME RWY 36

VOR/DME FTK 109.6 Chan 33	APCH CRS 349°	Rwy ldg TDZE 5184 740 Arprt Elev 754
---	-------------------------	--

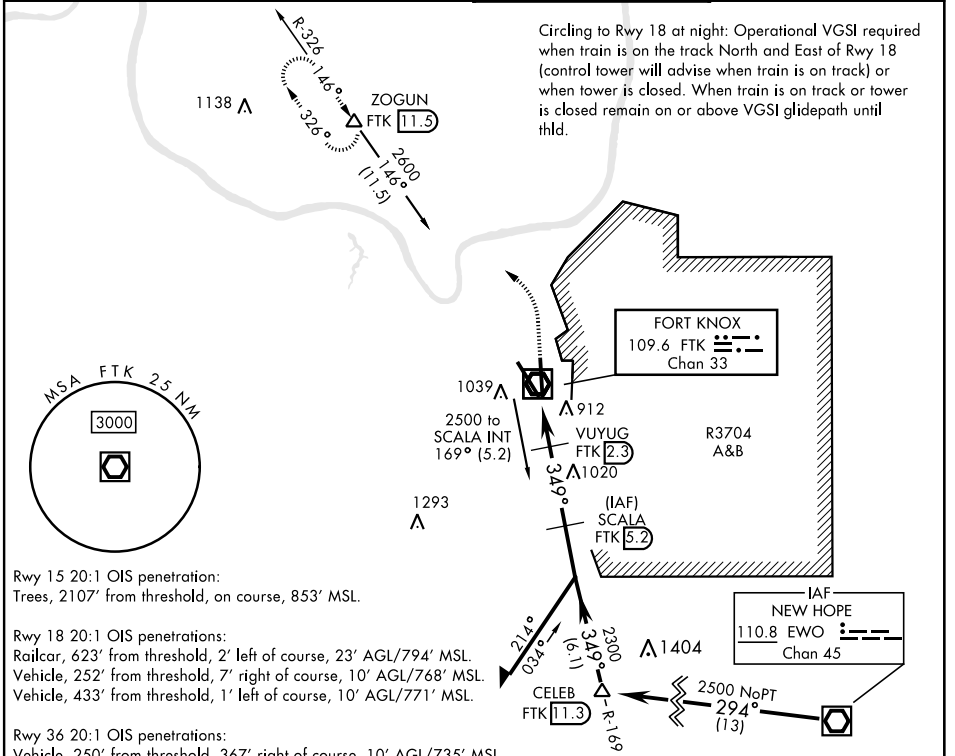
AL-151 [USA]

GODMAN AAF (KF TK)

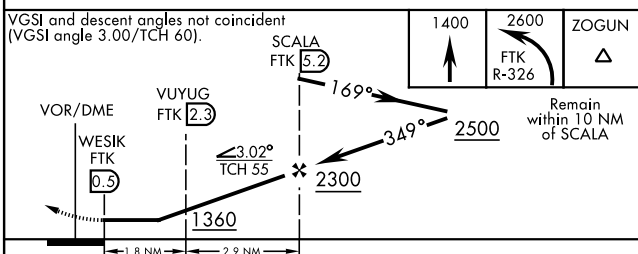
▼ * At night, operational VGS I required, remain on or above VGS I glidepath until threshold. Visibility reduction by helicopters not authorized. ** Circling NA E of Rwy 18-36. Circling to rwy 15 NA at night.

ODALS
MISSED APPROACH: Climb to 1400, then climbing left turn to 2600 on FTK VOR/DME R-326 to ZOGUN INT/FTK 11.5 DME and hold.

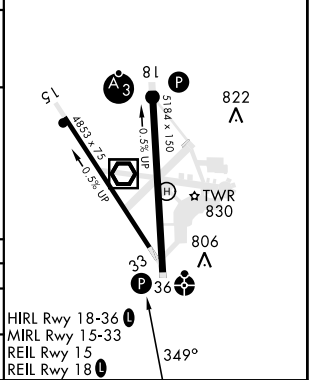
ATIS 109.6	LOUISVILLE APP CON 132.075 327.0	TOWER ★ 133.35 (CTAF) 0	GND CON 121.9 239.3
----------------------	--	-----------------------------------	-------------------------------



- Rwy 15 20:1 OIS penetration:
Trees, 2107' from threshold, on course, 853' MSL.
- Rwy 18 20:1 OIS penetrations:
Railcar, 623' from threshold, 2' left of course, 23' AGL/794' MSL.
Vehicle, 252' from threshold, 7' right of course, 10' AGL/768' MSL.
Vehicle, 433' from threshold, 1' left of course, 10' AGL/771' MSL.
- Rwy 36 20:1 OIS penetrations:
Vehicle, 250' from threshold, 367' right of course, 10' AGL/735' MSL.
Trees, 1685' from threshold, 158' right of course, 806' MSL.



ELEV 754	TDZE 740
-----------------	-----------------



CATEGORY	A	B	C	D
S-36*	1180-1 440 (500-1)		1180-1¼ 440 (500-1¼)	
CIRCLING**	1340-1 586 (600-1)		1340-1½ 586 (600-1½)	1340-2 586 (600-2)

FORT KNOX, KENTUCKY 37°54'N-85°58'W GODMAN AAF (KF TK)

Amtd 2 10AUG23

VOR/DME RWY 36

SE-1, 26 DEC 2024 to 23 JAN 2025

SE-1, 26 DEC 2024 to 23 JAN 2025