

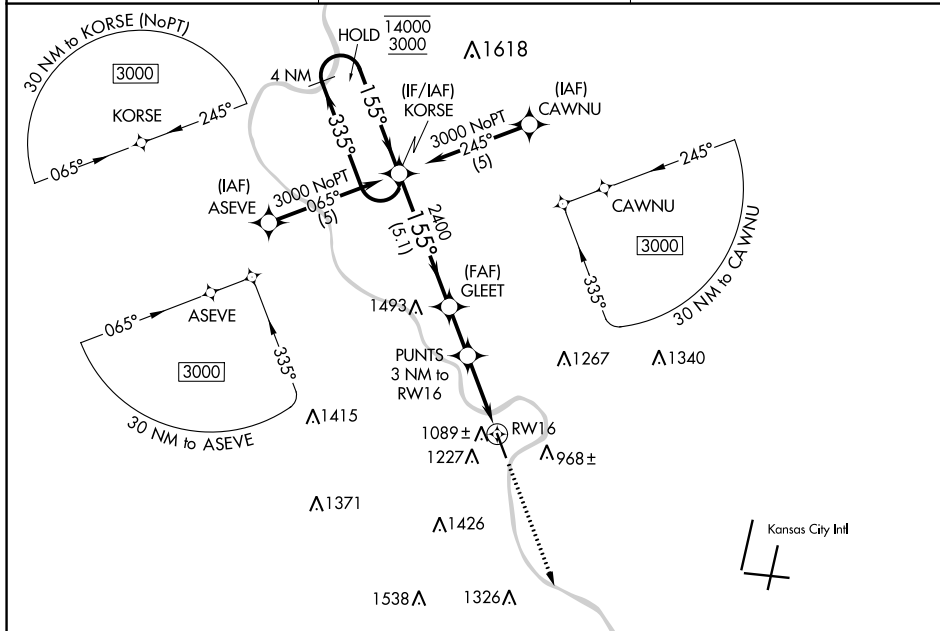
APP CRS	Rwy Idg	5318
155°	TDZE	771
	Apt Elev	771

RNAV (GPS) RWY 16

SHERMAN AAF (FLV)

RNP APCH - GPS.	MISSED APPROACH: Climb to 3100 direct PAKLY and hold.
<p>V Circling NA west of Rwy 16-34. Procedure NA at night. Rwy 16 helicopter visibility reduction below 1 SM NA. Use Kansas City Intl altimeter setting.</p> <p>NA</p>	

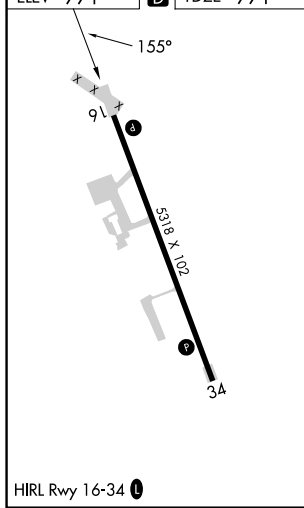
MCI ASOS 128.375	KANSAS CITY APP CON 124.7 284.7	CTAF 126.20
----------------------------	---	-----------------------



NC-2, 26 DEC 2024 to 23 JAN 2025

NC-2, 26 DEC 2024 to 23 JAN 2025

ELEV 771	D	TDZE 771
-----------------	----------	-----------------



4 NM Holding Pattern				VGSI and descent angles not coincident (VGSI Angle 3.00/TCH 40).		3100	PAKLY															
14000	← 335°	→ 155°	155°	GLEET	3.04°	TCH 50	RW16															
3000			2400			1780																
				5.1 NM	1.9 NM	3 NM																
<table border="1"> <thead> <tr> <th>CATEGORY</th> <th>A</th> <th>B</th> <th>C</th> <th>D</th> </tr> </thead> <tbody> <tr> <td>LNAV MDA</td> <td>1520-1 749 (800-1)</td> <td>1520-1¼ 749 (800-1¼)</td> <td>1520-2 749 (800-2)</td> <td>NA</td> </tr> <tr> <td>C CIRCLING</td> <td>1520-1 749 (800-1)</td> <td>1520-1¼ 749 (800-1¼)</td> <td>1520-2¼ 749 (800-2¼)</td> <td>NA</td> </tr> </tbody> </table>	CATEGORY	A	B	C	D	LNAV MDA	1520-1 749 (800-1)	1520-1¼ 749 (800-1¼)	1520-2 749 (800-2)	NA	C CIRCLING	1520-1 749 (800-1)	1520-1¼ 749 (800-1¼)	1520-2¼ 749 (800-2¼)	NA							
CATEGORY	A	B	C	D																		
LNAV MDA	1520-1 749 (800-1)	1520-1¼ 749 (800-1¼)	1520-2 749 (800-2)	NA																		
C CIRCLING	1520-1 749 (800-1)	1520-1¼ 749 (800-1¼)	1520-2¼ 749 (800-2¼)	NA																		