

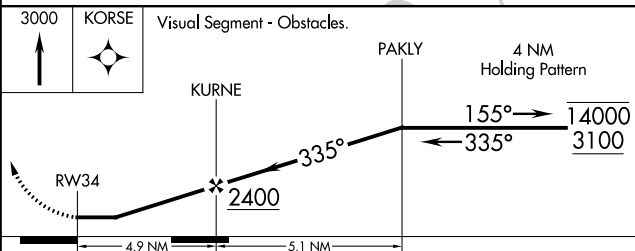
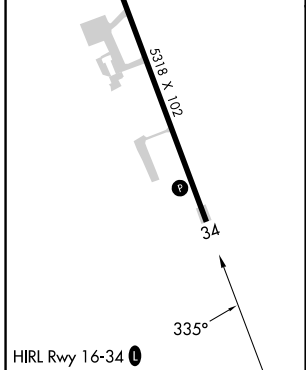
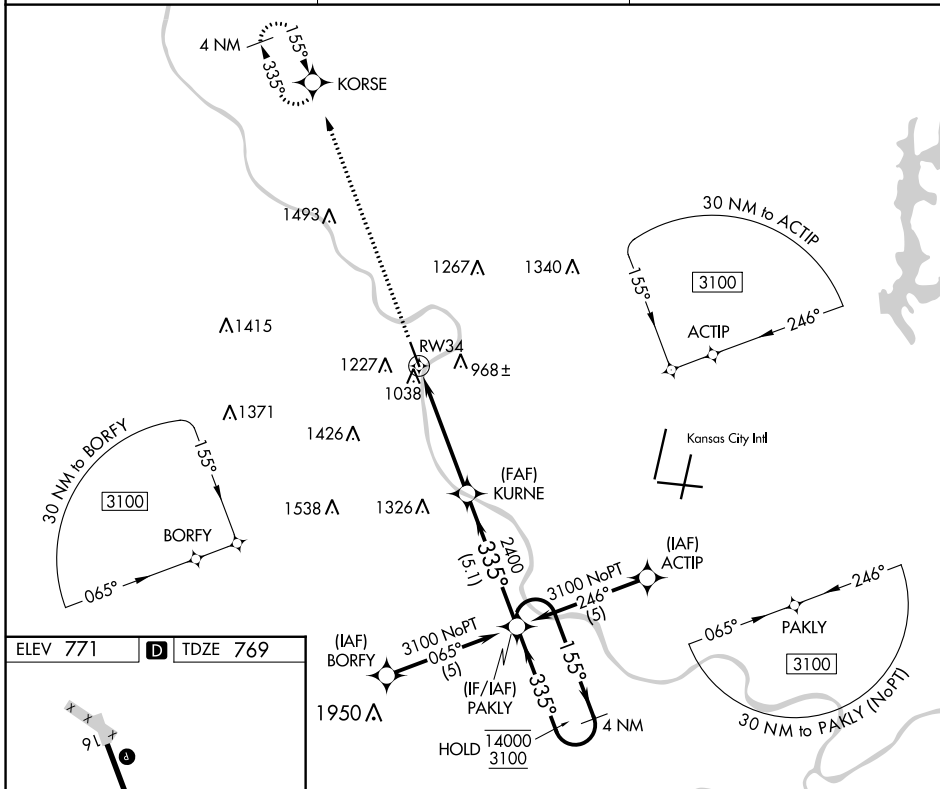
APP CRS	Rwy Idg	<b>5318</b>
<b>335°</b>	TDZE	<b>769</b>
	Apt Elev	<b>771</b>

# RNAV (GPS) RWY 34

SHERMAN AAF (FLV)

RNP APCH - GPS.	MISSED APPROACH: Climb to 3000 direct KORSE and hold.
<p><b>▼</b> Circling NA west of Rwy 16-34. Procedure NA at night. Rwy 34 helicopter visibility reduction below 1 SM NA. Use Kansas City Intl altimeter setting.</p> <p><b>▲</b> NA</p>	

MCI ASOS <b>128.375</b>	KANSAS CITY APP CON <b>124.7 284.7</b>	CTAF <b>126.2</b>
----------------------------	---	----------------------



CATEGORY	A	B	C	D
LNAV MDA	1560-1 791 (800-1)	1560-1¼ 791 (800-1¼)	1560-2½ 791 (800-2½)	NA
<b>C</b> CIRCLING	1560-1 789 (800-1)	1560-1¼ 789 (800-1¼)	1560-2½ 789 (800-2½)	NA

NC-2, 26 DEC 2024 to 23 JAN 2025

NC-2, 26 DEC 2024 to 23 JAN 2025