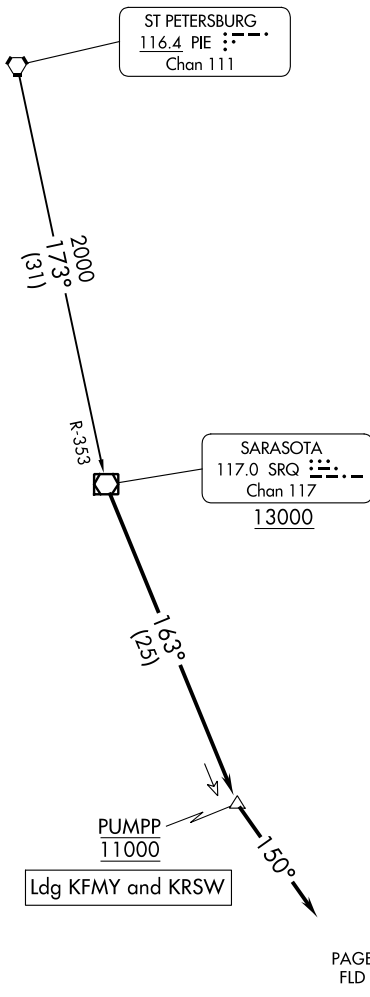


# PUMPP ONE ARRIVAL

FORT MYERS, FLORIDA

FORT MYERS APP CON ★  
134.425 306.2  
FMY ATIS  
123.725  
RSW D-ATIS  
124.65

RADAR required.  
DME required.



SE-3, 26 DEC 2024 to 23 JAN 2025

SE-3, 26 DEC 2024 to 23 JAN 2025

NOTE: Chart not to scale.

## ARRIVAL ROUTE DESCRIPTION

ST PETERSBURG TRANSITION (PIE.PUMPP1): From over PIE VORTAC on PIE R-173 and SRQ R-353 to SRQ VOR/DME, thence. . .

. . .from over SRQ VOR/DME on SRQ R-163 to cross PUMPP at 11000, then on heading 150°. Expect RADAR vectors to final approach course.

# PUMPP ONE ARRIVAL

FORT MYERS, FLORIDA