

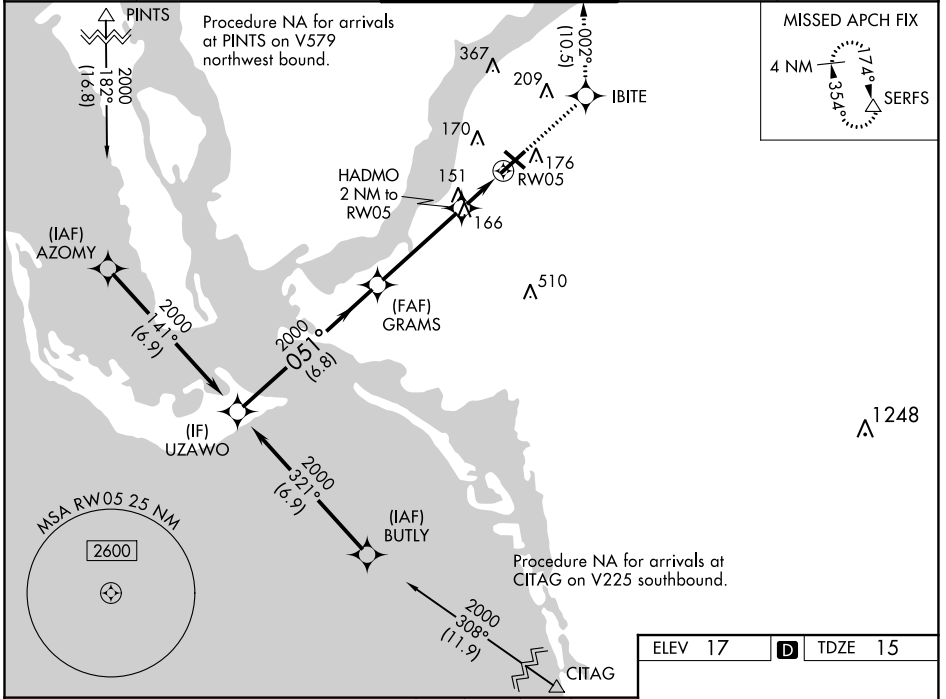
WAAS CH 72624 W05A	APP CRS 051°	Rwy Idg 5545 TDZE 15 Apt Elev 17
--	------------------------	---

RNAV (GPS) RWY 5

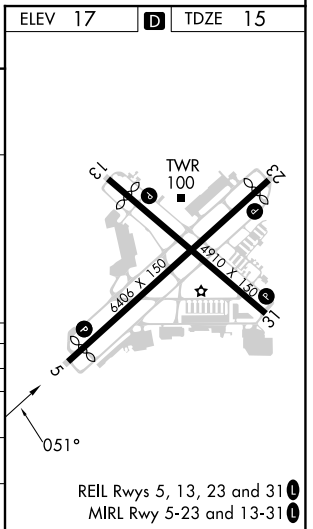
PAGE FLD (FMY)

RNP APCH.	<p>When Circling to Rwy 31 at night, operational VGSI required, remain on or above VGSI glidepath until threshold. Rwy 5 helicopter visibility reduction below 3/4 SM NA. For uncompensated Baro-VNAV systems, LNAV/VNAV NA below 4°C or above 54°C.</p>	<p>MISSED APPROACH: Climb to 2600 direct IBITE and on track 002° to SERFS and hold.</p>
-----------	--	---

ATIS 123.725	FORT MYERS APP CON ★ 125.15 306.2 (Rwys 5, 13) 126.8 306.2 (Rwys 23, 31)	PAGE TOWER ★ 119.0 (CTAF) 306.95	GND CON 121.7	CLNC DEL 121.7
------------------------	--	---	-------------------------	--------------------------



	2600	IBITE	SERFS
	↑	✧	tr 002° △
UZAWO	GRAMS	HADMO 2 NM to RW05	*LNAV only.
2000	2000	*1.1 NM to RW05	RW05
GP 3.00°	051°	*700	
TCH 53	6.8 NM	4.1 NM	0.9 NM 1.1 NM
CATEGORY	A	B	C
LPV DA		265-3/4	250 (300-3/4)
LNAV/VNAV DA		317-7/8	302 (300-7/8)
LNAV MDA	420-1	405 (500-1)	420-1 1/8 405 (500-1 1/8)
CIRCLING	540-1	523 (600-1)	600-1 1/2 583 (600-1 1/2) 680-2 663 (700-2)



SE-3, 26 DEC 2024 to 23 JAN 2025

SE-3, 26 DEC 2024 to 23 JAN 2025