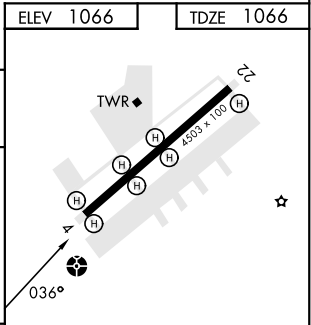
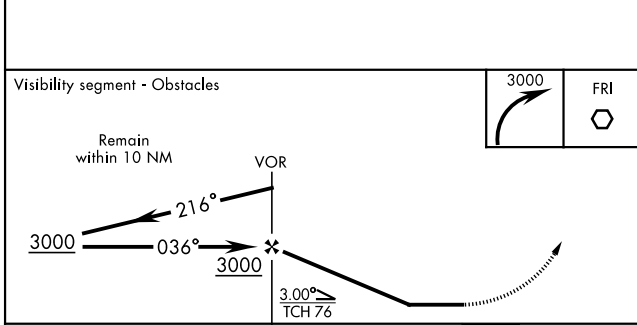
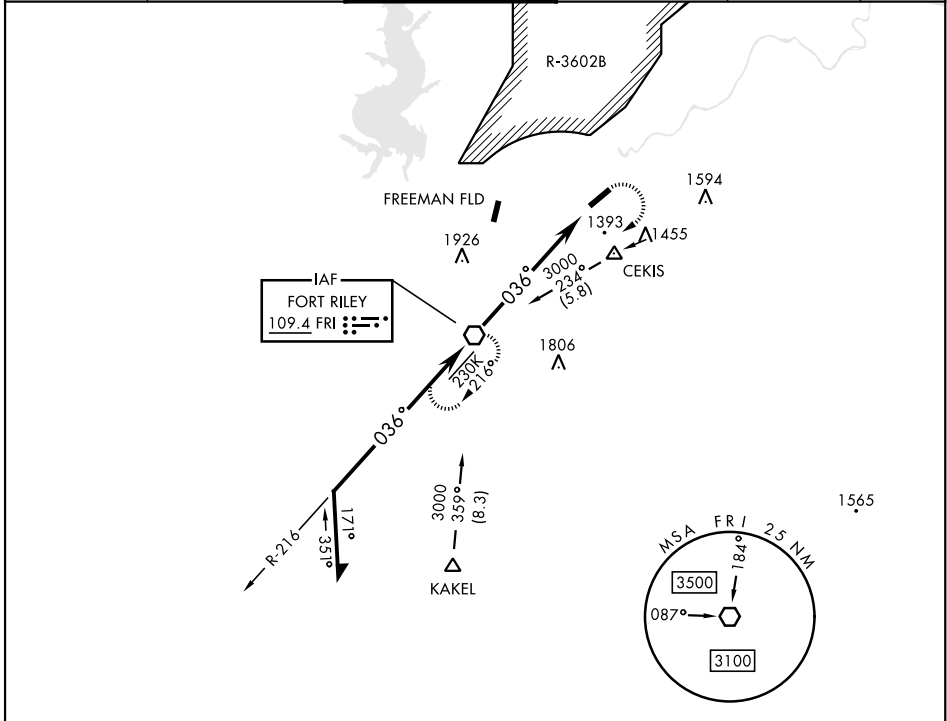


# VOR RWY 4

VOR FRI <b>109.4</b>	APCH CRS <b>036°</b>	Rwy ldg 4503 TDZE 1066 Arprt Elev 1066	AL-155 [USA]	MARSHALL AAF (KFRI)
-------------------------	-------------------------	---	--------------	---------------------

▼ \* Circling not authorized NW of Rwy 4-22. Rwy 4 helicopter visibility reduction below 3/4 mile not authorized.
ODALS
MISSED APPROACH: Climbing right turn to 3000 direct FRI VOR and hold.

ATIS ★ <b>121.025</b>	MARSHALL GCA <b>121.25 254.35</b>	TOWER ★ <b>126.2 (CTAF) 248.65</b>	GND CON <b>140.20 229.4</b>	CLNC DEL <b>119.65</b>	ASR/PAR
--------------------------	--------------------------------------	---------------------------------------	--------------------------------	---------------------------	---------



CATEGORY	A	B	C	D
S-4	1800-1 734 (800-1)	1800-2 734 (800-2)		
CIRCLING *	1800-1 734 (800-1)	1800-2 734 (800-2)	1900-2 834 (900-2 3/4)	

HIRL Rwy 4-22  
 FAF to MAP 6.3 NM  
 Knots: 60 90 120 150 180  
 Min:Sec: 6:18 4:12 3:09 2:31 2:06

# VOR RWY 4

NC-2, 26 DEC 2024 to 23 JAN 2025

NC-2, 26 DEC 2024 to 23 JAN 2025