

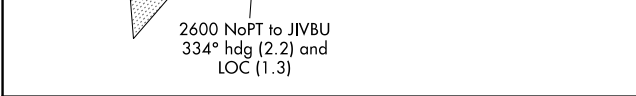
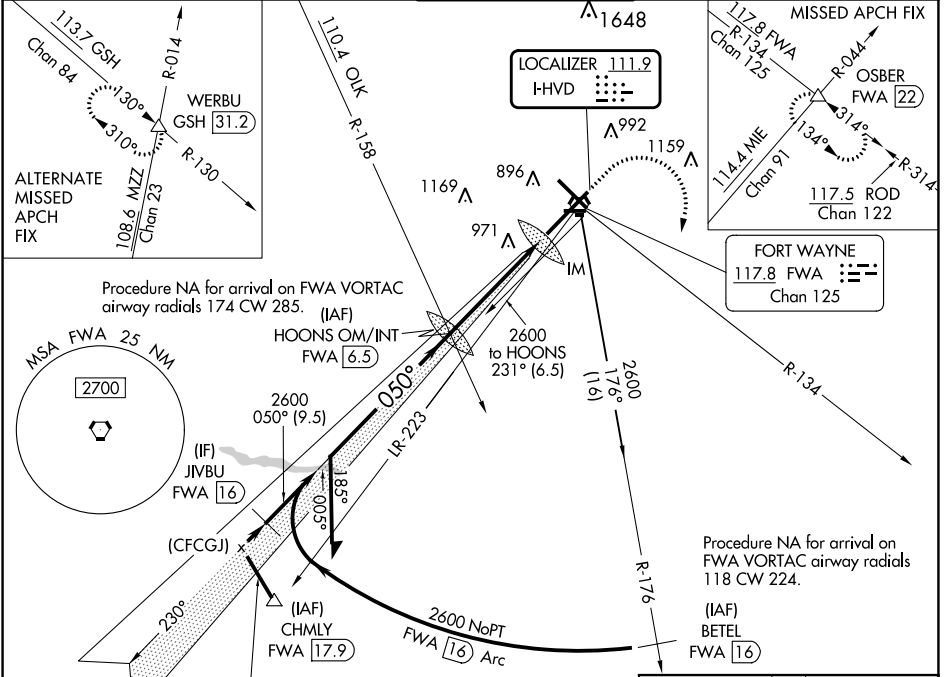
LOC I-HVD 111.9	APP CRS 050°	Rwy ldg TDZE Apt Elev	11981 815 815
---------------------------	------------------------	-----------------------------	--

ILS RWY 5 (CAT II)

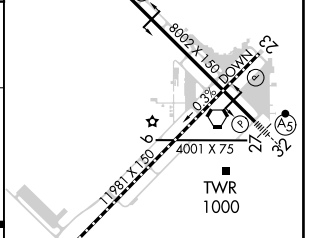
FORT WAYNE INTL (FWA)

 ASR	ALSF-2 	MISSED APPROACH: Climb to 3000 then climbing right turn to 3000 on FWA R-134 to OSBER INT/FWA 22 DME and hold.
---------	------------	--

ATIS 121.25 360.825	FORT WAYNE APP CON 127.2 284.6	FORT WAYNE TOWER 119.1 269.325	GND CON 121.9 348.6	CLNC DEL 124.75
-------------------------------	--	--	-------------------------------	---------------------------



ELEV	815	TDZE	815
------	-----	------	-----



CATEGORY	A	B	C	D
S-ILS 5	RA 106/12 100 DA 915			

CATEGORY II ILS - SPECIAL AIRCREW & AIRCRAFT CERTIFICATION REQUIRED

TDZ/CL Rwy 5
REIL Rws 14 and 23
HIRL Rws 5-23 and 14-32

EC-2, 26 DEC 2024 to 23 JAN 2025

EC-2, 26 DEC 2024 to 23 JAN 2025