

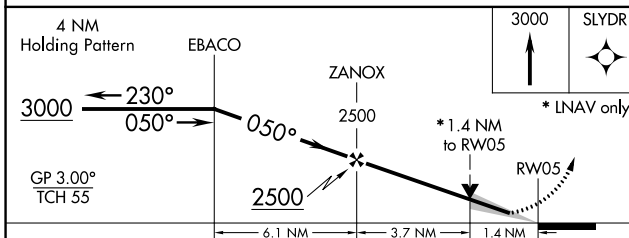
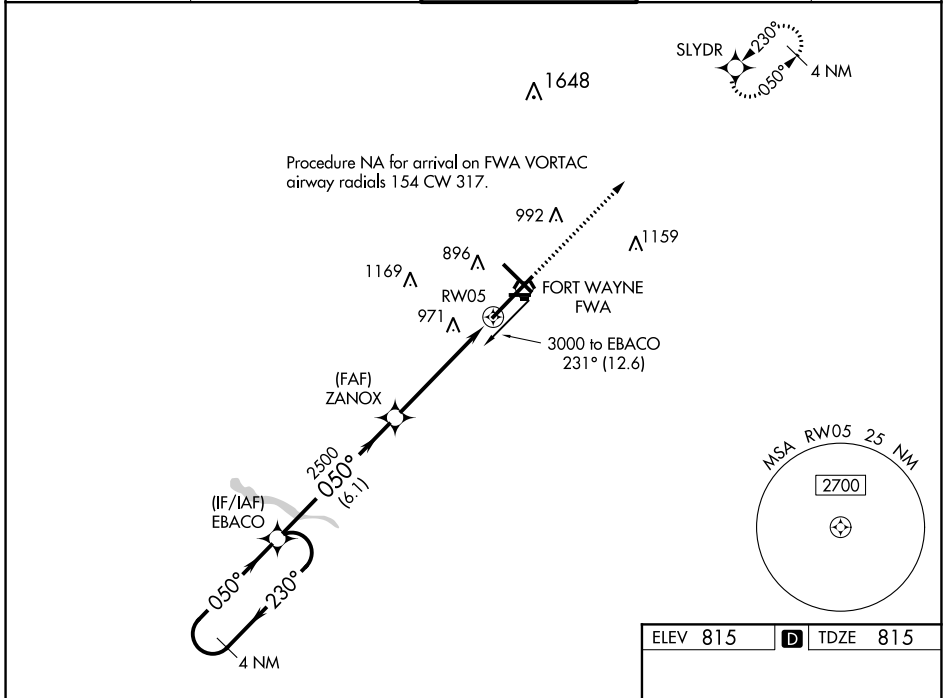
WAAS CH 93609 W05A	APP CRS 050°	Rwy Idg 11981 TDZE 815 Apt Elev 815
----------------------------------------	------------------------	----------------------------------------------------------------

RNAV (GPS) RWY 5

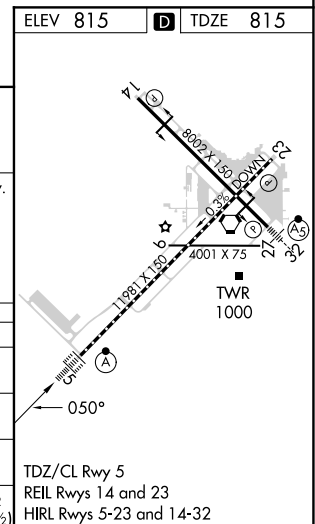
FORT WAYNE INTL (FWA)

For uncompensated Baro-VNAV systems, procedure NA below -16°C (4°F) or above 47°C (116°F). DME/DME RNP-0.3 NA. For inop ALS, increase LPV Cat E visibility to RVR 4000, LNAV/VNAV all Cats visibility to 1½ SM and LNAV Cat C/D/E visibility to 1¾ SM.	ALSF-2 	MISSED APPROACH: Climb to 3000 direct SLYDR and hold.
	ATIS 121.25 360.825	FORT WAYNE APP CON 127.2 284.6

GND CON 121.9 348.6	CLNC DEL 124.75
-------------------------------	---------------------------



CATEGORY	A	B	C	D	E
LPV DA	1065/18 250 (300-½)				
LNAV/VNAV DA	1275/60 460 (500-1¼)				
LNAV MDA	1300/24	485 (500-½)	1300/50		485 (500-1)
CIRCLING	1300-1	485 (500-1)	1420-1¾ 605 (700-1¾)	1520-2¼ 705 (800-2¼)	1520-2½ 705 (800-2½)



EC-2, 26 DEC 2024 to 23 JAN 2025

EC-2, 26 DEC 2024 to 23 JAN 2025