

VORTAC FWA 117.8 Chan 125	APP CRS 054°	Rwy Idg 11981 TDZE 815 Apt Elev 815
---	------------------------	--

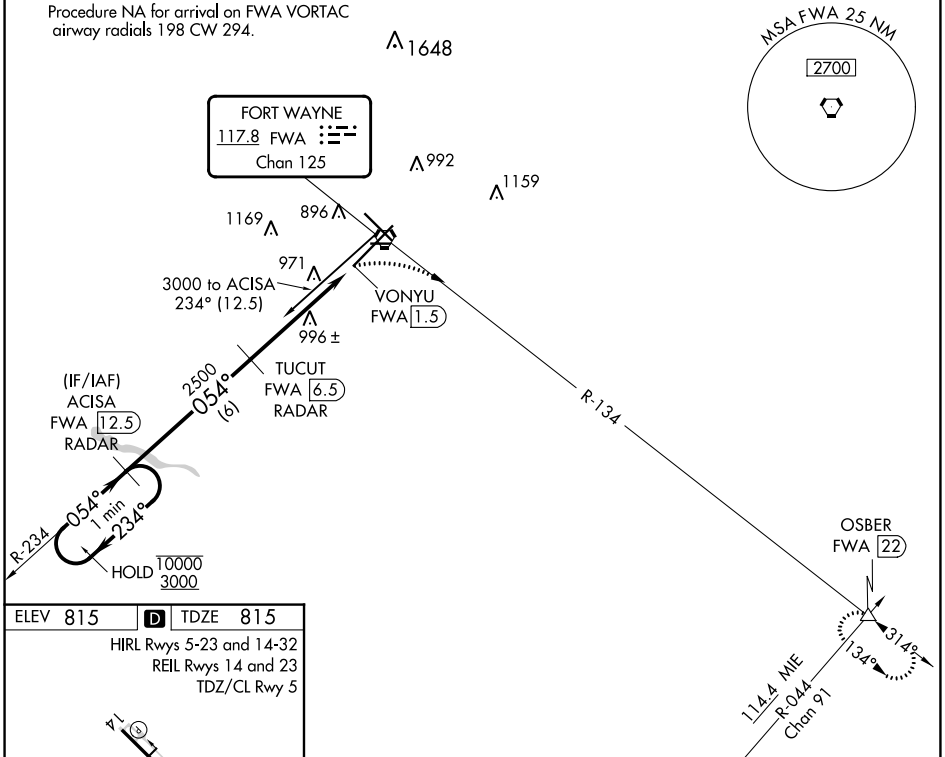
VOR or TACAN RWY 5

FORT WAYNE INTL (FWA)

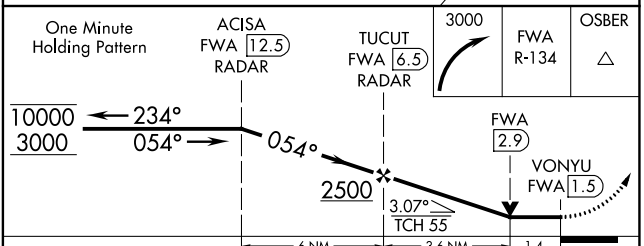
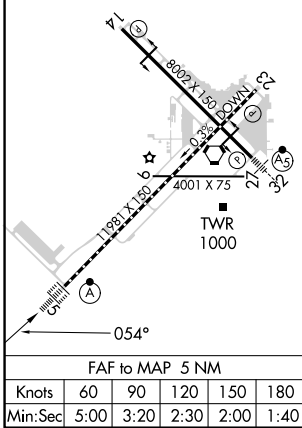
DME or RADAR required.		ALSF-2 	MISSED APPROACH: Climbing right turn to 3000 on FWA VORTAC R-134 to OSBER INT/FWA 22 DME and hold.	
For inop ALS, increase S-5 Cat C/D/E visibility to 1 3/8 SM. ASR				

ATIS 121.25 360.825	FORT WAYNE APP CON 127.2 284.6	FORT WAYNE TOWER 119.1 269.325	GND CON 121.9 348.6	CLNC DEL 124.75
-------------------------------	--	--	-------------------------------	---------------------------

Procedure NA for arrival on FWA VORTAC airway radials 198 CW 294.



ELEV 815	D	TDZE 815
HIRL Rwys 5-23 and 14-32 REIL Rwys 14 and 23 TDZ/CL Rwy 5		



CATEGORY	A	B	C	D	E
S-5	1320/24	505 (600-1/2)	1320/55	505 (600-1)	1320/60 505 (600-1 1/4)
C CIRCLING	1320-1	505 (600-1)	1360-1 1/2 545 (600-1 1/2)	1520-2 1/4 705 (800-2 1/4)	1520-2 1/2 705 (800-2 1/2)

EC-2, 26 DEC 2024 to 23 JAN 2025

EC-2, 26 DEC 2024 to 23 JAN 2025