

APP CRS	Rwy Idg	<b>3035</b>
<b>056°</b>	TDZE	<b>834</b>
	Apt Elev	<b>836</b>

# RNAV (GPS) RWY 5

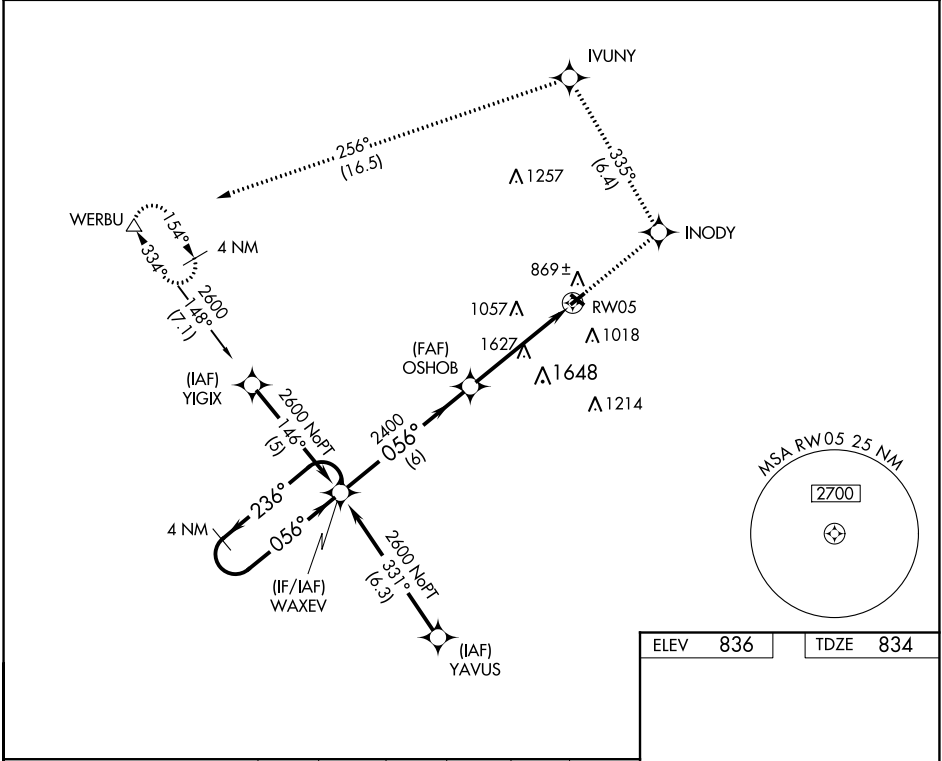
SMITH FLD (SMD)

RNP APCH.

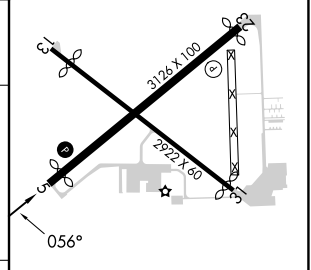
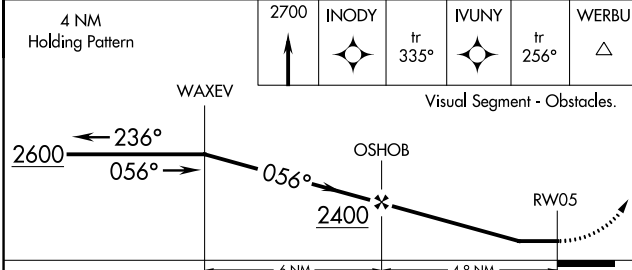
When local altimeter setting not received, use Fort Wayne Intl altimeter setting and increase all MDA 40 feet. Procedure NA at night. Rwy 5 helicopter visibility reduction below 1 SM NA.

MISSED APPROACH: Climb to 2700 direct INODY and on track 335° to IVUNY and on track 256° to WERBU and hold.

AWOS-3 <b>124.55</b>	FORT WAYNE APP CON <b>127.2 284.6</b>	UNICOM <b>122.8 (CTAF) 0</b>
-------------------------	--	---------------------------------



ELEV	<b>836</b>	TDZE	<b>834</b>
------	------------	------	------------



CATEGORY	A	B	C	D
LNVA MDA	1880-1¼ 1046 (1100-1¼)	1880-1½ 1046 (1100-1½)	1880-3 1046 (1100-3)	NA
CIRCLING	1880-1¼ 1044 (1100-1¼)	1880-1½ 1044 (1100-1½)	1940-3 1104 (1200-3)	NA

MIRL Rwy 5-23 and 13-31 0

EC-2, 26 DEC 2024 to 23 JAN 2025

EC-2, 26 DEC 2024 to 23 JAN 2025