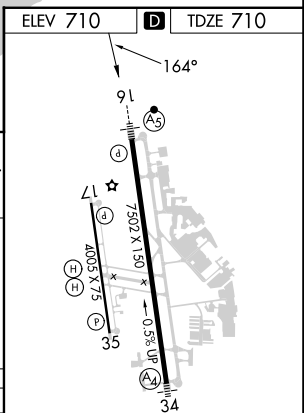
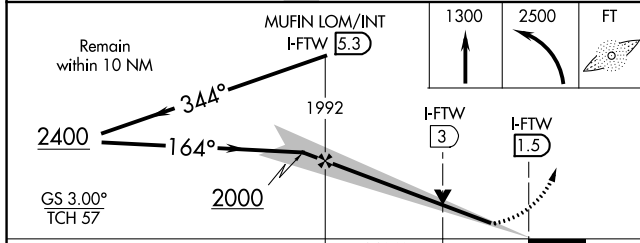
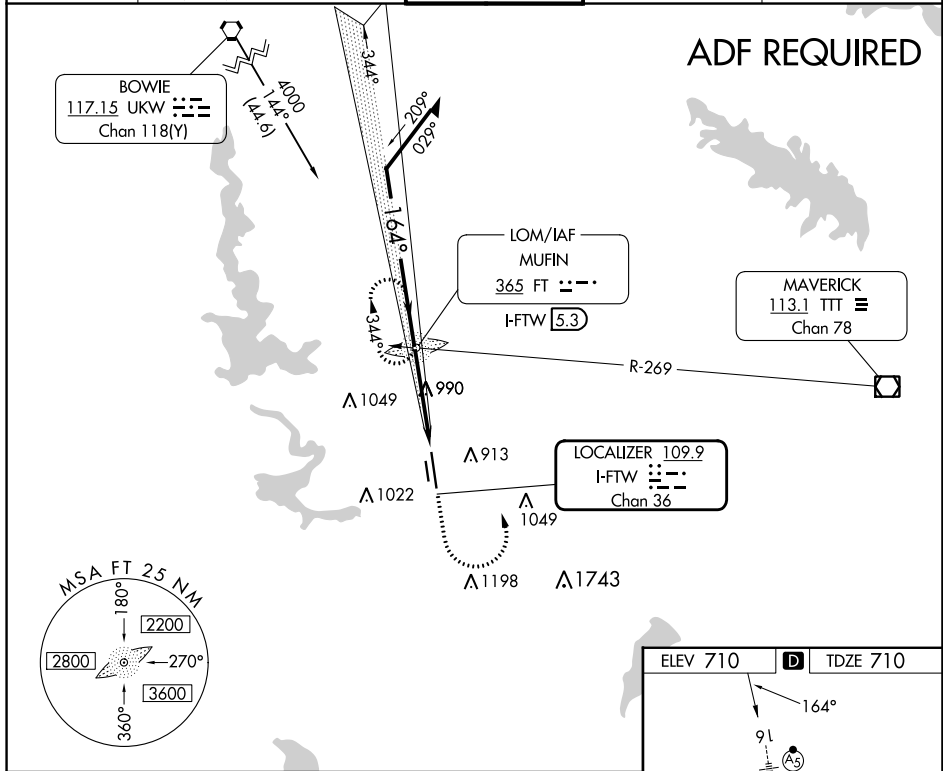


LOC I-FTW <b>109.9</b> Chan <b>36</b>	APP CRS <b>164°</b>	Rwy Idg <b>7502</b> TDZE <b>710</b> Apt Elev <b>710</b>
---	------------------------	---

**ILS or LOC RWY 16**  
FORT WORTH MEACHAM INTL (FTW)

<p><b>⚠</b> *RVR 1800 authorized with the use of FD or AP or HUD to DA.</p> <p><b>⚠</b> MALSR</p>	<p>MISSED APPROACH: Climb to 1300 then climbing left turn to 2500 direct FT LOM and hold, continue climb-in-hold to 2500.</p>
---	---

ATIS <b>120.7</b>	LONE STAR APP CON (North) <b>118.1 306.95</b> (South) <b>135.975 379.9</b>	MEACHAM TOWER <b>118.3 257.8</b>	GND CON <b>121.9</b>	CLNC DEL <b>124.65</b>
----------------------	--	-------------------------------------	-------------------------	---------------------------



CATEGORY	A	B	C	D
S- ILS 16*	910/24 200 (200-½)			
S- LOC 16	1240/24 530 (600-½)	1240/50 530 (600-1)	1240/60 530 (600-1¼)	
CIRCLING	1260-1 550 (600-1)	1280-1 570 (600-1)	1340-1¾ 630 (700-1¾)	1500-2½ 790 (800-2½)

HIRL Rwy 16-34					
MIRL Rwy 17-35					
FAF to MAP 3.8 NM					
Knots	60	90	120	150	180
Min:Sec	3:48	2:32	1:54	1:31	1:16

SC-2, 26 DEC 2024 to 23 JAN 2025

SC-2, 26 DEC 2024 to 23 JAN 2025