

RADAR and DME required.

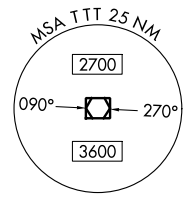
**TOP ALTITUDE:
ASSIGNED BY ATC**

LONE STAR DEP CON
 118.1 306.95 (NORTH)
 135.975 379.9 (SOUTH)
 ATIS
 120.7
 CLNC DEL
 124.65
 GND CON
 121.9
 MEACHAM TOWER
 118.3 257.8

(WORTH1.TTT) 24305
WORTH ONE DEPARTURE

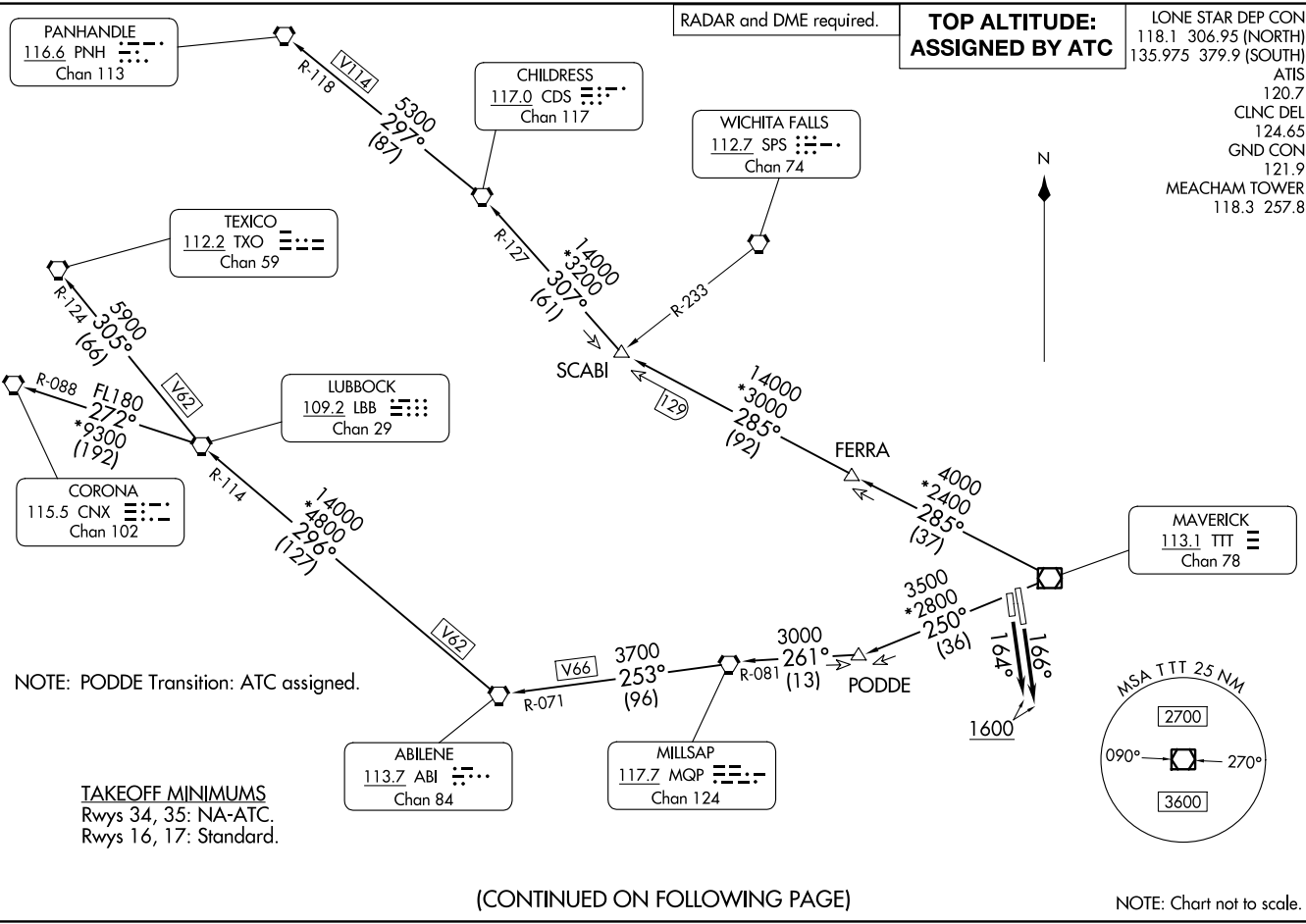
AL-159 (FAA)

FORT WORTH MEACHAM INTL (FTTW)
FORT WORTH, TEXAS



NOTE: Chart not to scale.

(CONTINUED ON FOLLOWING PAGE)



PANHANDLE
 116.6 PNH
 Chan 113

CHILDRESS
 117.0 CDS
 Chan 117

WICHITA FALLS
 112.7 SPS
 Chan 74

TEXICO
 112.2 TXO
 Chan 59

LUBBOCK
 109.2 LBB
 Chan 29

CORONA
 115.5 CNX
 Chan 102

MAVERICK
 113.1 TTT
 Chan 78

ABILENE
 113.7 ABI
 Chan 84

MILLSAP
 117.7 MQP
 Chan 124

NOTE: PODDE Transition: ATC assigned.

TAKEOFF MINIMUMS
 Rwy 34, 35: NA-ATC.
 Rwy 16, 17: Standard.

WORTH ONE DEPARTURE
(WORTH1.TTT) 251AN24

FORT WORTH MEACHAM INTL (FTTW)
FORT WORTH, TEXAS

WORTH ONE DEPARTURE



DEPARTURE ROUTE DESCRIPTION

TAKEOFF RUNWAY 16: Climb on heading 166° to 1600 before proceeding on course.

TAKEOFF RUNWAY 17: Climb on heading 164° to 1600 before proceeding on course.

When entering controlled airspace, fly assigned heading for RADAR vectors to appropriate route. Maintain ATC assigned altitude.

ABILENE TRANSITION (WORTH1.ABI): From over TTT VOR/DME on TTT R-250 to PODDE, then on MQP R-081 to MQP VORTAC, then on MQP R-253 and ABI R-071 to ABI VORTAC.

CHILDRESS TRANSITION (WORTH1.CDS): From over TTT VOR/DME on TTT R-285 to SCABI, then on CDS R-127 to CDS VORTAC.

CORONA TRANSITION (WORTH1.CNX): From over TTT VOR/DME on TTT R-250 to PODDE, then on MQP R-081 to MQP VORTAC, then on MQP R-253 and ABI R-071 to ABI VORTAC, then on ABI R-296 and LBB R-114 to LBB VORTAC, then on LBB R-272 and CNX R-088 to CNX VORTAC.

LUBBOCK TRANSITION (WORTH1.LBB): From over TTT VOR/DME on TTT R-250 to PODDE, then on MQP R-081 to MQP VORTAC, then on MQP R-253 and ABI R-071 to ABI VORTAC, then on ABI R-296 and LBB R-114 to LBB VORTAC.

PANHANDLE TRANSITION (WORTH1.PNH): From over TTT VOR/DME on TTT R-285 to SCABI, then on CDS R-127 to CDS VORTAC, then on CDS R-297 and PNH R-118 to PNH VORTAC.

PODDE TRANSITION (WORTH1.PODDE): From over TTT VOR/DME on TTT R-250 to PODDE.

TEXICO TRANSITION (WORTH1.TXO): From over TTT VOR/DME on TTT R-250 to PODDE, then on MQP R-081 to MQP VORTAC, then on MQP R-253 and ABI R-071 to ABI VORTAC, then on ABI R-296 and LBB R-114 to LBB VORTAC, then on LBB R-305 and TXO R-124 to TXO VORTAC.

SC-2, 26 DEC 2024 to 23 JAN 2025

SC-2, 26 DEC 2024 to 23 JAN 2025