

HI-ILS Y or LOC Y RWY 18

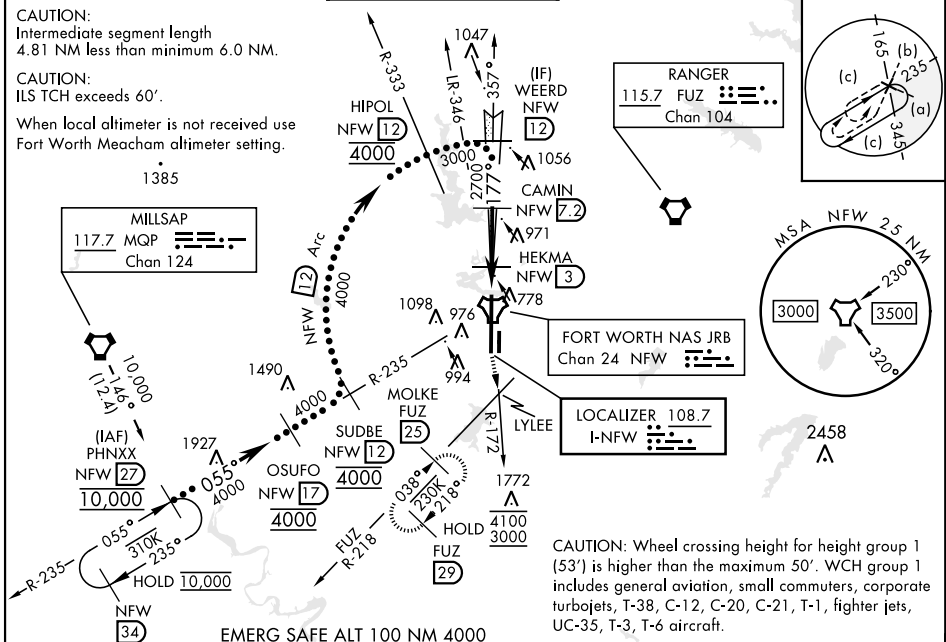
LOC I-NFW 108.7	APCH CRS 177°	Rwy Ldg 11,999 TDZE 636 Arpt Elev 650	[USN]	FORT WORTH NAS JRB (CARSWELL FLD) (KNFW)
---------------------------	-------------------------	---	-------	--

FUZ VORTAC or RADAR required.

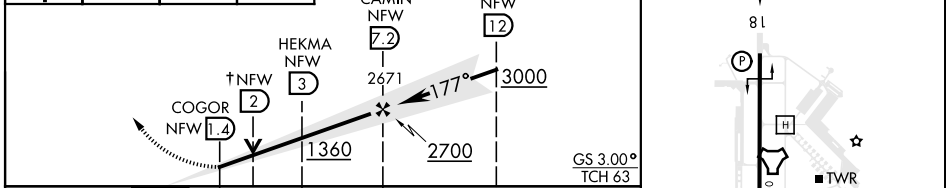
* Circling not authorized E of Rwy 18-36.

MISSED APPROACH: Climb to 3000 direct LYLEE to intercept FUZ VORTAC R-218 to MOLKE and hold.

ATIS* 351.675	LONE STAR APP CON 125.8 257.95	NAVY FORT WORTH TOWER* 120.95 269.325	GND CON 121.675 279.575	CLNC DEL 126.4 254.325	ASR/PAR
-------------------------	--	---	-----------------------------------	----------------------------------	---------



3000	LYLEE	FUZ R-218	MOLKE FUZ 25	↑ VDP NA when using FTW altimeter setting	ELEV 650	TDZE 636
------	-------	-----------	--------------	---	----------	----------



CATEGORY	C	D	E
S-ILS 18	836- $\frac{3}{4}$	200	(200- $\frac{3}{4}$)
S-LOC 18	1040-1 $\frac{1}{8}$	404	(400-1 $\frac{1}{8}$)
C CIRCLING*	1320-1 $\frac{3}{4}$ 670 (700-1 $\frac{3}{4}$)	1340-2 $\frac{1}{4}$ 690 (700-2 $\frac{1}{4}$)	1440-2 $\frac{3}{4}$ 790 (800-2 $\frac{3}{4}$)
FORT WORTH MEACHAM ALTIMETER			
S-ILS 18	856- $\frac{3}{4}$	220	(300- $\frac{3}{4}$)
S-LOC 18	1060-1 $\frac{1}{4}$	424	(500-1 $\frac{1}{4}$)
C CIRCLING*	1340-2 690 (700-2)	1360-2 $\frac{1}{4}$ 710 (800-2 $\frac{1}{4}$)	1460-2 $\frac{3}{4}$ 810 (900-2 $\frac{3}{4}$)

FAF to MAP 5.8 NM					
Knots	120	140	160	180	200
Min:Sec	2:54	2:29	2:11	1:56	1:44

HI-ILS Y or LOC Y RWY 18

SC-2, 26 DEC 2024 to 23 JAN 2025

SC-2, 26 DEC 2024 to 23 JAN 2025