

FORT WORTH, TEXAS

# ILS Z or LOC Z RWY 18

|                           |                         |  |
|---------------------------|-------------------------|--|
| LOC I-NFW<br><b>108.7</b> | APCH CRS<br><b>177°</b> | Rwy Idg <b>11,999</b><br>TDZE <b>636</b><br>Arpt Elev <b>650</b> |
|---------------------------|-------------------------|--|

[USN] FORT WORTH NAS JRB (CARSWELL FLD) (KNFW)

FUZ VORTAC or RADAR required

MISSED APPROACH: Climb to 3000 direct LYLEE to intercept FUZ VORTAC R-218 to MOLKE and hold.

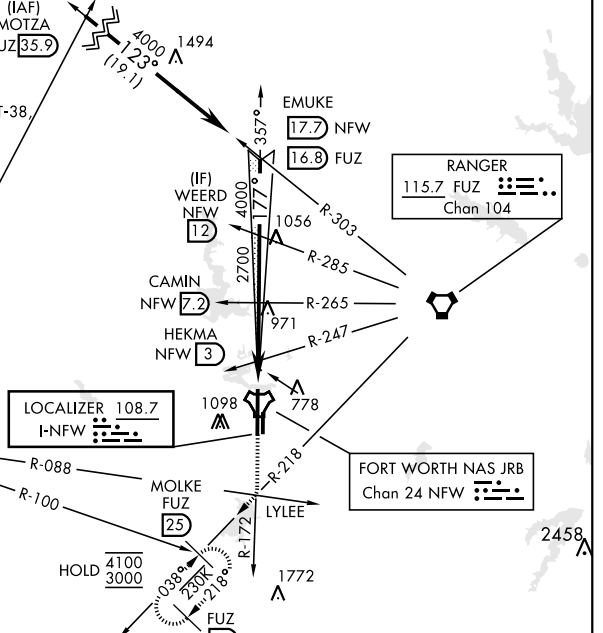
|                         |  |  |                                   |                                  |         |
|-------------------------|--|--|-----------------------------------|----------------------------------|---------|
| ATIS*<br><b>351.675</b> | LONE STAR APP CON<br><b>125.8 257.95</b> | NAVY FORT WORTH TOWER*<br><b>120.950 269.325</b> | GND CON<br><b>121.675 279.575</b> | CLNC DEL<br><b>126.4 254.325</b> | ASR/PAR |
|-------------------------|--|--|-----------------------------------|----------------------------------|---------|

CAUTION: ILS TCH exceeds 60'.

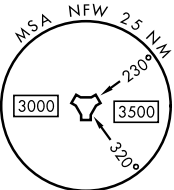
CAUTION: Wheel crossing height for height group 1 (53') is higher than the maximum 50'. Wheel crossing height group 1 includes general aviation, small commuters, corporate turboprops, T-38, C-12, C-20, C-21, T-1, fighter jets, UC-35, T-3, T-6 aircraft.  
1470

When local altimeter is not received, use Fort Worth Meacham altimeter setting.

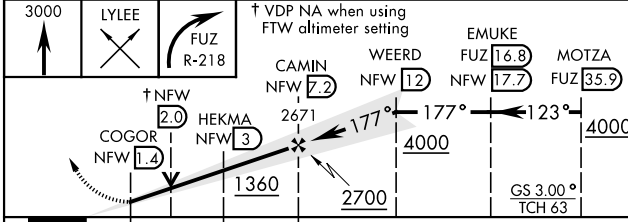
MILLSAP  
117.7 MQP  
Chan 124



RANGER  
115.7 FUZ  
Chan 104

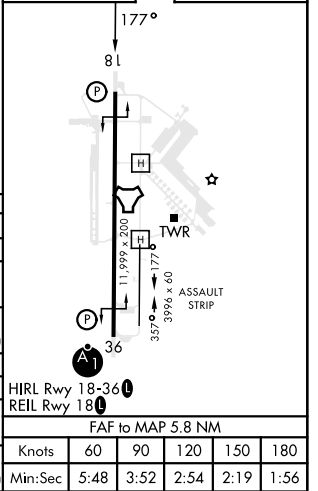


EMERG SAFE ALT 100 NM 4000



|          |          |
|----------|----------|
| ELEV 650 | TDZE 636 |
|----------|----------|

| CATEGORY                     | A                                | B                     | C  | D  | E  |
|------------------------------|----------------------------------|-----------------------|--|--|--|
| S-ILS 18                     | 836- <sup>3</sup> / <sub>4</sub> |                       | 200  | (200- <sup>3</sup> / <sub>4</sub> )  |  |
| S-LOC 18                     | 1040-1                           | 404 (400-1)           | 1040-1 <sup>1</sup> / <sub>8</sub>   | 404  | (400-1 <sup>1</sup> / <sub>8</sub> )   |
| <b>C</b> CIRCLING*           | 1220-1<br>570 (600-1)            | 1320-1<br>670 (700-1) | 1320-1 <sup>3</sup> / <sub>4</sub><br>670 (700-1 <sup>3</sup> / <sub>4</sub> ) | 1340-2 <sup>1</sup> / <sub>4</sub><br>690 (700-2 <sup>1</sup> / <sub>4</sub> ) | 1440-2 <sup>3</sup> / <sub>4</sub><br>790 (800-2 <sup>3</sup> / <sub>4</sub> ) |
| FORT WORTH MEACHAM ALTIMETER |                                  |                       |  |  |  |
| S-ILS 18                     | 856- <sup>3</sup> / <sub>4</sub> |                       | 220  | (300- <sup>3</sup> / <sub>4</sub> )  |  |
| S-LOC 18                     | 1060-1                           | 424 (500-1)           | 1060-1 <sup>1</sup> / <sub>4</sub>   | 424  | (500-1 <sup>1</sup> / <sub>4</sub> )   |
| <b>C</b> CIRCLING*           | 1240-1<br>590 (600-1)            | 1340-1<br>690 (700-1) | 1340-2<br>690 (700-2)  | 1360-2 <sup>1</sup> / <sub>4</sub><br>710 (800-2 <sup>1</sup> / <sub>4</sub> ) | 1460-2 <sup>3</sup> / <sub>4</sub><br>810 (900-2 <sup>3</sup> / <sub>4</sub> ) |



FORT WORTH, TEXAS 32°46'N-97°26'W FORT WORTH NAS JRB (CARSWELL FLD) (KNFW)

Orig 18MAY23

# ILS Z or LOC Z RWY 18

SC-2, 26 DEC 2024 to 23 JAN 2025

SC-2, 26 DEC 2024 to 23 JAN 2025