

FORT WORTH, TEXAS

# TACAN Z RWY 18

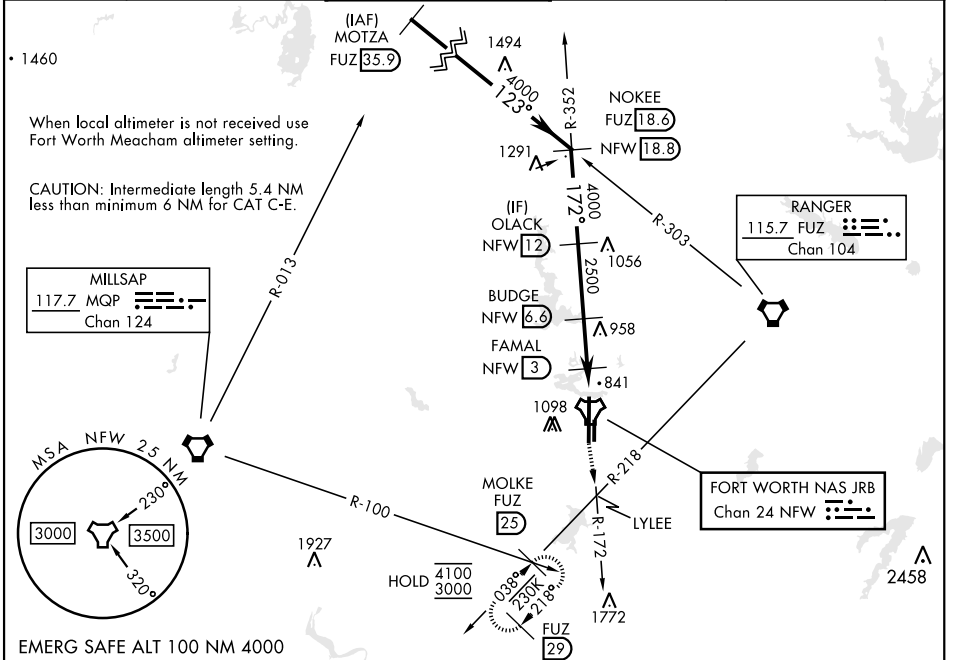
TACAN NFW Chan <b>24</b>	APCH CRS <b>172°</b>	Rwy Idg <b>11,999</b> TDZE Arprt Elev <b>636</b> <b>650</b>
-----------------------------	-------------------------	----------------------------------------------------------------------

[USN] FORT WORTH NAS JRB (CARSWELL FLD) (KNFW)

FUZ VORTAC or RADAR required.  
\* Circling not authorized E of Rwy 18-36.

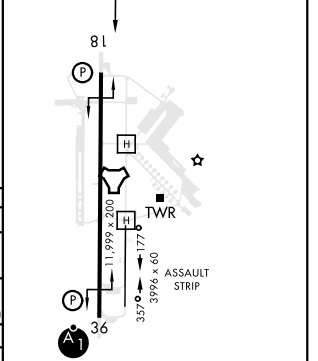
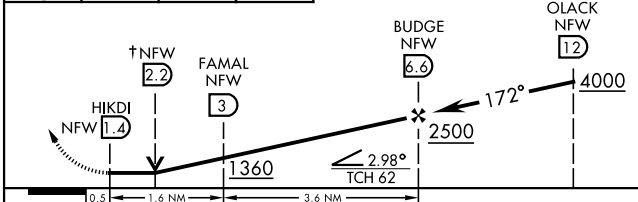
MISSED APPROACH: Climb to 3000 direct LYLEE to intercept FUZ VORTAC R-218 to MOLKE and hold.

ATIS* <b>351.675</b>	LONE STAR APP CON <b>125.8 257.95</b>	NAVY FORT WORTH TOWER* <b>120.950 269.325</b>	GND CON <b>121.675 279.575</b>	CLNC DEL <b>126.4 254.325</b>	ASR
-------------------------	------------------------------------------	--------------------------------------------------	-----------------------------------	----------------------------------	-----



3000	LYLEE	FUZ R-218	MOLKE FUZ 25	† VDP NA when using FTW altimeter setting
------	-------	-----------	--------------	-------------------------------------------

ELEV 650	TDZE 636
----------	----------



CATEGORY	A	B	C	D	E
S-18	1100-1 464 (500-1)		1100-1 $\frac{3}{8}$ 464 (500-1 $\frac{3}{8}$ )		
CIRCLING*	1220-1 570 (600-1)	1320-1 670 (700-1)	1320-1 $\frac{3}{4}$ 670 (700-1 $\frac{3}{4}$ )	1340-2 $\frac{1}{4}$ 690 (700-2 $\frac{1}{4}$ )	1440-2 $\frac{3}{4}$ 790 (800-2 $\frac{3}{4}$ )
FORT WORTH MEACHAM ALTIMETER					
S-18	1120-1 484 (500-1)		1120-1 $\frac{3}{8}$ 484 (500-1 $\frac{3}{8}$ )		
CIRCLING*	1240-1 590 (600-1)	1340-1 690 (700-1)	1340-2 690 (700-2)	1360-2 $\frac{1}{4}$ 710 (800-2 $\frac{1}{4}$ )	1460-2 $\frac{3}{4}$ 810 (900-2 $\frac{3}{4}$ )

FORT WORTH, TEXAS 32°46'N-97°26'W FORT WORTH NAS JRB (CARSWELL FLD) (KNFW)

Orig 18MAY23

# TACAN Z RWY 18

SC-2, 26 DEC 2024 to 23 JAN 2025

SC-2, 26 DEC 2024 to 23 JAN 2025