

(CRIED1.CRIED) 24193

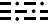
SCHOLES INTL AT GALVESTON (GLS)

CRIED ONE DEPARTURE

AL-164 (FAA)

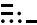
GALVESTON, TEXAS

ASOS
 123.95
 CLNC DEL (When twr closed)
 135.35
 GND CON
 118.625
 GALVESTON TOWER ★
 120.575 (CTAF)
 HOUSTON DEP CON
 134.45 284.0

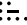
CEDAR CREEK
 114.8 CQY 
 Chan 95

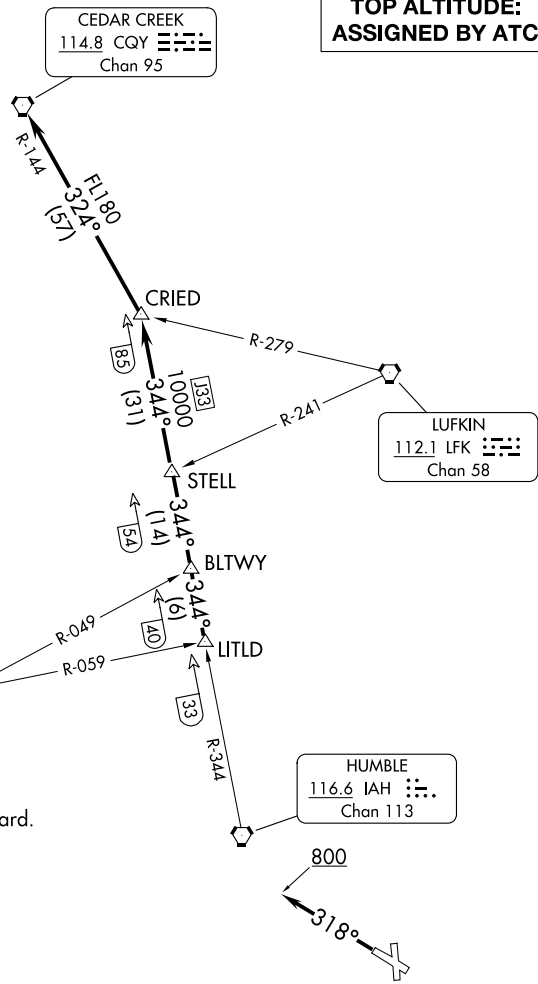
**TOP ALTITUDE:
 ASSIGNED BY ATC**

NOTE: RADAR required.

NAVASOTA
 115.9 TNV 
 Chan 106

TAKEOFF MINIMUMS
 Rwy's 14, 18, 32, 36: Standard.

HUMBLE
 116.6 IAH 
 Chan 113



NOTE: Chart not to scale.

DEPARTURE ROUTE DESCRIPTION

TAKEOFF RUNWAYS 14, 18, 36: When entering controlled airspace, climb on assigned heading for RADAR vectors to LITLD INT. Maintain ATC assigned altitude. Expect filed altitude 10 minutes after departure, thence

TAKEOFF RUNWAY 32: Climb on heading 318° to 800 before turning. When entering controlled airspace, climb on assigned heading for RADAR vectors to LITLD INT. Maintain ATC assigned altitude. Expect filed altitude 10 minutes after departure, thence

. . . . on IAH R-344 to STELL INT, then on IAH R-344 to CRIED INT, then left turn on CQY R-144 to CQY VORTAC.

CRIED ONE DEPARTURE

(CRIED1.CRIED) 07OCT21

GALVESTON, TEXAS

SCHOLES INTL AT GALVESTON (GLS)

SC-5, 26 DEC 2024 to 23 JAN 2025

SC-5, 26 DEC 2024 to 23 JAN 2025