

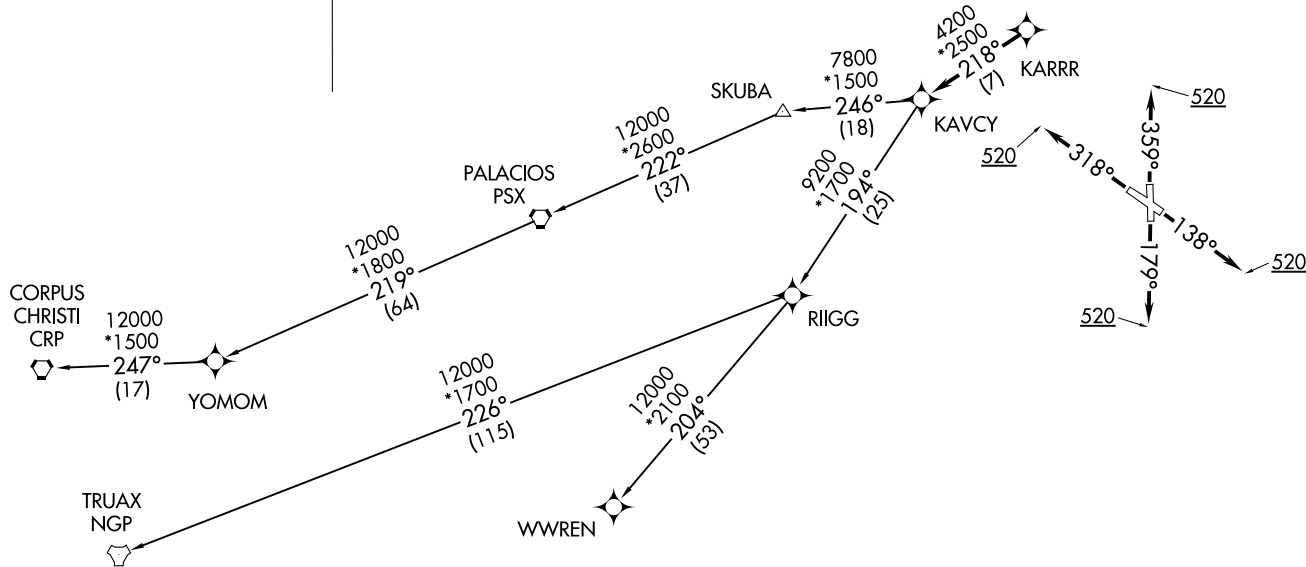
RNAV-1 DME/DME/IRU or GPS.  
RADAR required.

**TOP ALTITUDE:  
ASSIGNED BY ATC**

ASOS  
123.95  
CLNC DEL (When twr closed)  
135.35  
GND CON  
118.625  
GALVESTON TOWER ★  
120.575 (CTAF)  
HOUSTON DEP CON  
134.45 284.0

TAKEOFF MINIMUMS

Rwys 14, 18, 32, 36: Standard with minimum climb of 500' per NM to 520.



(NARRATIVE ON FOLLOWING PAGE)

NOTE: Chart not to scale.

KARRR SEVEN DEPARTURE (RNAV)  
(KARRR7 .KARRR) 29DEC22

GALVESTON, TEXAS  
SCHOLES INTL AT GALVESTON (G1LS)

(KARRR7 .KARRR) 22363  
KARRR SEVEN DEPARTURE (RNAV) AI-164 (FAA)

GALVESTON, TEXAS  
SCHOLES INTL AT GALVESTON (G1LS)



DEPARTURE ROUTE DESCRIPTION

TAKEOFF RUNWAY 14: Climb on heading 138° to 520, for RADAR vectors to KARRR, thence. . . .

TAKEOFF RUNWAY 18: Climb on heading 179° to 520, for RADAR vectors to KARRR, thence. . . .

TAKEOFF RUNWAY 32: Climb on heading 318° to 520, for RADAR vectors to KARRR, thence. . . .

TAKEOFF RUNWAY 36: Climb on heading 359° to 520, for RADAR vectors to KARRR, thence. . . .

. . . .on track 218° to KAVCY, then on (transition). Maintain ATC assigned altitude. Expect filed altitude 10 minutes after departure.

CORPUS CHRISTI TRANSITION (KARRR7.CRP)

PALACIOS TRANSITION (KARRR7.PSX)

TRUAX TRANSITION (KARRR7.NGP)

WWREN TRANSITION (KARRR7.WWREN)

YOMOM TRANSITION (KARRR7.YOMOM)

SC-5, 26 DEC 2024 to 23 JAN 2025

SC-5, 26 DEC 2024 to 23 JAN 2025