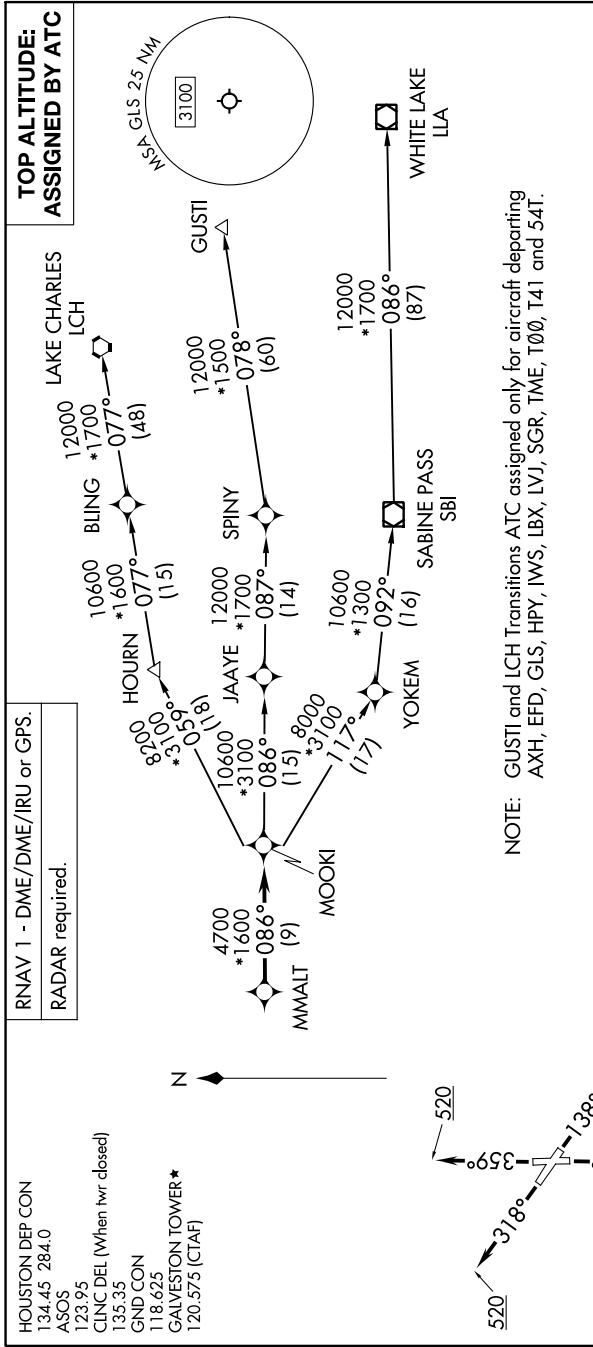


# MMALT SEVEN DEPARTURE (RNAV)

SC-5, 26 DEC 2024 to 23 JAN 2025



RNAV 1 - DME/DME/IRU or GPS.  
RADAR required.

HOUSTON DEP CON  
134.45 284.0  
ASOS  
123.95  
CLNC DEL (When twr closed)  
135.35  
GND CON  
118.625  
GALVESTON TOWER\*  
120.575 (CTAF)

# MMALT SEVEN DEPARTURE (RNAV)

(MMALT7.MMALT) 30NOV23

**DEPARTURE ROUTE DESCRIPTION**

**TAKEOFF RUNWAY 14:** Climb on heading 138° to 520, for RADAR vectors to MMALT, thence. . . .

**TAKEOFF RUNWAY 18:** Climb on heading 179° to 520, for RADAR vectors to MMALT, thence. . . .

**TAKEOFF RUNWAY 32:** Climb on heading 318° to 520, for RADAR vectors to MMALT, thence. . . .

**TAKEOFF RUNWAY 36:** Climb on heading 359° to 520, for RADAR vectors to MMALT, thence. . . .

. . . on track 086° to MOOKI, then on (transition). Maintain ATC assigned altitude.  
Expect filed altitude 10 minutes after departure.

**GUSTI TRANSITION (MMALT7.GUSTI)**  
**LAKE CHARLES TRANSITION (MMALT7.LCH)**  
**WHITE LAKE TRANSITION (MMALT7.LLA)**



**TAKEOFF MINIMUMS**  
Rwys 14, 18, 32, 36: Standard with minimum climb of 500'/NM to 520.

NOTE: Chart not to scale.

SC-5, 26 DEC 2024 to 23 JAN 2025