

WAAS CH <b>40101</b> <b>W32A</b>	APP CRS <b>318°</b>	Rwy Idg TDZE Apt Elev	<b>6000</b> <b>5</b> <b>6</b>
--	------------------------	-----------------------------	-------------------------------------

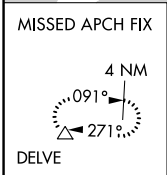
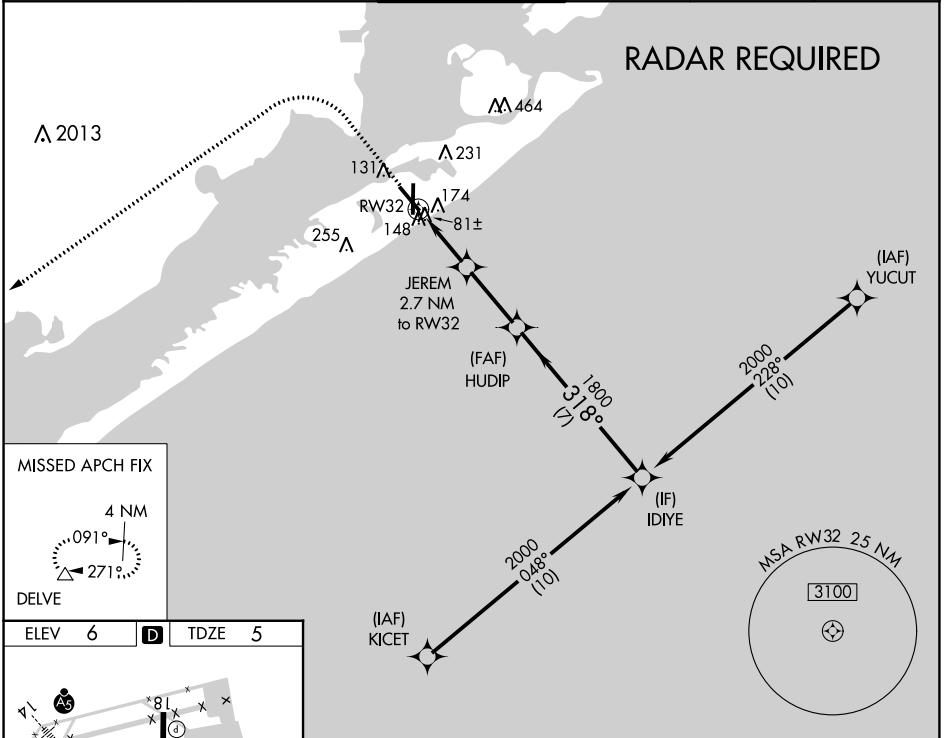
# RNAV (GPS) RWY 32

SCHOLES INTL AT GALVESTON (GLS)

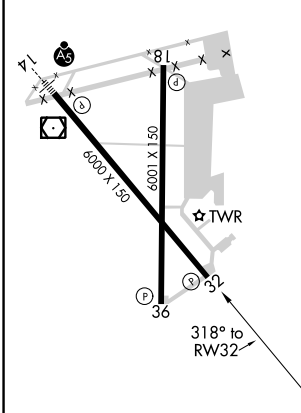
**⚠** Circling NA east of Rwy 18 and northeast of Rwy 32. DME/DME RNP-0.3 NA. Helicopter visibility reduction below 3/4 SM NA. VDP NA with William P Hobby altimeter setting. When local altimeter setting not received, use William P Hobby altimeter setting; increase all MDA 80 feet. Increase LP Cat C/D/E visibility 1/8 SM, increase LNAV Cat C/D/E visibility 1/8 SM and increase Circling Cat C/D/E visibility 1/4 SM.

**MISSED APPROACH:** Climb to 800 then climbing left turn to 3000 direct DELVE and hold.

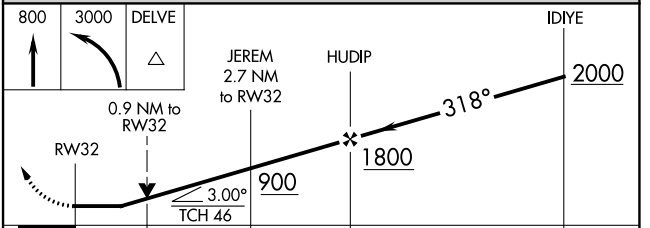
ASOS <b>123.95</b>	HOUSTON APP CON <b>134.45 284.0</b>	<b>GALVESTON TOWER *</b> <b>120.575 (CTAF) 0</b>	GND CON <b>118.625</b>	CLNC DEL <b>135.35</b> <small>(When twr closed)</small>	UNICOM <b>123.05</b>
-----------------------	--	---	---------------------------	---	-------------------------



ELEV 6	<b>D</b>	TDZE 5
--------	----------	--------



REIL Rwy 18, 32 and 36  
MIRL Rwy 18-36  
HIRL Rwy 14-32



800	3000	DELVE	IDIYE
↑	↶	△	
RW32		JEREM 2.7 NM to RW32	HUDIP
0.9 NM to RW32			2000
3.00° TCH 46			
0.9 NM		1.8 NM	2.8 NM
CATEGORY		A	B
LP MDA		340-1 335 (400-1)	
LNAV MDA		440-1 435 (500-1)	
CIRCLING		500-1 494 (500-1)	520-1 514 (600-1)
		620-1 3/4 614 (700-1 3/4)	620-2 614 (700-2)
		620-2 1/4 614 (700-2 1/4)	

SC-5, 26 DEC 2024 to 23 JAN 2025

SC-5, 26 DEC 2024 to 23 JAN 2025