

WAAS CH <b>48831</b> W36A	APP CRS <b>359°</b>	Rwy Idg TDZE Apt Elev	<b>6001</b> <b>5</b> <b>6</b>
---------------------------------	------------------------	-----------------------------	-------------------------------------

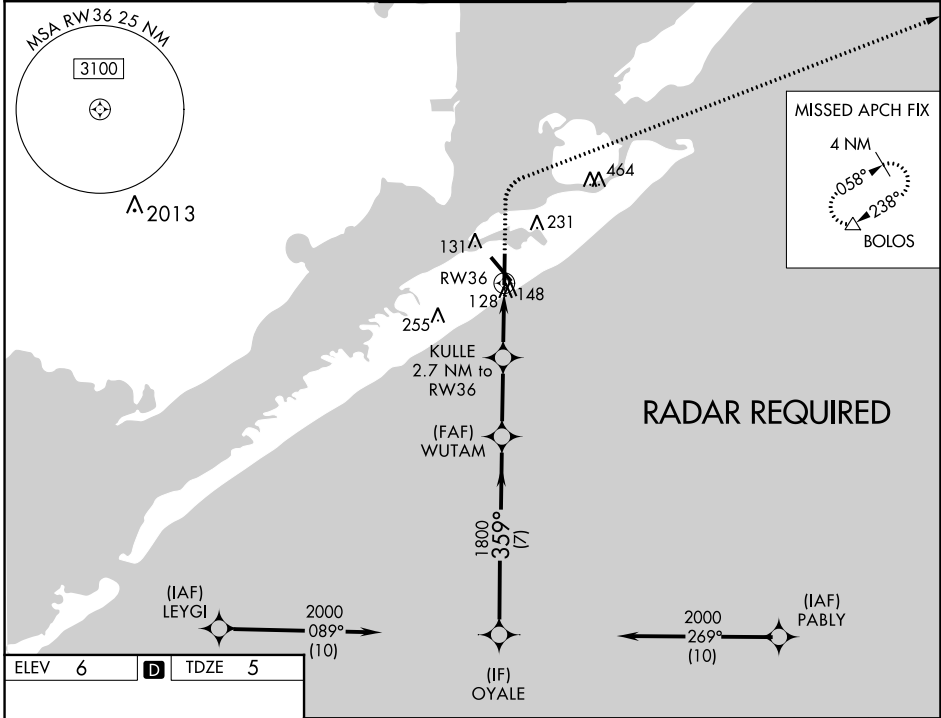
# RNAV (GPS) RWY 36

SCHOLES INTL AT GALVESTON (GLS)

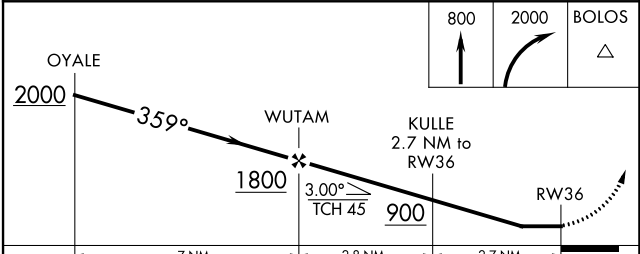
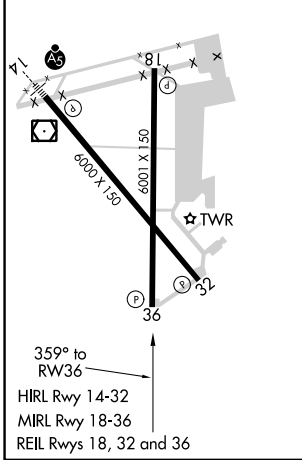
**⚠** When VGSI inop, Straight-in/Circling Rwy 36 procedure NA at night. Circling NA east of Rwy 18 and northeast of Rwy 32. DME/DME RNP-0.3 NA. Helicopter visibility reduction below 1 SM NA. When local altimeter setting not received, use William P Hobby altimeter setting; increase all MDA 80 feet. Increase LP Cat C/D/E visibility  $\frac{1}{8}$  SM, LNAV Cat C/D/E visibility  $\frac{1}{8}$  SM and Circling Cat C/D/E visibility  $\frac{1}{4}$  SM.

**MISSED APPROACH:**  
Climb to 800 then climbing right turn to 2000 direct BOLOS and hold.

ASOS <b>123.95</b>	HOUSTON APP CON <b>134.45 284.0</b>	GALVESTON TOWER * <b>120.575 (CTAF) 0</b>	GND CON <b>118.625</b>	CLNC DEL <b>135.35</b> (When twr closed)	UNICOM <b>123.05</b>
-----------------------	--	--	---------------------------	--	-------------------------



ELEV 6	<b>D</b>	TDZE 5
--------	----------	--------



CATEGORY		A	B	C	D	E
LP	MDA	440-1	435 (500-1)	440-1 $\frac{1}{4}$	435 (500-1 $\frac{1}{4}$ )	
LNAV	MDA	460-1	455 (500-1)	460-1 $\frac{3}{8}$	455 (500-1 $\frac{3}{8}$ )	
CIRCLING		500-1	520-1	620-1 $\frac{3}{4}$	620-2	620-2 $\frac{1}{4}$
		494 (500-1)	514 (600-1)	614 (700-1 $\frac{3}{4}$ )	614 (700-2)	614 (700-2 $\frac{1}{4}$ )