

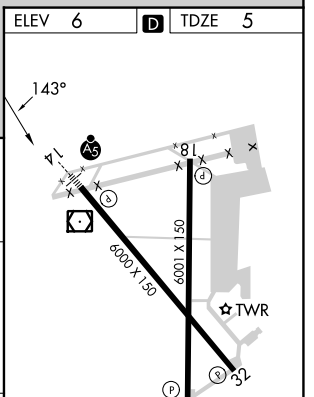
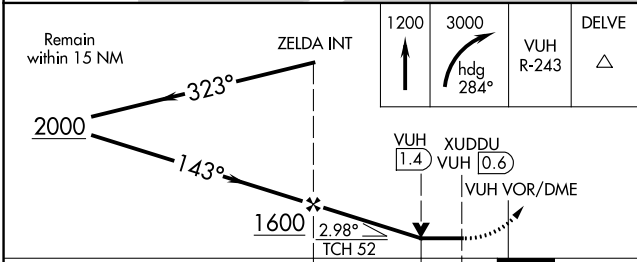
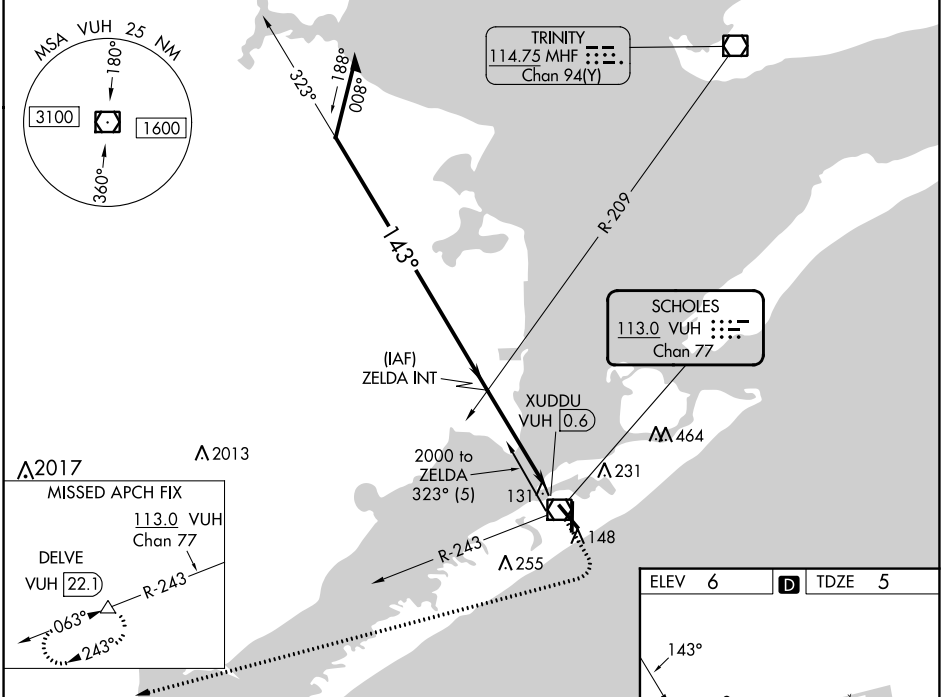
VOR/DME VUH <b>113.0</b> Chan 77	APP CRS <b>143°</b>	Rwy Idg TDZE Apt Elev	<b>6000</b> <b>5</b> <b>6</b>
--	------------------------	-----------------------------	-------------------------------------

# VOR RWY 14

SCHOLES INTL AT GALVESTON (GLS)

DME and RADAR required.		MALSR 	MISSED APPROACH: Climb to 1200 then climbing right turn to 3000 on heading 284° and VUH VOR/DME R-243 to DELVE/22.1 DME and hold.	
NA Circling NA east of Rwy 18 and northeast of Rwy 32.				

ASOS <b>123.95</b>	HOUSTON APP CON <b>134.45 284.0</b>	<b>GALVESTON TOWER *</b> <b>120.575</b> (CTAF) <b>0</b>	GND CON <b>118.625</b>	CLNC DEL <b>135.35</b> (When twr closed)	UNICOM <b>123.05</b>
-----------------------	--	--	---------------------------	--	-------------------------



CATEGORY	A	B	C	D	E
S-14	460-1/2	455 (500-1/2)	460-7/8	455 (500-7/8)	
CIRCLING	500-1 494 (500-1)	520-1 514 (600-1)	620-1 3/4 614 (700-1 3/4)	620-2 614 (700-2)	620-2 1/4 614 (700-2 1/4)

REIL Rwys 18, 32, and 36  
MIRL Rwy 18-36  
HIRL Rwy 14-32

SC-5, 26 DEC 2024 to 23 JAN 2025

SC-5, 26 DEC 2024 to 23 JAN 2025