

(CONTINUED ON FOLLOWING PAGE)

CHICAGO APP CON
119.0 292.125
D-ATIS
135.4 282.225

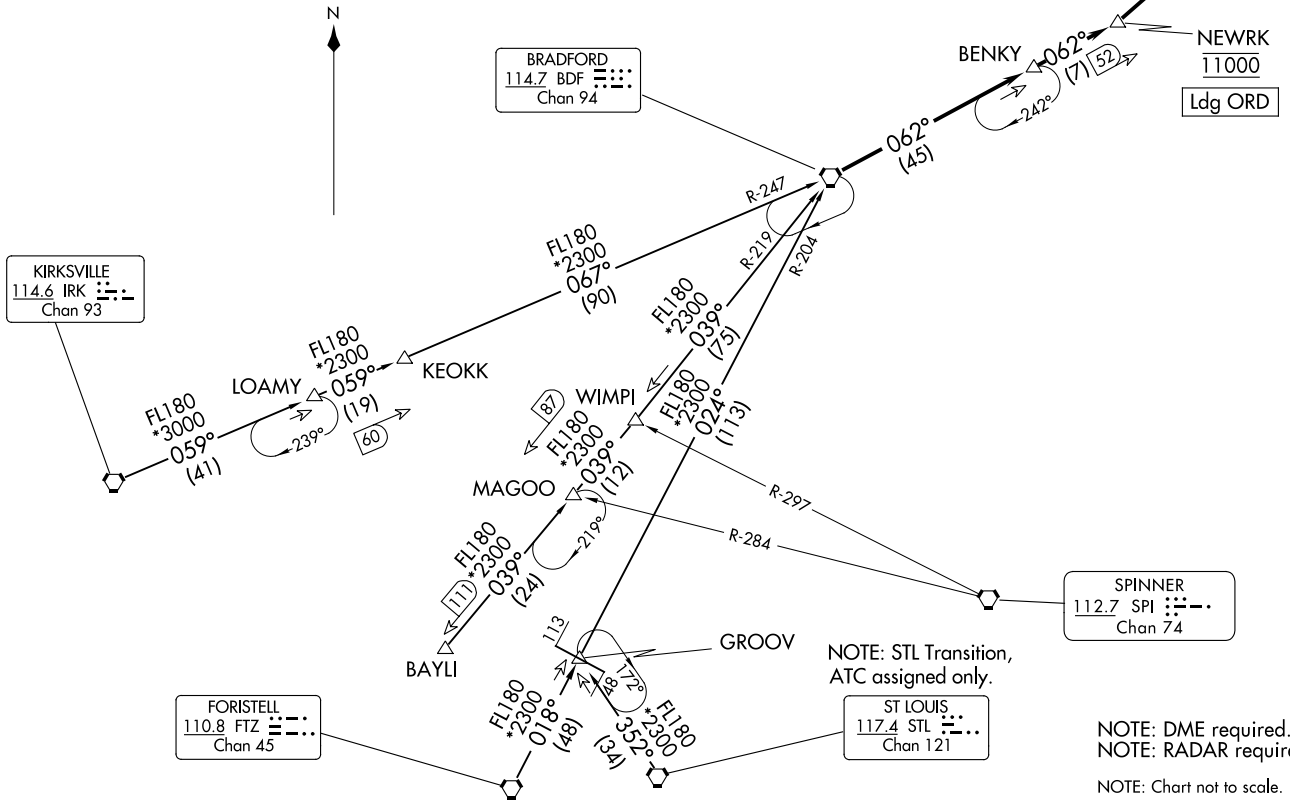
BRADFORD NINE ARRIVAL
(BDF.BDF9) 26DEC24

BRADFORD NINE ARRIVAL
(BDF.BDF9) 24361

AL-166 (FAA)

CHICAGO O'HARE INTL (ORD)
CHICAGO, ILLINOIS

CHICAGO, ILLINOIS
CHICAGO O'HARE INTL (ORD)



NOTE: DME required.
NOTE: RADAR required.
NOTE: Chart not to scale.

ARRIVAL DESCRIPTION

BAYLI TRANSITION (BAYLI.BDF9): From over BAYLI on BDF R-219 to BDF VORTAC.

Thence....

FORISTELL TRANSITION (FTZ.BDF9): From over FTZ VORTAC on FTZ R-018 to GROOV, then on BDF R-204 to BDF VORTAC. Thence....

KIRKSVILLE TRANSITION (IRK.BDF9): From over IRK VORTAC on IRK R-059 and BDF R-247 to BDF VORTAC. Thence....

ST LOUIS TRANSITION (STL.BDF9): From over STL VORTAC on STL R-352 to GROOV, then on BDF R-204 to BDF VORTAC. Thence....

....from over BDF VORTAC on BDF R-062 to cross NEWRK at 11000, then on heading 050°. Expect RADAR vectors to final approach course.

EC-3, 26 DEC 2024 to 23 JAN 2025

EC-3, 26 DEC 2024 to 23 JAN 2025