

LOC/DME I-MED <b>111.1</b> Chan <b>48</b>	APP CRS <b>093°</b>	Rwy Idg <b>12246</b> TDZE <b>672</b> Apt Elev <b>680</b>
---	------------------------	--

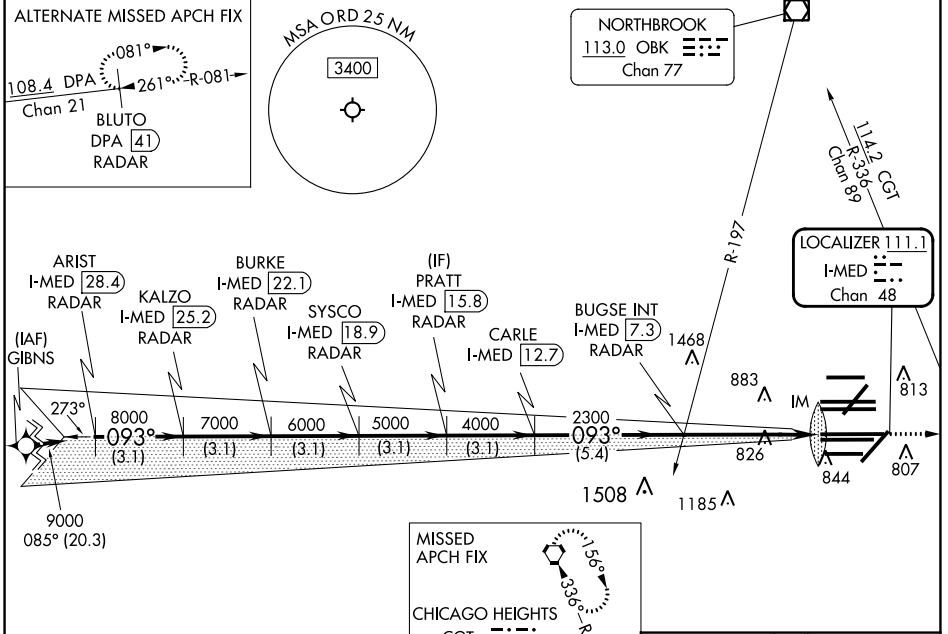
# ILS RWY 10L (SA CAT I)

CHICAGO O'HARE INTL (ORD)

From GIBNS: RNAV-1 GPS required.  
 RNAV 1-GPS or RADAR required for procedure entry. DME or RADAR required.  
 Simultaneous approach authorized. Requires specific OPSPEC, MSPEC, or LOA approval and use of HUD to DH.

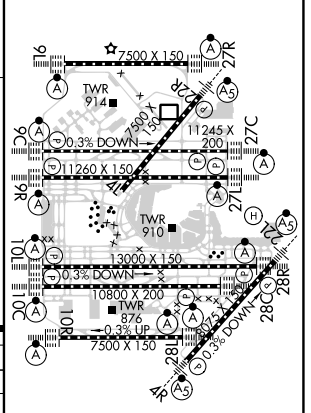
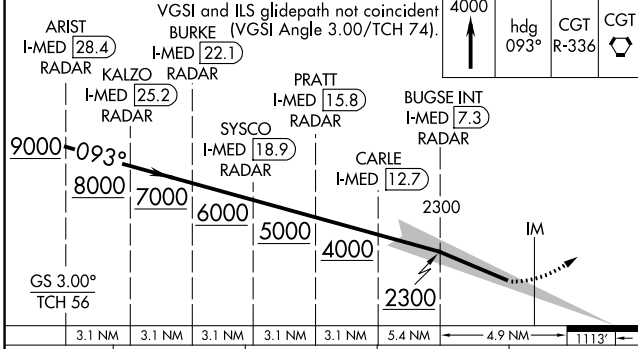
ALSF-2  
 MISSED APPROACH: Climb to 4000 on heading 093° and CGT VORTAC R-336 to CGT VORTAC and hold.

D-ATIS <b>135.4</b> <b>282.225</b>	CHICAGO APP CON <b>119.0 292.125</b>	O'HARE TOWER <b>132.7 348.0</b>	GND CON (TWR CENTER) <b>124.125</b> (TWR NORTH) <b>118.05</b> (TWR SOUTH) <b>226.675</b> (ALL TWRs)	(TWR CENTER) (LOBND) <b>121.75</b> (IBND) <b>121.9</b>	CLNC DEL <b>121.6</b>	CPDLC
--	---	------------------------------------	--	---	--------------------------	-------



MISSED APCH FIX  
 CHICAGO HEIGHTS CGT 114.2 Chan 89

ELEV 680	TDZE 672
----------	----------



CATEGORY	A	B	C	D
S-ILS 10L	RA 162/14		150 DA 822	
<b>SA CATEGORY I ILS - SPECIAL AIRCREW &amp; AIRCRAFT CERTIFICATION REQUIRED</b>				

HIRL all Rwys  
 TDZ/CL all Rwys except 4L

EC-3, 26 DEC 2024 to 23 JAN 2025

EC-3, 26 DEC 2024 to 23 JAN 2025