

| | | |
|--|------------------------|--|
| LOC/DME I-UYJ 111.9 Chan 56 | APP CRS 273° | Rwy ldg 11245 TDZE 653 Apt Elev 680 |
|--|------------------------|--|

ILS RWY 27C (SA CAT I)

CHICAGO O'HARE INTL (ORD)

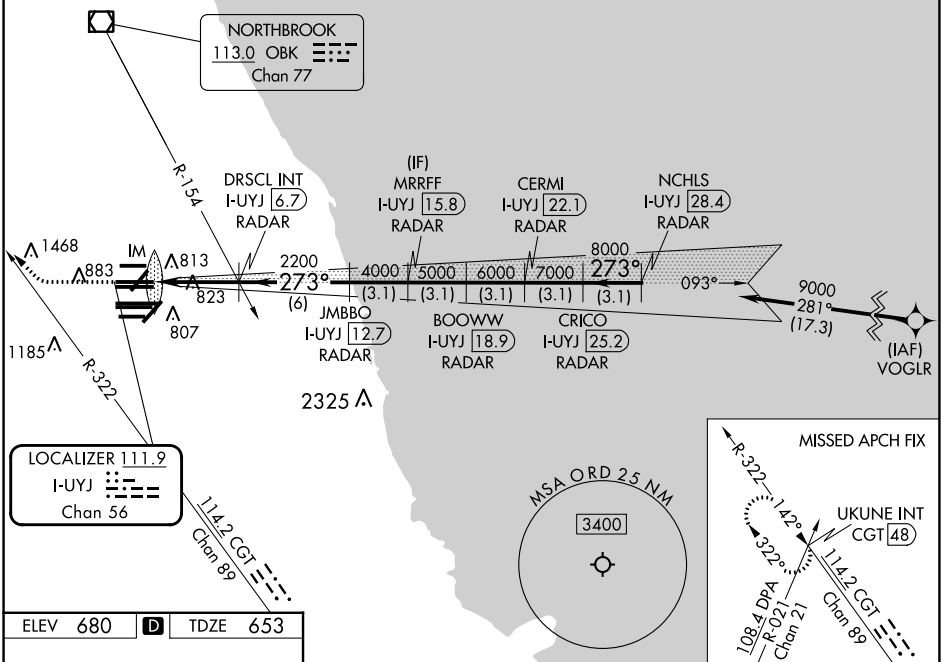
From VOGLR: RNAV 1-GPS required. Aircraft not GPS equipped - RADAR required for procedure entry, DME or RADAR required.

Simultaneous approach authorized. Requires specific OPSPEC, MSPEC, or LOA approval.

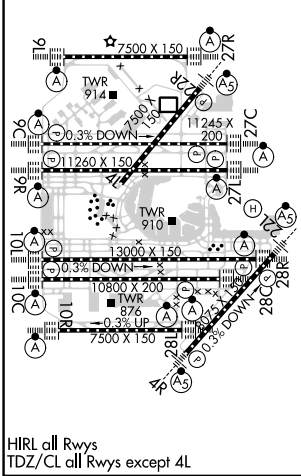
ALSF-2

MISSED APPROACH: Climb to 1100 then climbing right turn to 4000 on heading 290° and CGT R-322 to UKUNE INT/CGT 48 DME and hold.

| | | | | | | |
|--|---|-------------------------------------|---|--|--------------------------|-------|
| D-ATIS 135.4 282.225 | CHICAGO APP CON 119.0 292.125 | O'HARE TOWER 121.15 348.0 | GND CON (TWR NORTH) 124.125 (TWR SOUTH) 118.05 (ALL TWRS) 226.675 | (TWR CENTER) (OBND) 121.75 (IBND) 121.9 | CLNC DEL 121.6 | CPDLC |
|--|---|-------------------------------------|---|--|--------------------------|-------|



| | | |
|----------|----------|----------|
| ELEV 680 | D | TDZE 653 |
|----------|----------|----------|



HIRL all Rwys
TDZ/CL all Rwys except 4L

| | | | | | |
|-----------|-----------|----------------------|------------------|---|------------------|
| 1100 | 4000 | CGT R-322 | UKUNE INT | VGSI and ILS glidepath not coincident (VGSI Angle 3.00/TCH 75). | NCHLS I-UYJ 28.4 |
| ↑ | hdg 290° | DRISCL INT I-UYJ 6.7 | MRRFF I-UYJ 15.8 | CERMI I-UYJ 22.1 | CRICO I-UYJ 25.2 |
| | | JMBBO I-UYJ 12.7 | BOOWW I-UYJ 18.9 | | |
| | | 2200 | 4000 | 5000 | 6000 |
| | | 2200 | 273° | 8000 | 9000 |
| | | IM | | | GS 3.00° |
| | | | | | TCH 56 |
| | | 4.7 NM | 6 NM | 3.1 NM | 3.1 NM |
| CATEGORY | A | B | C | D | |
| S-ILS 27C | RA 158/14 | | 150 | DA 803 | |

SA CATEGORY I ILS - SPECIAL AIRCREW & AIRCRAFT CERTIFICATION REQUIRED

EC-3, 26 DEC 2024 to 23 JAN 2025

EC-3, 26 DEC 2024 to 23 JAN 2025