

LOC/DME I-TSL 111.1 Chan 48	APP CRS 273°	Rwy ldg TDZE Apt Elev	13000 651 680
--	------------------------	-----------------------------	--

ILS RWY 28R (CAT II & III)

CHICAGO O'HARE INTL (ORD)

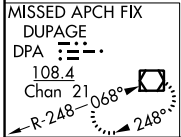
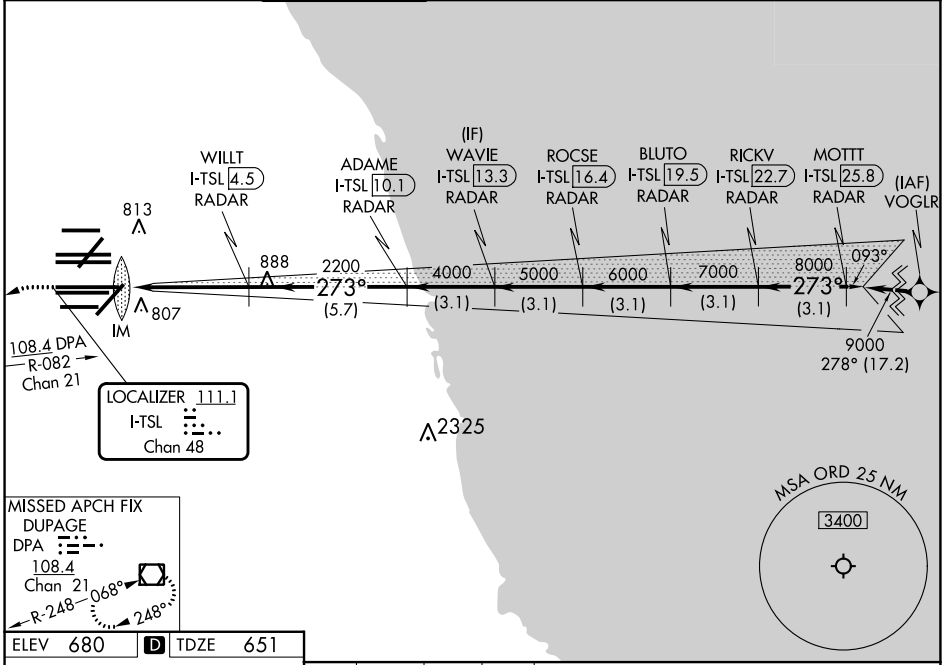
From VOGLR: RNAV 1-GPS required.
Aircraft not GPS equipped - RADAR required for procedure entry.
DME or RADAR required.



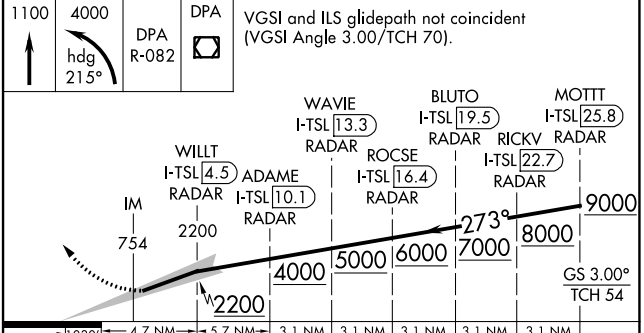
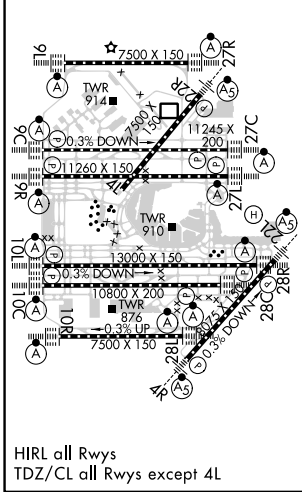
MISSED APPROACH: Climb to 1100 then climbing left turn to 4000 on heading 215° and DPA VOR/DME R-082 to DPA VOR/DME and hold.

Simultaneous approach authorized.

D-ATIS 135.4 282.225	CHICAGO APP CON 119.0 292.125	O'HARE TOWER 132.7 348.0	GND CON (TWR CENTER) 124.125 (TWR NORTH) 118.05 (TWR SOUTH) 226.675 (ALL TWRs)	121.75 (OBND) 121.9 (IBND)	CLNC DEL 121.6	CPDLC
--	---	------------------------------------	--	---	--------------------------	-------



ELEV 680	D	TDZE 651
----------	----------	----------



1100	4000	DPA	VGSI and ILS glidepath not coincident (VGSI Angle 3.00/TCH 70).
↑	hdg 215°	R-082	
WAVIE I-TSL [13.3] RADAR		BLUTO I-TSL [19.5] RADAR	MOTTT I-TSL [25.8] RADAR
WILLT I-TSL [4.5] RADAR		ADAME I-TSL [10.1] RADAR	RICKV I-TSL [22.7] RADAR
ROCSE I-TSL [16.4] RADAR		IM 754	
2200		273°	
4000		5000	
6000		7000	
8000		9000	
GS 3.00°		TCH 54	
0.30 NM	4.7 NM	5.7 NM	3.1 NM
3.1 NM	3.1 NM	3.1 NM	3.1 NM
CATEGORY A	B	C	D
S-ILS 28R	CAT II RA 97/12 100 DA 751		
S-ILS 28R	CAT III RVR 06		

CATEGORY II & III ILS - SPECIAL AIRCREW & AIRCRAFT CERTIFICATION REQUIRED

EC-3, 26 DEC 2024 to 23 JAN 2025

EC-3, 26 DEC 2024 to 23 JAN 2025