

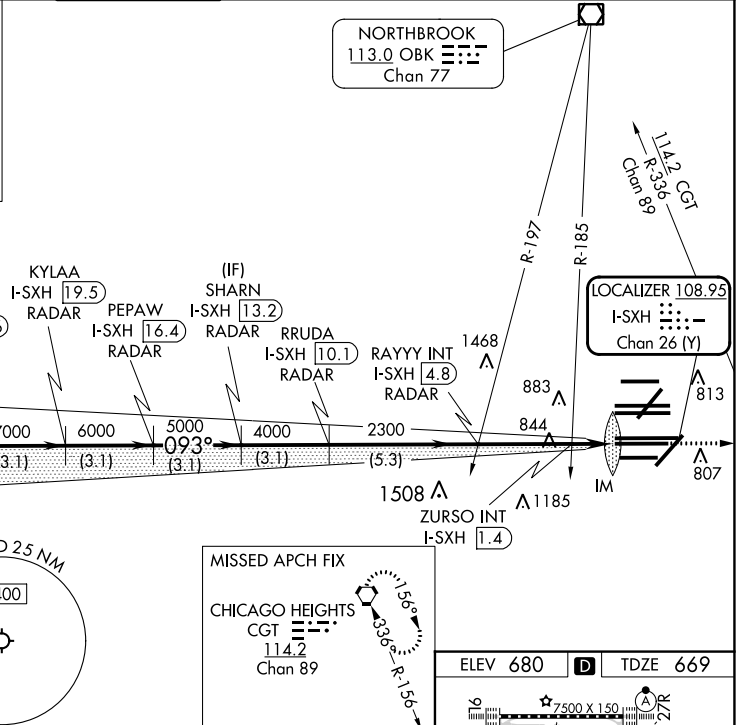
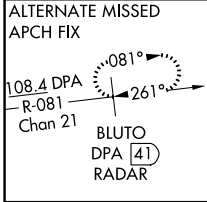
LOC/DME I-SXH <b>108.95</b> Chan 26(Y)	APP CRS <b>093°</b>	Rwy ldg TDZE <b>669</b> Apt Elev <b>680</b>
--	------------------------	---

# ILS or LOC RWY 10C

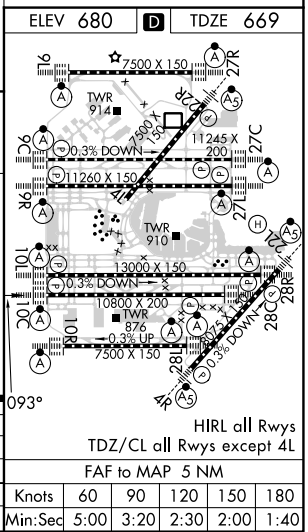
CHICAGO O'HARE INTL (ORD)

From GIBNS: RNAV-1 GPS required. ALSF-2  
 RNAV 1-GPS or RADAR required for procedure entry. DME or RADAR required. MISSED APPROACH: Climb to 4000 on heading 093° and CGT VORTAC R-336 to CGT VORTAC and hold.

D-ATIS <b>135.4</b> <b>282.225</b>	CHICAGO APP CON <b>119.0 292.125</b>	O'HARE TOWER <b>120.75 348.0</b>	GND CON (TWR CENTER) <b>124.125</b> (TWR NORTH) <b>118.05</b> (TWR SOUTH) <b>226.675</b> (ALL TWRs)	(TWR CENTER) <b>121.75</b> (OBND) <b>121.9</b> (IBND)	CLNC DEL <b>121.6</b>	CPDLC
--	---	-------------------------------------	--	---	--------------------------	-------



BAIRY I-SXH 25.8 RADAR	COUPR I-SXH 22.6 RADAR	KYLAA I-SXH 19.5 RADAR	PEPAW I-SXH 16.4 RADAR	SHARN I-SXH 13.2 RADAR	RRUDA I-SXH 10.1 RADAR	RAYYY INT I-SXH 4.8	ZURSO INT I-SXH 1.4	I-SXH DME ANTENNA
VGSi and ILS glidepath not coincident KYLAA (VGSi Angle 3.00/TCH 75).								*LOC only I-SXH 0.2
GS 3.00° TCH 55								IM
CATEGORY A B C D								HIRL all Rwy's TDZ/CL all Rwy's except 4L
S-ILS 10C 869/18 200 (200-½)								FAF to MAP 5 NM
S-LOC 10C 1220/24 551 (600-½) 1220/60 551 (600-1¼)								HIRL all Rwy's TDZ/CL all Rwy's except 4L
ZURSO FIX MINIMUMS (DUAL VOR RECEIVERS OR DME REQUIRED)								FAF to MAP 5 NM
S-LOC 10C 1100/24 431 (500-½) 1100/40 431 (500-¾)								HIRL all Rwy's TDZ/CL all Rwy's except 4L



EC-3, 26 DEC 2024 to 23 JAN 2025

EC-3, 26 DEC 2024 to 23 JAN 2025