

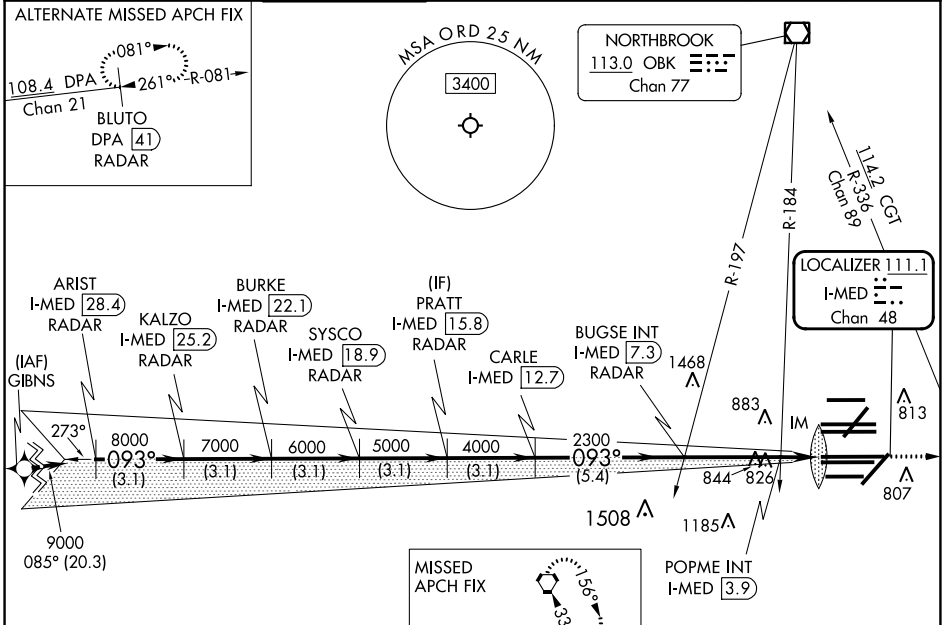
LOC/DME I-MED 111.1 Chan 48	APP CRS 093°	Rwy ldg TDZE 672 Apt Elev 680
--	------------------------	---

ILS or LOC RWY 10L

CHICAGO O'HARE INTL (ORD)

From GIBNS: RNAV-1 GPS required.	ALSF-2 	MISSED APPROACH: Climb to 4000 on heading 093° and CGT VORTAC R-336 to CGT VORTAC and hold.
RNAV 1-GPS or RADAR required for procedure entry. DME or RADAR required.		Simultaneous approach authorized.

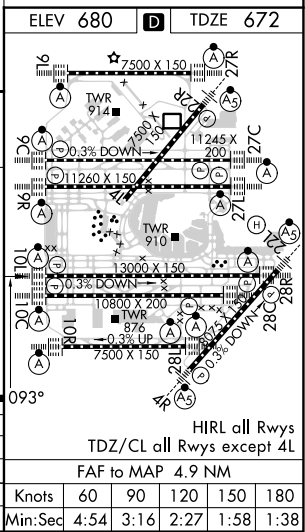
D-ATIS 135.4 282.225	CHICAGO APP CON 119.0 292.125	O'HARE TOWER 132.7 348.0	GND CON (TWR CENTER) 124.125 (TWR NORTH) 118.05 (TWR SOUTH) 226.675 (ALL TWRS)	(TWR CENTER) 121.75 (OBND) 121.9 (IBND)	CLNC DEL 121.6	CPDLC
--	---	------------------------------------	--	---	--------------------------	-------



VGSI and ILS glidepath not coincident (VGSI Angle 3.00/TCH 74).

CGT	CGT	hdg	CGT
R-336	R-336	093°	R-336
9000	8000	7000	6000
5000	4000	2300	1200
3.1 NM	3.1 NM	3.1 NM	0.1 NM
ARIST I-MED 28.4 RADAR	BURKE I-MED 22.1 RADAR	PRATT I-MED 15.8 RADAR	POPME INT I-MED 2.4
KALZO I-MED 25.2 RADAR	SYSCO I-MED 18.9 RADAR	BUGSE INT I-MED 7.3	CGT R-336
IAF GIBNS	CARLE I-MED 12.7 RADAR	CGT	
*LOC only.			

CATEGORY	A		B		C		D
S-ILS 10L	872/18		200 (200-½)				
S-LOC 10L	1200/24	528 (600-½)	1200/55		528 (600-1)		
POPME FIX MINIMUMS (DUAL VOR RECEIVERS OR DME REQUIRED)							
S-LOC 10L	1080/24	408 (400-½)	1080/40	408 (400-¾)			



CHICAGO O'HARE INTL (ORD) ILS or LOC RWY 10L

EC-3, 26 DEC 2024 to 23 JAN 2025

EC-3, 26 DEC 2024 to 23 JAN 2025