

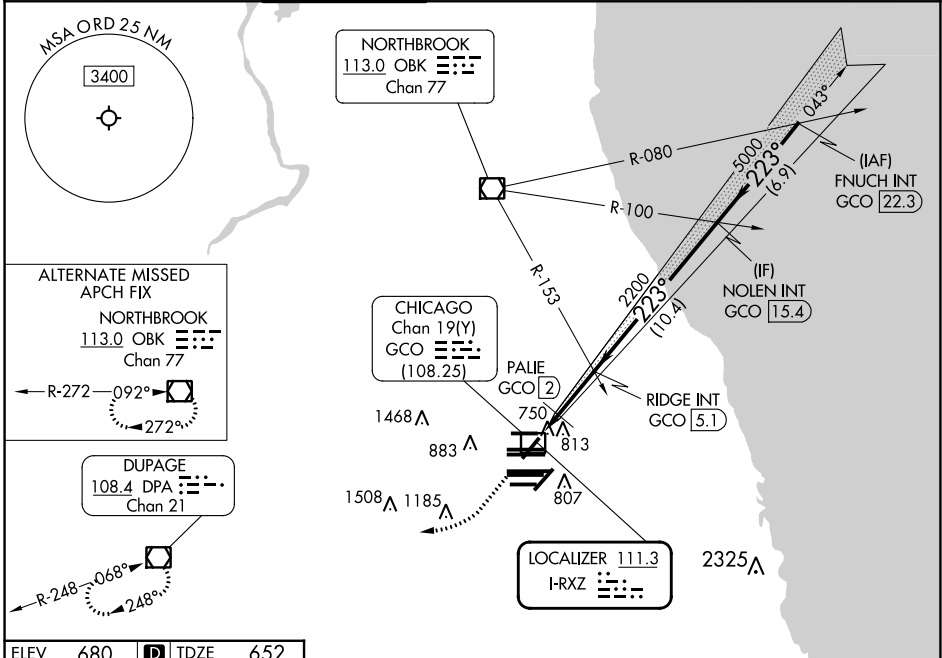
LOC I-RXZ 111.3	APP CRS 223°	Rwy ldg TDZE Apt Elev	7300 652 680
---------------------------	------------------------	-----------------------------	-----------------------------------------

ILS or LOC RWY 22R

CHICAGO O'HARE INTL (ORD)

RADAR required for procedure entry.		MALSR	MISSED APPROACH: Climb to 1300 then climbing right turn to 4000 direct DPA VOR/DME and hold.		
Simultaneous approach authorized. DME from GCO DME.					

D-ATIS 135.4 282.225	CHICAGO APP CON 119.0 292.125	O'HARE TOWER 126.9 348.0	124.125 GND CON 118.05 (TWR NORTH) 226.675 (TWR SOUTH) 226.675 (ALL TWRs)	(TWR CENTER) 121.75 (OBND) 121.9 (IBND)	CLNC DEL 121.6	CPDLC
------------------------------------------	------------------------------------------------	-------------------------------------------	----------------------------------------------------------------------------------------------------------------	-------------------------------------------------------------	--------------------------	-------



EC-3, 26 DEC 2024 to 23 JAN 2025

EC-3, 26 DEC 2024 to 23 JAN 2025

ELEV 680	D TDZE 652
HIRL all Rwys TDZ/CL all Rwys except 4L	
FAF to MAP 4.7 NM	
Knots	60 90 120 150 180
Min:Sec	4:42 3:08 2:21 1:53 1:34

1300	4000	DPA	VGSI and ILS glidepath not coincident (VGSI Angle 3.00/TCH 69).																																			
			FNUUCH INT GCO 22.3																																			
<table border="1"> <thead> <tr> <th>CATEGORY</th> <th>A</th> <th>B</th> <th>C</th> <th>D</th> </tr> </thead> <tbody> <tr> <td>S-ILS 22R</td> <td colspan="4">852/18 200 (200-½)</td> </tr> <tr> <td>S-LOC 22R</td> <td>1220/24</td> <td>568 (600-½)</td> <td>1220-1¼</td> <td>568 (600-1¼)</td> </tr> <tr> <td>C CIRCLING</td> <td>1220-1</td> <td>540 (600-1)</td> <td>1220-1½</td> <td>1460-2½</td> </tr> <tr> <td colspan="5">PALIE FIX MINIMUMS</td> </tr> <tr> <td>S-LOC 22R</td> <td>980/24</td> <td>328 (300-½)</td> <td>980/26</td> <td>328 (300-½)</td> </tr> <tr> <td>C CIRCLING</td> <td>1220-1</td> <td>540 (600-1)</td> <td>1220-1½</td> <td>1460-2½</td> </tr> </tbody> </table>				CATEGORY	A	B	C	D	S-ILS 22R	852/18 200 (200-½)				S-LOC 22R	1220/24	568 (600-½)	1220-1¼	568 (600-1¼)	C CIRCLING	1220-1	540 (600-1)	1220-1½	1460-2½	PALIE FIX MINIMUMS					S-LOC 22R	980/24	328 (300-½)	980/26	328 (300-½)	C CIRCLING	1220-1	540 (600-1)	1220-1½	1460-2½
CATEGORY	A	B	C	D																																		
S-ILS 22R	852/18 200 (200-½)																																					
S-LOC 22R	1220/24	568 (600-½)	1220-1¼	568 (600-1¼)																																		
C CIRCLING	1220-1	540 (600-1)	1220-1½	1460-2½																																		
PALIE FIX MINIMUMS																																						
S-LOC 22R	980/24	328 (300-½)	980/26	328 (300-½)																																		
C CIRCLING	1220-1	540 (600-1)	1220-1½	1460-2½																																		