

LOC/DME I-UYJ <b>111.9</b> Chan 56	APP CRS <b>273°</b>	Rwy ldg <b>11245</b> TDZE <b>653</b> Apt Elev <b>680</b>
--	------------------------	--

# ILS or LOC RWY 27C

CHICAGO O'HARE INTL (ORD)

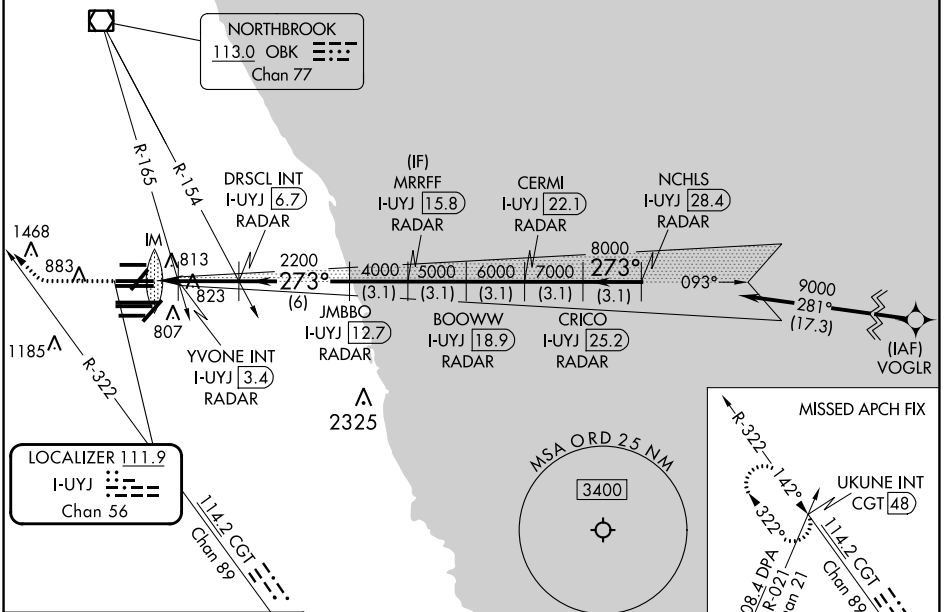
From VOGLR: RNAV 1-GPS required. Aircraft not GPS equipped - RADAR required for procedure entry. DME or RADAR required.

ALSF-2

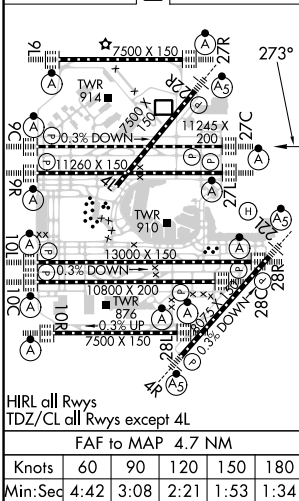
MISSED APPROACH: Climb to 1100 then climbing right turn to 4000 on heading 290° and CGT R-322 to UKUNE INT/ CGT 48 DME and hold.

Simultaneous approach authorized. For inop ALS, increase S-LOC 27C Cat C/D visibility to 1½ SM.

D-ATIS <b>135.4</b> <b>282.225</b>	CHICAGO APP CON <b>119.0 292.125</b>	O'HARE TOWER <b>121.15 348.0</b>	GND CON (TWR NORTH) <b>124.125</b> (TWR SOUTH) <b>118.05</b> (ALL TWRS) <b>226.675</b>	(TWR CENTER) (OBND) <b>121.75</b> (IBND) <b>121.9</b>	CLNC DEL <b>121.6</b>	CPDLC
--	---	-------------------------------------	---	--	--------------------------	-------



ELEV 680	<b>D</b>	TDZE 653
----------	----------	----------



1100	4000	CGT R-322	UKUNE INT	VGSI and ILS glidepath not coincident (VGSI Angle 3.00/TCH 75).	NCHLS I-UYJ 28.4 RADAR
↑	hdg 290°				CERMI I-UYJ 22.1 RADAR
					MRRFF I-UYJ 15.8 RADAR
					DRISCL INT I-UYJ 6.7 RADAR
					BOOWWW I-UYJ 18.9 RADAR
					JMBBO I-UYJ 12.7 RADAR
					CRICO I-UYJ 25.2 RADAR
					YVONE INT I-UYJ 3.4 RADAR
					IM
					2200
					1160
					4000 5000 6000 7000 8000 9000
					273°
					GS 3.00° TCH 56
CATEGORY	A	B	C	D	
S-ILS 27C	853/18 200 (200-½)				
S-LOC 27C	1160/24	507 (500-½)	1160/55	507 (500-1)	
YVONE FIX MINIMUMS (DUAL VOR RECEIVERS or DME REQUIRED)					
S-LOC 27C	1080/24	427 (400-½)	1080/40	427 (400-¾)	