

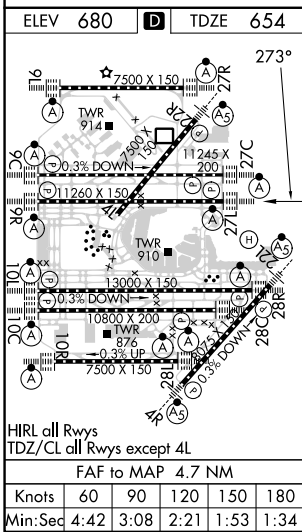
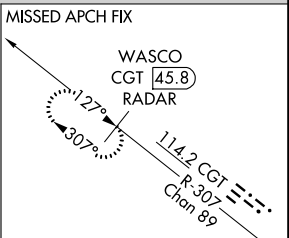
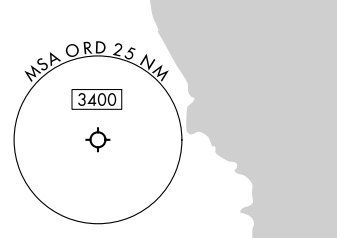
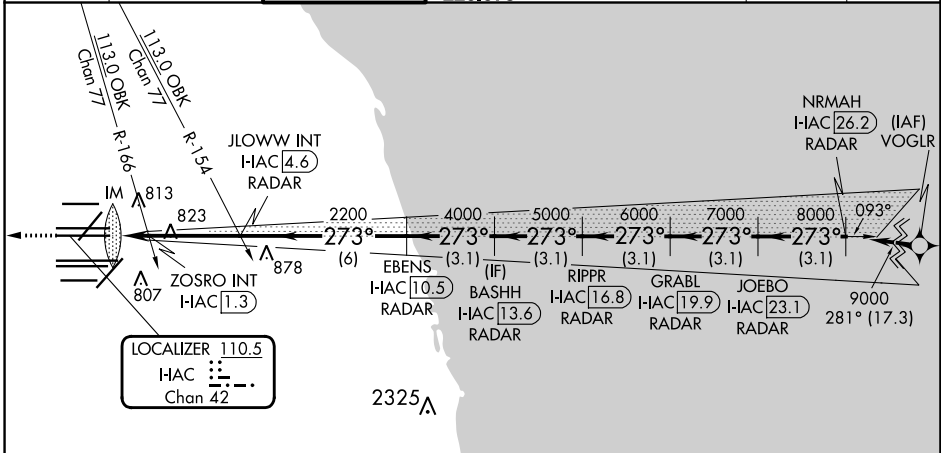
|  |                        |  |
|--|------------------------|--|
| LOC/DME I-IAC<br><b>110.5</b><br>Chan 42 | APP CRS<br><b>273°</b> | Rwy ldg <b>11260</b><br>TDZE <b>654</b><br>Apt Elev <b>680</b> |
|--|------------------------|--|

# ILS or LOC RWY 27L

CHICAGO O'HARE INTL (ORD)

|   |        |   |
|---|--------|---|
| RNP APCH-GPS from VOGLR   | ALSF-2 | MISSED APPROACH: Climb to 1200 then climb to 4000 on heading 265° and on CGT VORTAC R-307 to WASCO/CGT 45.8 DME/RADAR and hold. |
| Aircraft not GPS equipped - RADAR required for procedure entry. DME or RADAR required.          | (A)    |   |
| Simultaneous approach authorized. For inop ALS, increase S-LOC 27L Cat C/D visibility to 1½ SM. |        |   |

|  |   |                                    |   |   |                          |       |
|--|---|------------------------------------|---|---|--------------------------|-------|
| D-ATIS<br><b>135.4</b><br><b>282.225</b> | CHICAGO APP CON<br><b>119.0 292.125</b> | O'HARE TOWER<br><b>126.9 348.0</b> | GND CON<br><b>124.125</b> (TWR NORTH)<br><b>118.05</b> (TWR SOUTH)<br><b>226.675</b> (ALL TWRs) | (TWR CENTER)<br><b>121.75</b> (OBND)<br><b>121.9</b> (IBND) | CLNC DEL<br><b>121.6</b> | CPDLC |
|--|---|------------------------------------|---|---|--------------------------|-------|



|   |                    |                             |                           |   |                          |        |        |        |  |
|---|--------------------|-----------------------------|---------------------------|---|--------------------------|--------|--------|--------|--|
| ELEV 680  | D                  | TDZE 654                    |                           |   |                          |        |        |        |  |
| 1200  | 4000               | CGT R-307                   | WASCO CGT [45.8] RADAR    | VGSI and ILS glidepath not coincident (VGSI Angle 3.00/TCH 77). |                          |        |        |        |  |
| hdg 265°  |                    | JLOWW INT I-IAC [4.6] RADAR | BASHHH I-IAC [13.6] RADAR | GRABL I-IAC [19.9] RADAR  | NRMAH I-IAC [26.2] RADAR |        |        |        |  |
|   |                    | ZOSRO INT I-IAC [1.3] RADAR | RIPPR I-IAC [16.8] RADAR  | JOEBO I-IAC [23.1] RADAR  |                          |        |        |        |  |
|   |                    |                             |                           |   |                          |        |        |        |  |
| 0.1   | 1.3                | 3.3 NM                      | -6 NM-                    | 3.1 NM  | 3.1 NM                   | 3.1 NM | 3.1 NM | 3.1 NM |  |
| HIRL all Rwws   |                    |                             |                           |   |                          |        |        |        |  |
| TDZ/CL all Rwws except 4L                               |                    |                             |                           |   |                          |        |        |        |  |
| FAF to MAP 4.7 NM                                       |                    |                             |                           |   |                          |        |        |        |  |
| Knots   | 60                 | 90                          | 120                       | 150   | 180                      |        |        |        |  |
| Min:Sec   | 4:42               | 3:08                        | 2:21                      | 1:53  | 1:34                     |        |        |        |  |
| CATEGORY A B C D  |                    |                             |                           |   |                          |        |        |        |  |
| S-ILS 27L   | 854/18 200 (200-½) |                             |                           |   |                          |        |        |        |  |
| S-LOC 27L   | 1160/24            | 506 (500-½)                 | 1160/55                   | 506 (500-1)   |                          |        |        |        |  |
| ZOSRO FIX MINIMUMS (DUAL VOR RECEIVERS OR DME REQUIRED) |                    |                             |                           |   |                          |        |        |        |  |
| S-LOC 27L   | 1080/24            | 426 (400-½)                 | 1080/40                   | 426 (400-¾)   |                          |        |        |        |  |

EC-3, 26 DEC 2024 to 23 JAN 2025

EC-3, 26 DEC 2024 to 23 JAN 2025