

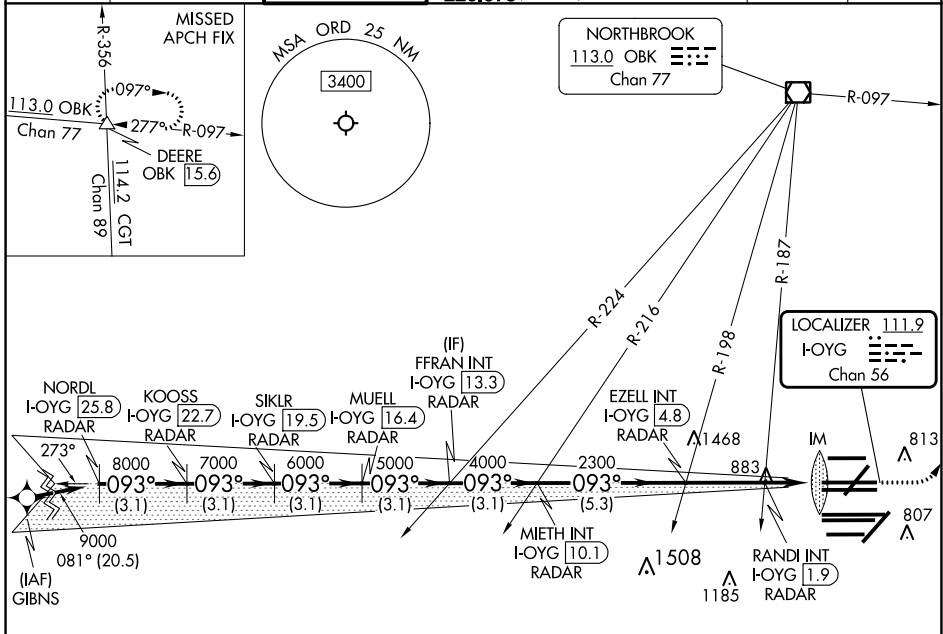
LOC/DME I-OYG 111.9 Chan 56	APP CRS 093°	Rwy Idg 11245 TDZE 673 Apt Elev 680
--	------------------------	--

ILS or LOC RWY 9C

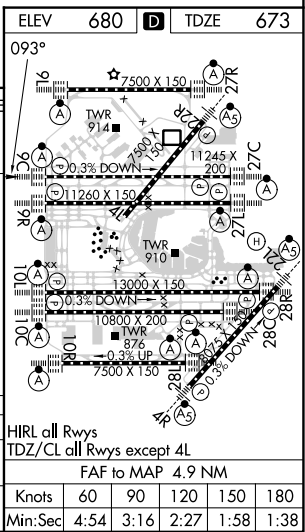
CHICAGO O'HARE INTL (ORD)

DME or RADAR required. From GIBNS: RNAV 1-GPS required. Aircraft not GPS equipped - RADAR required for procedure entry.	ALSF-2 	MISSED APPROACH: Climb to 1200 then climbing left turn to 4000 on heading 037° and OBK VOR/DME R-097 to DEERE INT/ OBK 15.6 DME and hold.
Simultaneous approach authorized. For inop ALS, increase S-LOC 9C Cat C/D visibility to 1½ SM.		

D-ATIS 135.4 282.225	CHICAGO APP CON 119.0 292.125	O'HARE TOWER 121.15 348.0	GND CON (TWR CENTER) 124.125 (TWR NORTH) 118.05 (TWR SOUTH) 226.675 (ALL TWRs)	(TWR CENTER) 121.75 (OBND) 121.9 (IBND)	CLNC DEL 121.6	CPDLC
--	--	--	--	---	--------------------------	-------



	ELEV 680	TDZE 673
NORDL I-OYG 25.8 RADAR	VGSI and ILS glidepath not coincident (VGSI Angle 3.00/TCH 72).	1200 4000 OBK DEERE
KOOSS I-OYG 22.7 RADAR	SIKLR I-OYG 19.5 RADAR	hdg 037°
SIKLR I-OYG 19.5 RADAR	FFRAN INT I-OYG 13.3 RADAR	
MUELL I-OYG 16.4 RADAR	EZZEL INT I-OYG 4.8 RADAR	
MIETH INT I-OYG 10.1 RADAR	RANDI INT I-OYG 1.9 RADAR	
GS 3.00° TCH 55	I-OYG DME ANTENNA IM	
3.1 NM	I-OYG 1.2	
3.1 NM	I-OYG 0.2	
CATEGORY	A	B
S-ILS 9C	873/18	200 (200-½)
S-LOC 9C	1140/24	467 (500-½)



EC-3, 26 DEC 2024 to 23 JAN 2025

EC-3, 26 DEC 2024 to 23 JAN 2025