

CHICAGO, ILLINOIS

AL-166 (FAA)


**ILS PRM RWY 10C (CAT II & III)**  
(CLOSE PARALLEL)

CHICAGO O'HARE INTL (ORD)

LOC/DME I-SXH	APP CRS	Rwy Ldg	10540
108.95	093°	TDZE	669
Chan 26(Y)		Apt Elev	680

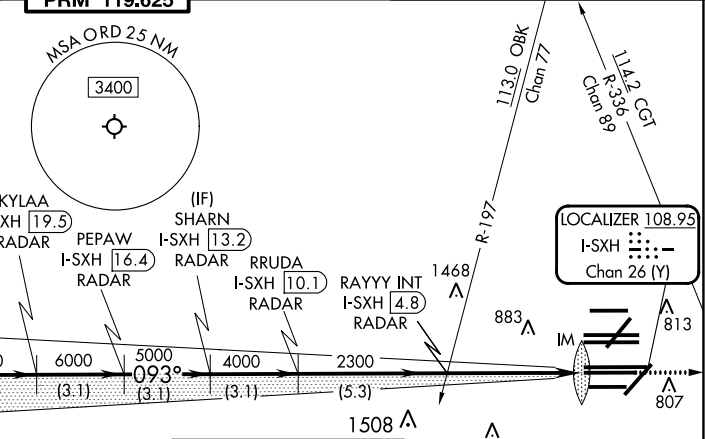
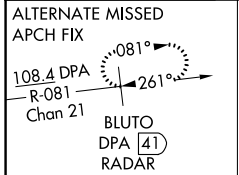
RNAV 1-GPS or RADAR required for procedure entry. DME or RADAR required.  
From GIBNS: RNAV-1 GPS required.

**▼** CAT II: RVR 1000 authorized with specific OPSPEC, MSPEC, or LOA approval and use of Autoland or HUD touchdown.  
Simultaneous approach authorized. Use of FD or AP required during simultaneous operations. Dual VHF comm required. See additional requirements on AAUP.

ALSF-2 

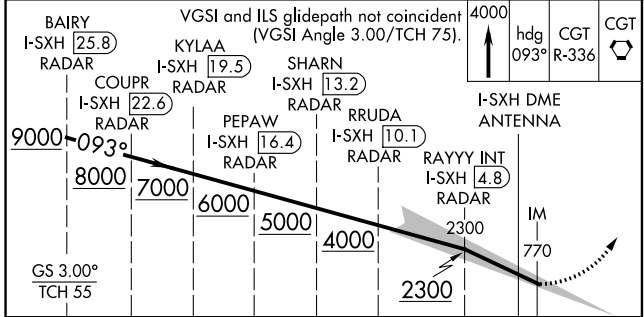
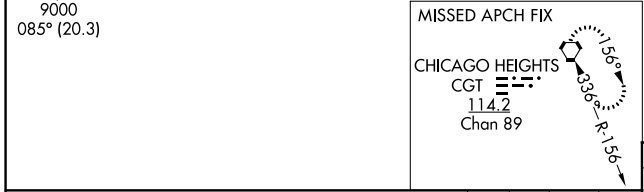
MISSED APPROACH: Climb to 4000 on heading 093° and CGT VORTAC R-336 to CGT VORTAC and hold.

D-ATIS	CHICAGO APP CON	O'HARE TOWER	GND CON (TWR CENTER)	CLNC DEL	CPDLC
135.4	119.0 292.125	120.75 348.0	121.75 (TWR NORTH) 118.05 (TWR SOUTH) 226.675 (ALL TWRs)	121.6	
282.225		PRM 119.625			



EC-3, 26 DEC 2024 to 23 JAN 2025

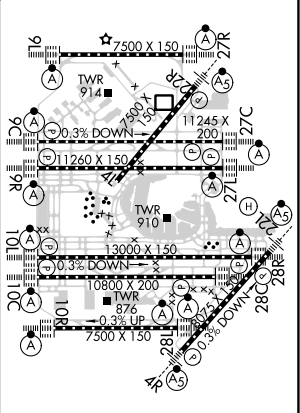
EC-3, 26 DEC 2024 to 23 JAN 2025



ELEV 680	D	TDZE 669
----------	---	----------

CATEGORY	A	B	C	D
S-ILS 10C	CAT II RA 102/12 100 DA 769			
S-ILS 10C	CAT III RVR 06			

**CATEGORY II and III ILS - SPECIAL AIRCREW & AIRCRAFT CERTIFICATION REQUIRED**



HIRL all Rwys  
TDZ/CL all Rwys except 4L

CHICAGO, ILLINOIS  
Amdt 1A 03JAN19

41°59'N-87°54'W

CHICAGO O'HARE INTL (ORD)

**ILS PRM RWY 10C (CAT II & III) (CLOSE PARALLEL)**