

| | | |
|---|------------------------|--|
| LOC/DME I-VZE 108.95 Chan 26 (Y) | APP CRS 273° | Rwy ldg 10800 TDZE 651 Apt Elev 680 |
|---|------------------------|--|

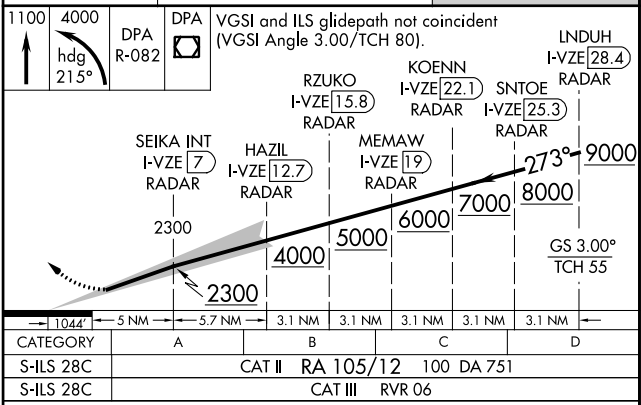
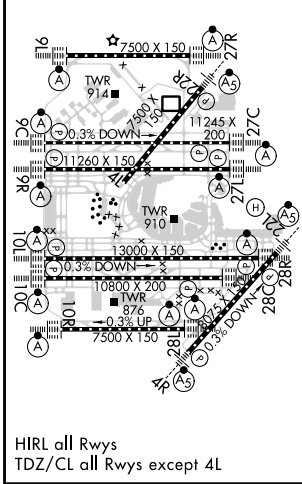
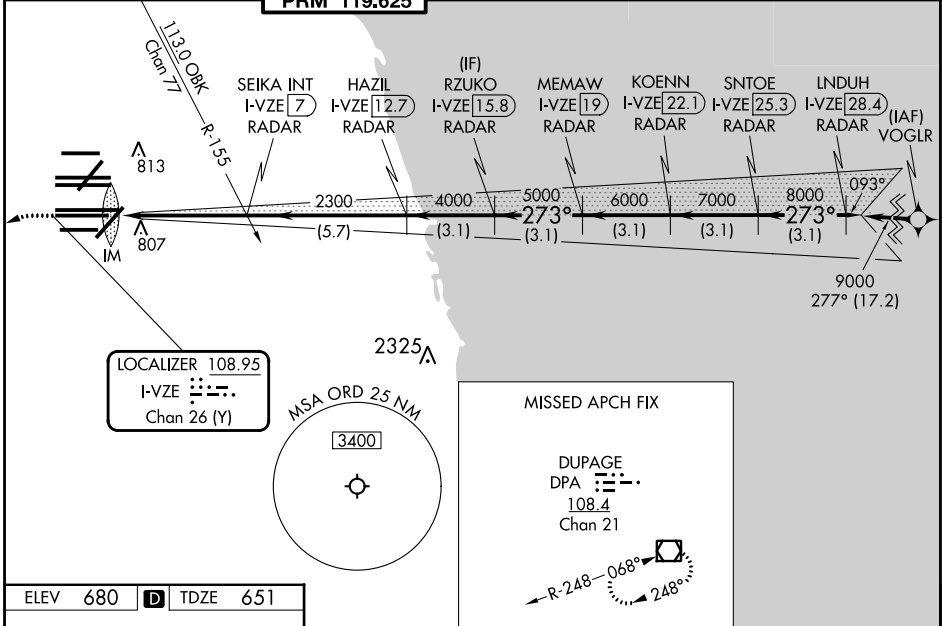
ILS PRM RWY 28C (CAT II & III) (CLOSE PARALLEL) CHICAGO O'HARE INTL (ORD)

Aircraft not GPS equipped - RADAR required for procedure entry.
DME or RADAR required.
From VOGLR: RNAV 1-GPS required.

ALSF-2
MISSED APPROACH:
Climb to 1100 then climbing left turn to 4000 on heading 215° and DPA VOR/DME R-082 to DPA VOR/DME and hold.

Simultaneous approach authorized. Use of FD or AP required during simultaneous operations. Dual VHF comm required. See additional requirements on AAUP.
CAT II: RVR 1000 authorized with specific ODSPEC, MSPEC, or LOA approval and use of autoland or HUD to touchdown.

| | | | | | | |
|--|---|---|---|---|--------------------------|-------|
| D-ATIS 135.4 282.225 | CHICAGO APP CON 119.0 292.125 | O'HARE TOWER 120.75 348.0 PRM 119.625 | GND CON (TWR NORTH) 124.125 (TWR SOUTH) 118.05 (ALL TWRS) 226.675 | (TWR CENTER) 121.75 (OBND) 121.9 (IBND) | CLNC DEL 121.6 | CPDLC |
|--|---|---|---|---|--------------------------|-------|



| | | | | |
|-----------|-----------------------------|---|---|---|
| CATEGORY | A | B | C | D |
| S-ILS 28C | CAT II RA 105/12 100 DA 751 | | | |
| S-ILS 28C | CAT III RVR 06 | | | |

CATEGORY II & III ILS - SPECIAL AIRCREW & AIRCRAFT CERTIFICATION REQUIRED