

LOC/DME I-BYW 110.9 Chan 46	APP CRS 091°	Rwy Idg 7500 TDZE 680 Apt Elev 680
--	------------------------	---

ILS Y or LOC Y RWY 10R

CHICAGO O'HARE INTL (ORD)

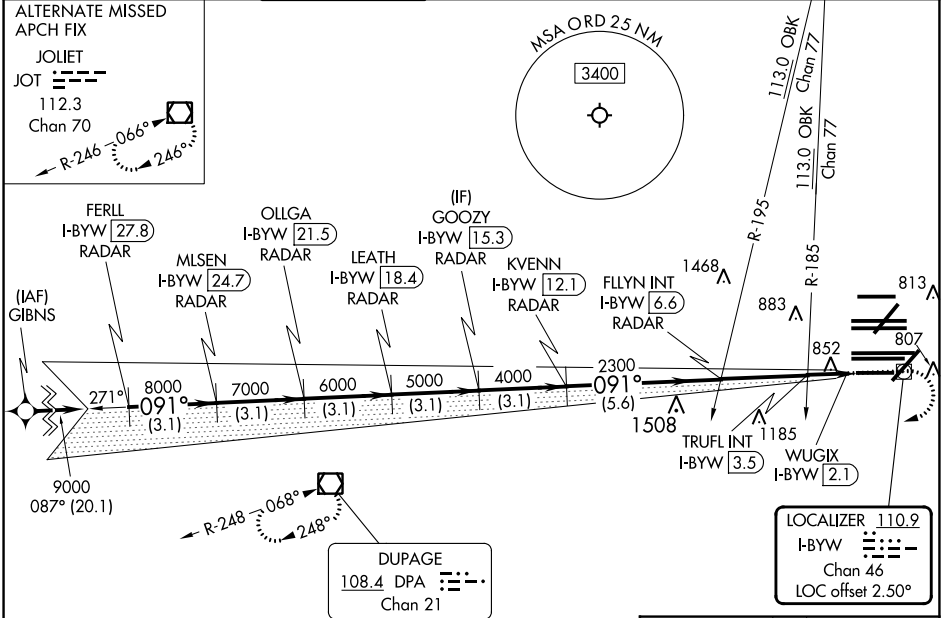
RNAV 1-GPS or RADAR required for procedure entry. DME or RADAR required.
From GIBNS: RNAV-1 GPS required.

Simultaneous approach authorized.

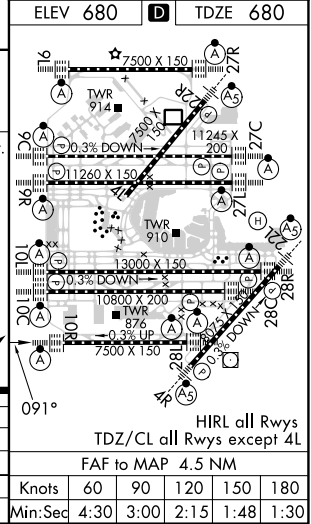
ALSF-2

MISSED APPROACH: Climb to 1200 then climbing right turn to 4000 direct DPA VOR/DME and hold.

D-ATIS 135.4 282.225	CHICAGO APP CON 119.0 292.125	O'HARE TOWER 133.0 348.0	GND CON (TWR CENTER) 124.125 (TWR NORTH) 118.05 (TWR SOUTH) 226.675 (ALL TWRS)	(TWR CENTER) 121.75 (OBND) 121.9 (IBND)	CLNC DEL 121.6	CPDLC
--	---	------------------------------------	--	---	--------------------------	-------



FERLL I-BYW 27.8 RADAR	OLLGA I-BYW 21.5 RADAR	GOOZY I-BYW 15.3 RADAR	FLYIN INT I-BYW 6.6 RADAR	*LOC only.		
MLSEN I-BYW 24.7 RADAR	LEATH I-BYW 18.4 RADAR	KVENN I-BYW 12.1 RADAR	TRUFL INT I-BYW 3.5 RADAR	WUGIX I-BYW 2.1		
9000 091°				2300		
8000				2300		
7000				2300		
6000				2300		
5000				2300		
4000				2300		
3000				2300		
GS 3.00° TCH 55				2300		
3.1 NM				3.1 NM	0.6	0.8
CATEGORY A				B		
S-ILS 10R				930/24 250 (300-½)		
S-LOC 10R				1220/24 540 (600-½) 1220/55 540 (600-1)		
TRUFL FIX MINIMUMS (DUAL VOR RECEIVERS OR DME REQUIRED)						
S-LOC 10R				1120/24 440 (500-½) 1120/40 440 (500-¾)		



EC-3, 26 DEC 2024 to 23 JAN 2025

EC-3, 26 DEC 2024 to 23 JAN 2025