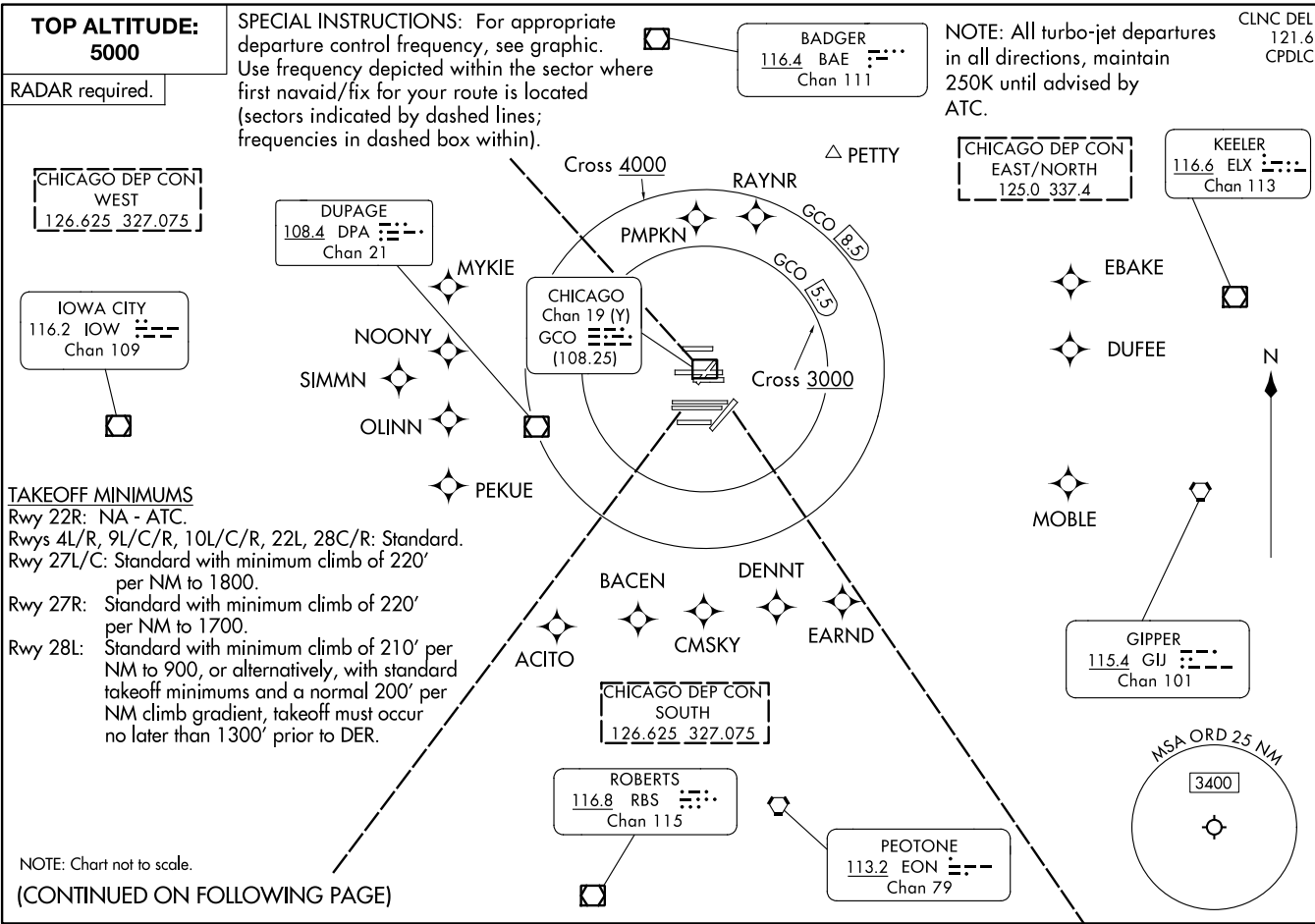


30NOV23

O'HARE EIGHT DEPARTURE

CHICAGO, ILLINOIS
CHICAGO O'HARE INTL (ORD)



**TOP ALTITUDE:
5000**

RADAR required.

CHICAGO DEP CON
WEST
126.625 327.075

IOWA CITY
116.2 IOW
Chan 109

SPECIAL INSTRUCTIONS: For appropriate departure control frequency, see graphic. Use frequency depicted within the sector where first navaid/fix for your route is located (sectors indicated by dashed lines; frequencies in dashed box within).

BADGER
116.4 BAE
Chan 111

NOTE: All turbo-jet departures in all directions, maintain 250K until advised by ATC.

CHICAGO DEP CON
EAST/NORTH
125.0 337.4

KEELER
116.6 ELX
Chan 113

CLNC DEL
121.6
CPDLC

TAKEOFF MINIMUMS

Rwy 22R: NA - ATC.
Rwys 4L/R, 9L/C/R, 10L/C/R, 22L, 28C/R: Standard.
Rwy 27L/C: Standard with minimum climb of 220' per NM to 1800.
Rwy 27R: Standard with minimum climb of 220' per NM to 1700.
Rwy 28L: Standard with minimum climb of 210' per NM to 900, or alternatively, with standard takeoff minimums and a normal 200' per NM climb gradient, takeoff must occur no later than 1300' prior to DER.

NOTE: Chart not to scale.

(CONTINUED ON FOLLOWING PAGE)

O'HARE EIGHT DEPARTURE

CHICAGO O'HARE INTL (ORD)
CHICAGO, ILLINOIS

240225

AL-166 (FAA)

O'HARE EIGHT DEPARTURE



DEPARTURE ROUTE DESCRIPTION

ALL AIRCRAFT: Expect RADAR vectors to first enroute navaid/fix.
Expect clearance to requested altitude/flight level ten minutes after departure.

ALL AIRCRAFT: Cross 5.5 DME arc of GCO DME at or above 3000, cross
8.5 DME arc of GCO DME at or above 4000, maintain 5000 or assigned altitude.
If unable to comply advise ATC as soon as possible prior to departure.

EC-3, 26 DEC 2024 to 23 JAN 2025

EC-3, 26 DEC 2024 to 23 JAN 2025