

WAAS CH 48904 W10A	APP CRS 093°	Rwy Idg 12246 TDZE 672 Apt Elev 680
--	------------------------	--

RNAV (GPS) RWY 10L

CHICAGO O'HARE INTL (ORD)

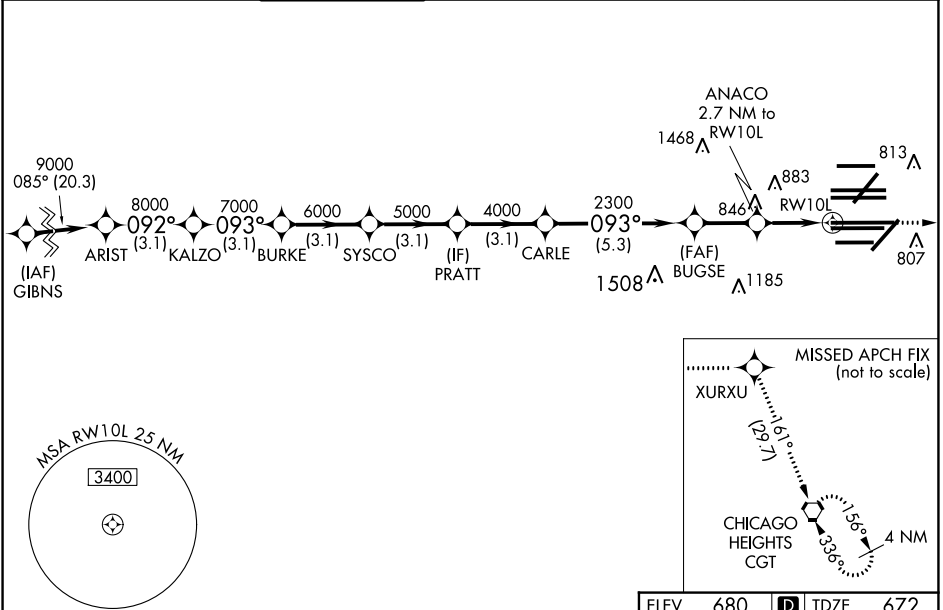
RADAR required for procedure entry: RNP APCH.

▼ For uncompensated Baro-VNAV systems, LNAV/VNAV NA below -19°C or above 54°C. Simultaneous approach authorized. LNAV procedure NA during simultaneous operations. Use of FD or AP providing RNAV track guidance required during simultaneous operations.



MISSED APPROACH: Climb to 4000 direct XURXU and on track 161° to CGT VORTAC and hold.

D-ATIS 135.4 282.225	CHICAGO APP CON 119.0 292.125	O'HARE TOWER 132.7 348.0	GND CON (TWR NORTH) 124.125 (TWR SOUTH) 118.05 (ALL TWRS) 226.675	(TWR CENTER) (OBND) 121.75 (IBND) 121.9	CLNC DEL 121.6	CPDLC
--	---	------------------------------------	---	---	--------------------------	-------



EC-3, 26 DEC 2024 to 23 JAN 2025

EC-3, 26 DEC 2024 to 23 JAN 2025

VGSi and RNAV glidepath not coincident (VGSi Angle 3.00/TCH 74).		4000	XURXU	tr 161°	CGT			
ARIST	KALZO	BURKE	SYSCO	PRATT	CARLE	BUGSE	ANACO	RWY 10L
9000	8000	7000	6000	5000	4000	2300	1580	
GP 3.00° TCH 56	3.1 NM	3.1 NM	3.1 NM	3.1 NM	5.3 NM	2.2 NM	1.5	1.2
CATEGORY	A		B		C		D	
LPV DA	872/18		200 (200-½)					
LNAV/VNAV DA	1062/35		390 (400-¾)					
LNAV MDA	1120/24	448 (500-½)		1120/45		448 (500-¾)		

