

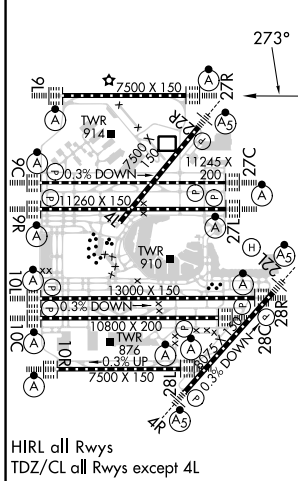
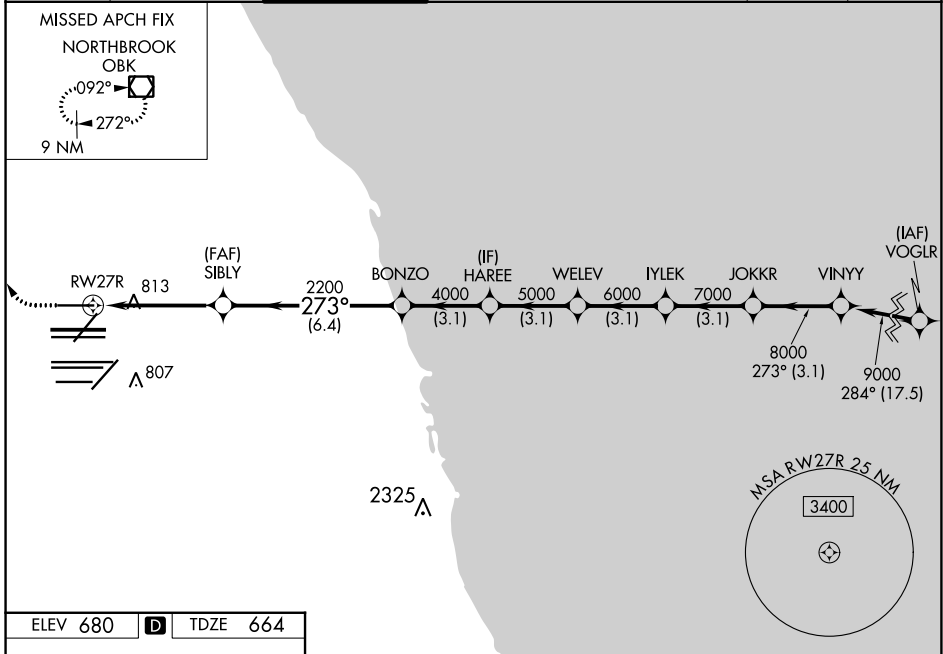
WAAS CH 69508 W27B	APP CRS 273°	Rwy Idg TDZE 664 Apt Elev 680
--	------------------------	---

RNAV (GPS) RWY 27R

CHICAGO O'HARE INTL (ORD)

RNP APCH. RADAR required for procedure entry.	ALSF-2 	MISSED APPROACH: Climb to 1100 then climbing right turn to 4000 direct OBK VOR/DME and hold, continue climb-in-hold to 4000.
<p>Simultaneous approach authorized. LNAV procedure NA during simultaneous operations. Use of FD or AP providing RNAV track guidance required during simultaneous operations. For uncompensated Baro-VNAV systems, procedure NA below -1°C or above 54°C.</p>		

D-ATIS 135.4 282.225	CHICAGO APP CON 119.0 292.125	O'HARE TOWER 128.15 348.0	GND CON (TWR NORTH) 124.125 (TWR SOUTH) 118.05 226.675 (ALL TWRs)	(TWR CENTER) (OBND) 121.75 (IBND) 121.9	CLNC DEL 121.6	CPDLC
--	---	-------------------------------------	---	---	--------------------------	-------



ELEV 680	D	TDZE 664																
1100	4000	OBK																
* LNAV only.																		
* 1.3 NM to RWY27R																		
<table border="1"> <tr> <td>1.3</td> <td>3.4</td> <td>6.4 NM</td> <td>3.1 NM</td> <td>3.1 NM</td> <td>3.1 NM</td> <td>3.1 NM</td> <td>3.1 NM</td> </tr> <tr> <td>Category A</td> <td>Category B</td> <td>Category C</td> <td>Category D</td> <td colspan="4"></td> </tr> </table>			1.3	3.4	6.4 NM	3.1 NM	3.1 NM	3.1 NM	3.1 NM	3.1 NM	Category A	Category B	Category C	Category D				
1.3	3.4	6.4 NM	3.1 NM	3.1 NM	3.1 NM	3.1 NM	3.1 NM											
Category A	Category B	Category C	Category D															
LPV DA	864/18		200 (200-½)															
LNAV/VNAV DA	961/24		297 (300-½)															
LNAV MDA	1120/24		456 (500-½)		1120/45		456 (500-¾)											

EC-3, 26 DEC 2024 to 23 JAN 2025

EC-3, 26 DEC 2024 to 23 JAN 2025