

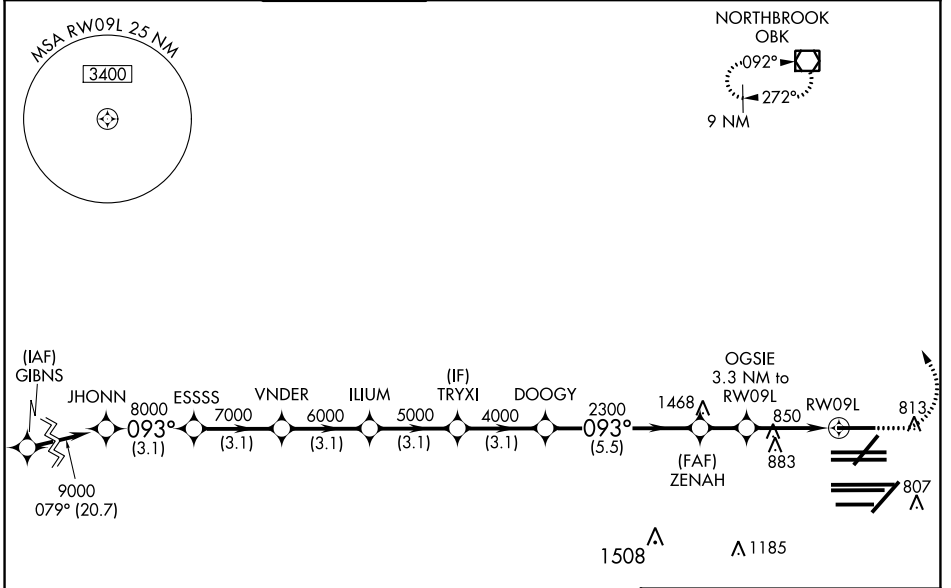
WAAS CH <b>99508</b> <b>W09B</b>	APP CRS <b>093°</b>	Rwy ldg <b>7500</b> TDZE <b>668</b> Apt Elev <b>680</b>
--	------------------------	---

# RNAV (GPS) RWY 9L

CHICAGO O'HARE INTL (ORD)

RADAR required for procedure entry. RNP APCH.		ALSIF-2 	MISSED APPROACH: Climb to 1100 then climbing left turn to 4000 direct OBK VOR/DME and hold, continue climb-in-hold to 4000.
Simultaneous approach authorized. LNAV procedure NA during simultaneous operations. Use of FD or AP providing RNAV track guidance required during simultaneous operations. For uncompensated Baro-VNAV systems, procedure NA below -19°C or above 54°C.			

D-ATIS <b>135.4</b> <b>282.225</b>	CHICAGO APP CON <b>119.0 292.125</b>	O'HARE TOWER <b>128.15 348.0</b>	GND CON (TWR NORTH) <b>124.125</b> (TWR SOUTH) <b>118.05</b> (ALL TWRS) <b>226.675</b>	(TWR CENTER) <b>121.75</b> (OBND) <b>121.9</b> (IBND)	CLNC DEL <b>121.6</b>	CPDLC
--	---	-------------------------------------	---	---	--------------------------	-------



ELEV 680		TDZE 668	
<p>JHONN 9000 093°</p> <p>GP 3.00° TCH 55</p> <p>ESSSS 7000</p> <p>VNDER 6000</p> <p>ILUUM 5000</p> <p>TRYXI 4000</p> <p>DOOGY 2300</p> <p>ZENAH 2300 *1760</p> <p>OGSIE 3.3 NM to RWY09L</p> <p>*1.2 NM to RWY09L</p> <p>RWY09L</p>		<p>1100 4000 OBK</p> <p>*LNAV only.</p>	
CATEGORY	A	B	D
LPV DA	868/18		200 (200-1/2)
LNAV/VNAV DA	1034/35		366 (400-3/4)
LNAV MDA	1100/24	432 (500-1/2)	1100/40 432 (500-3/4)