

RNAV (GPS) PRM Y RWY 10R

(CLOSE PARALLEL)

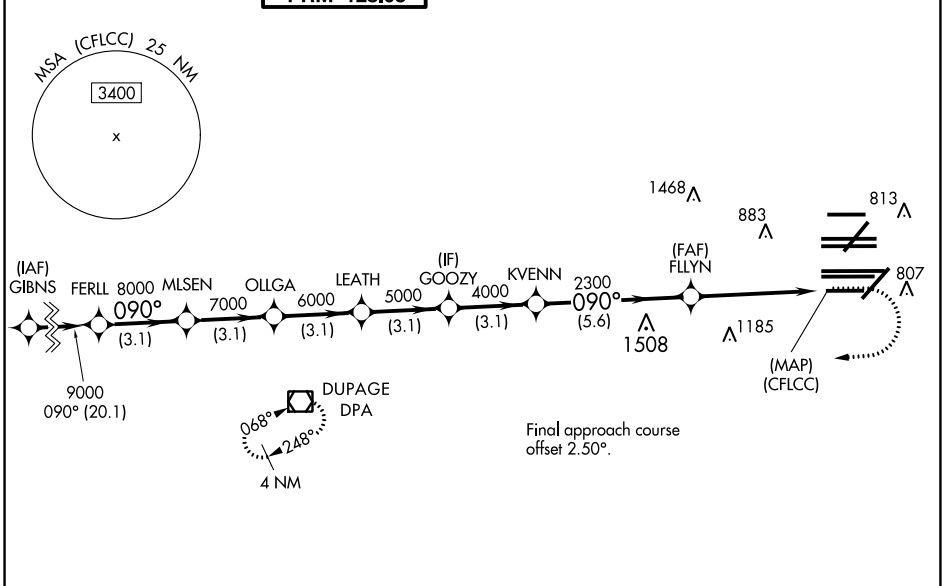
CHICAGO O'HARE INTL (ORD)

WAAS CH 77937 W10D	APP CRS 090°	Rwy Idg TDZE Apt Elev	7500 680 680
----------------------------------------	------------------------	-----------------------------	-----------------------------------------

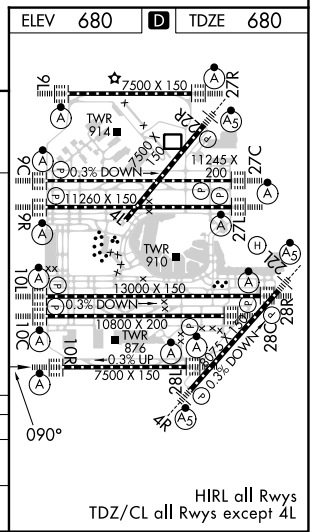
RNP APCH.
 Simultaneous approach authorized. Dual VHF comm required. See additional requirements on AAUP. For uncompensated Baro-VNAV systems, LNAV/VNAV NA below -19°C or above 54°C. Use of FD or AP providing RNAV track guidance required during simultaneous operations. For inop ALS, increase LNAV/VNAV all Cats visibility to 1 $\frac{1}{2}$ SM.

ALS-2
 MISSED APPROACH: Climb to 1200 then climbing right turn to 4000 direct DPA VOR/DME and hold.

D-ATIS 135.4 282.225	CHICAGO APP CON 119.0 292.125	O'HARE TOWER 133.0 348.0 PRM 128.05	GND CON (TWR CENTER) 124.125 (TWR NORTH) 118.05 (TWR SOUTH) 226.675 (ALL TWRs)	121.75 (OBND) 121.9 (IBND)	CLNC DEL 121.6	CPDLC
------------------------------------------	-----------------------------------------	---------------------------------------------------------	--------------------------------------------------------------------------------------------------------------	---------------------------------------------	--------------------------	-------



	ELEV 680	TDZE 680	
	1200	4000	DPA
FERLL	9000	090°	
MLSN	8000		
OLLGA	7000		
LEATH	6000		
GOOZY	5000		
KVENN	4000		
FLLYN	2300	(CFLCC)	
	GP 3.00		
	TCH 55		
	3.1 NM	3.1 NM	3.1 NM
	3.1 NM	3.1 NM	5.6 NM
			4.9 NM
CATEGORY	A	B	C
LPV DA		930/24	250 (300-1/2)
LNAV/VNAV DA		1157/50	477 (500-1)



EC-3, 26 DEC 2024 to 23 JAN 2025

EC-3, 26 DEC 2024 to 23 JAN 2025

RNAV (GPS) PRM Y RWY 10R (CLOSE PARALLEL)