

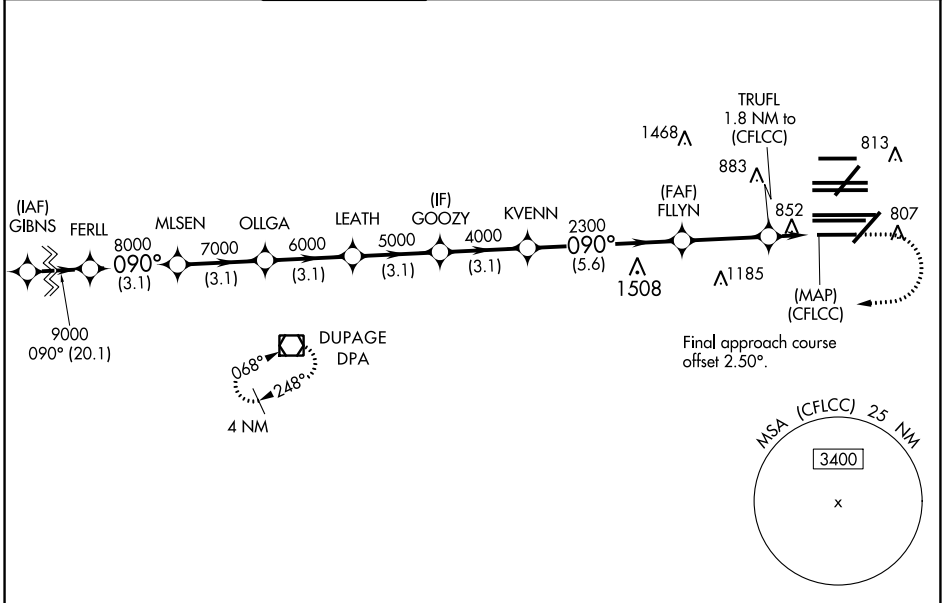
WAAS CH 77937 W10D	APP CRS 090°	Rwy Idg TDZE Apt Elev	7500 680 680
--	------------------------	-----------------------------	---

RNAV (GPS) Y RWY 10R

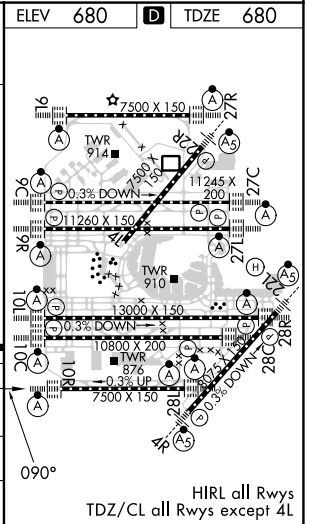
CHICAGO O'HARE INTL (ORD)

RNP APCH	<p>Simultaneous approach authorized. For uncompensated Baro-VNAV systems, LNAV/VNAV NA below -19°C or above 54°C. LNAV procedure NA during simultaneous operations. Use of FD or AP providing RNAV track guidance required during simultaneous operations. For inop ALS, increase LNAV/VNAV all Cats visibility to 1½ SM.</p>	ALS-F-2 	MISSED APPROACH: Climb to 1200 then climbing right turn to 4000 direct DPA VOR/DME and hold.
----------	---	-------------	---

D-ATIS 135.4 282.225	CHICAGO APP CON 119.0 292.125	O'HARE TOWER 133.0 348.0	GND CON (TWR CENTER) 124.125 (TWR NORTH) 118.05 (TWR SOUTH) 226.675 (ALL TWRs)	(TWR CENTER) (OBND) 121.75 (IBND) 121.9	CLNC DEL 121.6	CPDLC
--	---	------------------------------------	--	---	--------------------------	-------



	ELEV 680	TDZE 680
	1200	4000
		DPA
		*LNAV only.
	GP 3.00	TCH 55
	3.1 NM	3.1 NM
	3.1 NM	3.1 NM
	3.1 NM	3.1 NM
	3.1 NM	3.1 NM
	5.6 NM	3.1 NM
	0.6	1.2
CATEGORY	A	B
LPV DA	930/24	250 (300-½)
LNAV/VNAV DA	1157/50	477 (500-1)
LNAV MDA	1120/24	440 (500-½)
		1120/40
		440 (500-¾)



EC-3, 26 DEC 2024 to 23 JAN 2025

EC-3, 26 DEC 2024 to 23 JAN 2025