

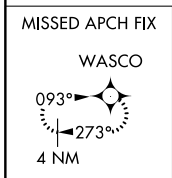
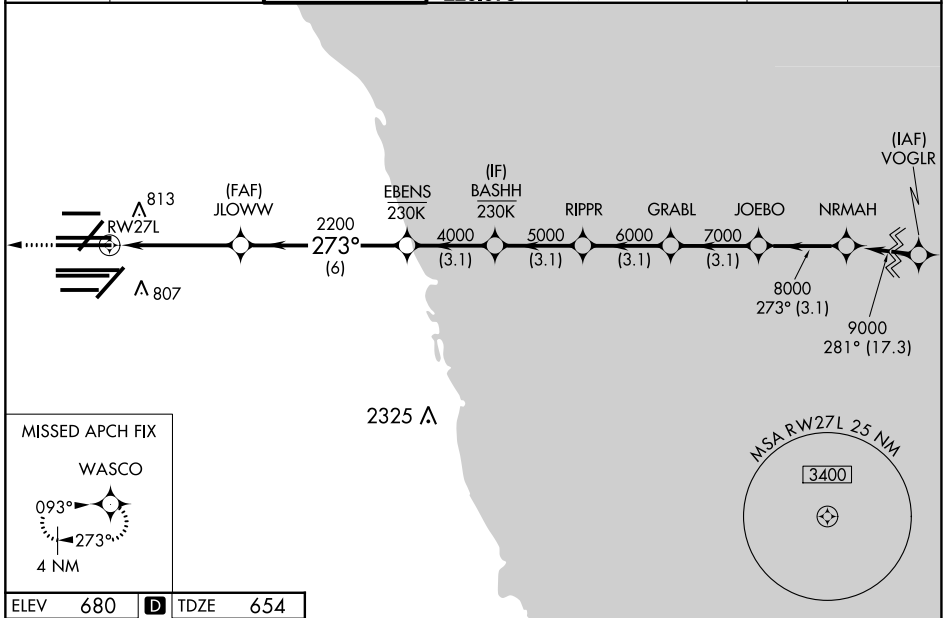
WAAS CH 77804 W27A	APP CRS 273°	Rwy Idg 11260 TDZE 654 Apt Elev 680
--	------------------------	--

RNAV (GPS) Z RWY 27L

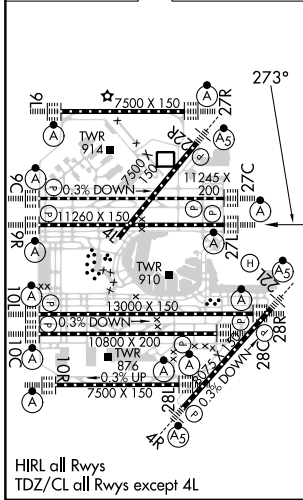
CHICAGO O'HARE INTL (ORD)

RNP APCH - GPS.		ALSIF-2	MISSED APPROACH: Climb to 4000 direct WASCO and hold.
<p>Simultaneous approach authorized. LNAV procedure NA during simultaneous operations. Use of FD or AP required during simultaneous operations. For uncompensated Baro-VNAV systems, LNAV/VNAV NA below -19°C or above 54°C.</p>			

D-ATIS 135.4 282.225	CHICAGO APP CON 119.0 292.125	O'HARE TOWER 126.9 348.0	GND CON (TWR NORTH) 124.125 (TWR SOUTH) 118.05 (ALL TWRs) 226.675	(TWR CENTER) 121.75 (IOBND) 121.9 (IBND)	CLNC DEL 121.6	CPDLC
--	---	------------------------------------	---	--	--------------------------	-------



ELEV 680	D	TDZE 654
----------	----------	----------



4000	WASCO	VGSI and RNAV glidepath not coincident (VGSI Angle 3.00/TCH 77).		NRMAH				
↑		JLOWW	EBENS	BASHH	RIPPR	GRABL	JOEBO	NRMAH
		2200	4000	5000	6000	7000	8000	9000
		1.2	3.5	6	3.1	3.1	3.1	3.1
		RW27L		1.2 NM to RW27L				
				2200		GP 3.00° TCH 57		
CATEGORY	A	B	C	D				
LPV	DA	854/18		200 (200-½)				
LNAV/VNAV	DA	1088/40		434 (500-¾)				
LNAV MDA	1100/24	446 (500-½)		1100/45	446 (500-¾)			

EC-3, 26 DEC 2024 to 23 JAN 2025

EC-3, 26 DEC 2024 to 23 JAN 2025