

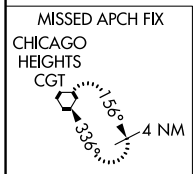
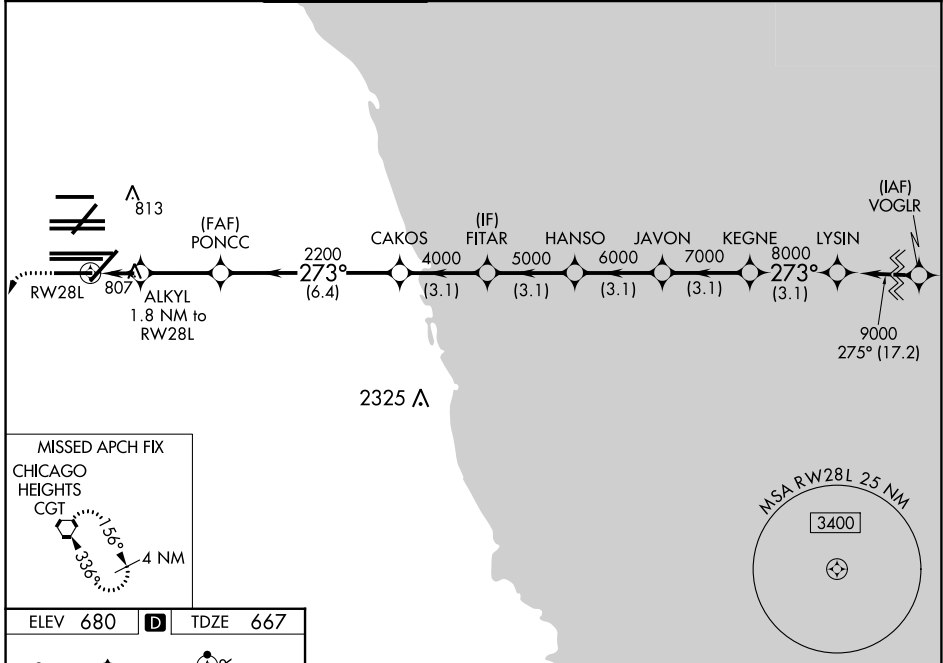
WAAS CH 65837 W28D	APP CRS 273°	Rwy Idg TDZE Apt Elev	7500 667 680
--	------------------------	-----------------------------	---

RNAV (GPS) Z RWY 28L

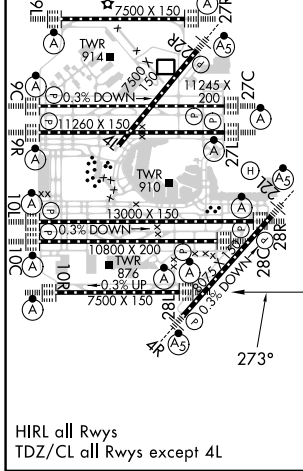
CHICAGO O'HARE INTL (ORD)

RNP APCH.	ALSF-2	MISSED APPROACH: Climb 1200 then climbing left turn to 4000 direct CGT VORTAC and hold.
▼ Simultaneous approach authorized. LNAV procedure NA during simultaneous operations. For uncompensated Baro-VNAV systems, LNAV/VNAV NA below -19C or above 54C. Use of FD or AP required during simultaneous operations.		

D-ATIS 135.4 282.225	CHICAGO APP CON 119.0 292.125	O'HARE TOWER 133.0 348.0	GND CON (TWR NORTH) 124.125 (TWR SOUTH) 118.05 226.675 (ALL TWRs)	(TWR CENTER) (OBND) 121.75 (IBND) 121.9	CLNC DEL 121.6	CPDLC
--	--	------------------------------------	---	---	--------------------------	-------



ELEV 680	D	TDZE 667
----------	----------	----------



1200	4000	CGT						
*LNAV only.								
ALKYL	PONCC	CAKOS	FITAR	HANSO	JAVON	KEGNE	LYSIN	
1.8 NM to RWY28L	2200	4000	5000	6000	7000	8000	9000	
*1.1 NM to RWY28L								GP 3.00° TCH 55
1.1 NM	0.7	2.9 NM	6.4 NM	3.1 NM	3.1 NM	3.1 NM	3.1 NM	3.1 NM
CATEGORY A			CATEGORY B			CATEGORY C		CATEGORY D
LPV DA		867/18			200 (200-1/2)			
LNAV/VNAV DA		1090/40			423 (500-3/4)			
LNAV MDA		1060/24			393 (400-1/2)		1060/35 393 (400-5/8)	

EC-3, 26 DEC 2024 to 23 JAN 2025

EC-3, 26 DEC 2024 to 23 JAN 2025