

GOLDSBORO, NORTH CAROLINA

# HI-TACAN Z RWY 8

SEYMOUR JOHNSON AFB (KGSB)

TACAN GSB Chan <b>112</b>	APCH CRS <b>081°</b>	Rwy ldg <b>11,760</b> TDZE <b>73</b> Arprt Elev <b>109</b>
------------------------------	-------------------------	--

[USAF]

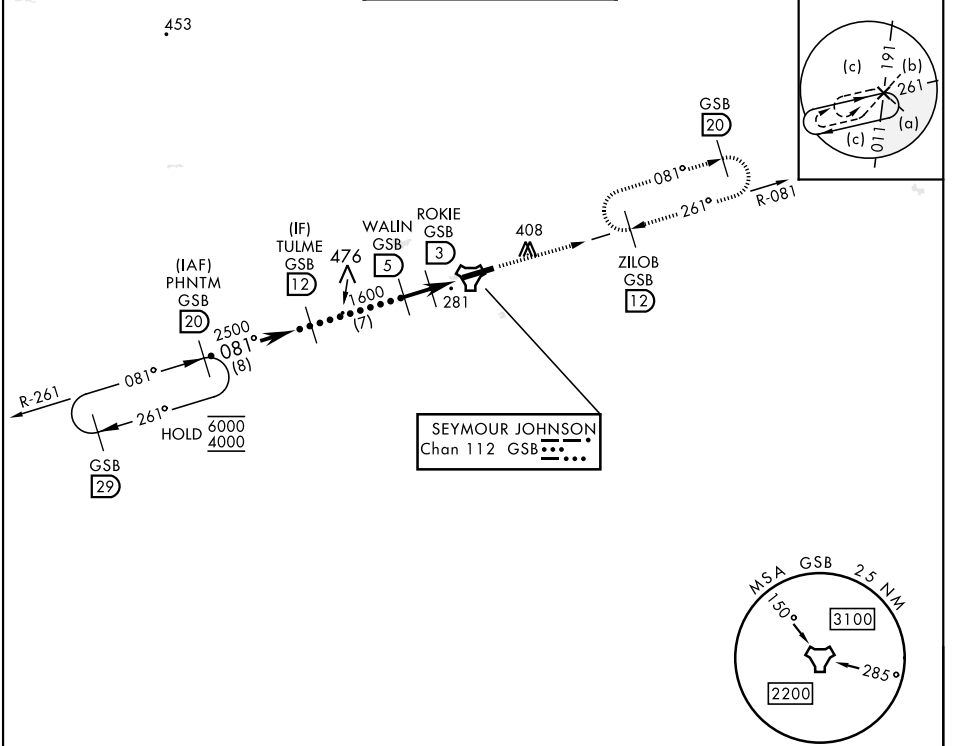
MISSED APPROACH: Climb to 2300 via GSB TACAN R-081 to ZILOB and hold.

▼ \* When ALS inop, increase vis to 1 3/8 miles.  
 \*\* Circling N of Rwy 8-26 not authorized.

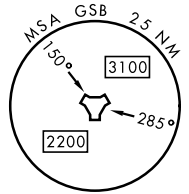


ATIS ★ <b>317.625</b>	APP CON <b>123.7 290.9</b> (258°- 110°) <b>119.7 273.6</b> (111°- 257°)	TOWER ★ <b>126.25 370.875</b>	GND CON <b>132.45 275.8</b>	CLNC DEL <b>128.025 270.8</b>
--------------------------	---	----------------------------------	--------------------------------	----------------------------------

453



SEYMOUR JOHNSON  
Chan 112 GSB ●●●●

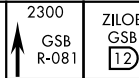


SE-2, 26 DEC 2024 to 23 JAN 2025

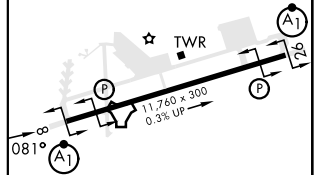
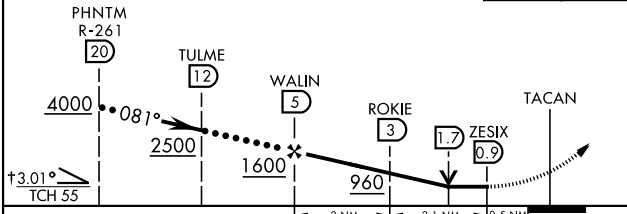
SE-2, 26 DEC 2024 to 23 JAN 2025

EMERG SAFE ALT 100 NM 3700

† WALIN to ZESIX



ELEV 109	TDZE 73
----------	---------



CATEGORY	C	D	E
S-8 *	540/50	467 (500-1)	
CIRCLING **	680-1 1/2 571 (600-1 1/2)	740-2 631 (700-2)	740-2 1/4 631 (700-2 1/4)

HIRL Rwy 8-26

GOLDSBORO, NORTH CAROLINA

35° 20' N-77° 58' W

SEYMOUR JOHNSON AFB (KGSB)

Amdt 8 03NOV22

# HI-TACAN Z RWY 8