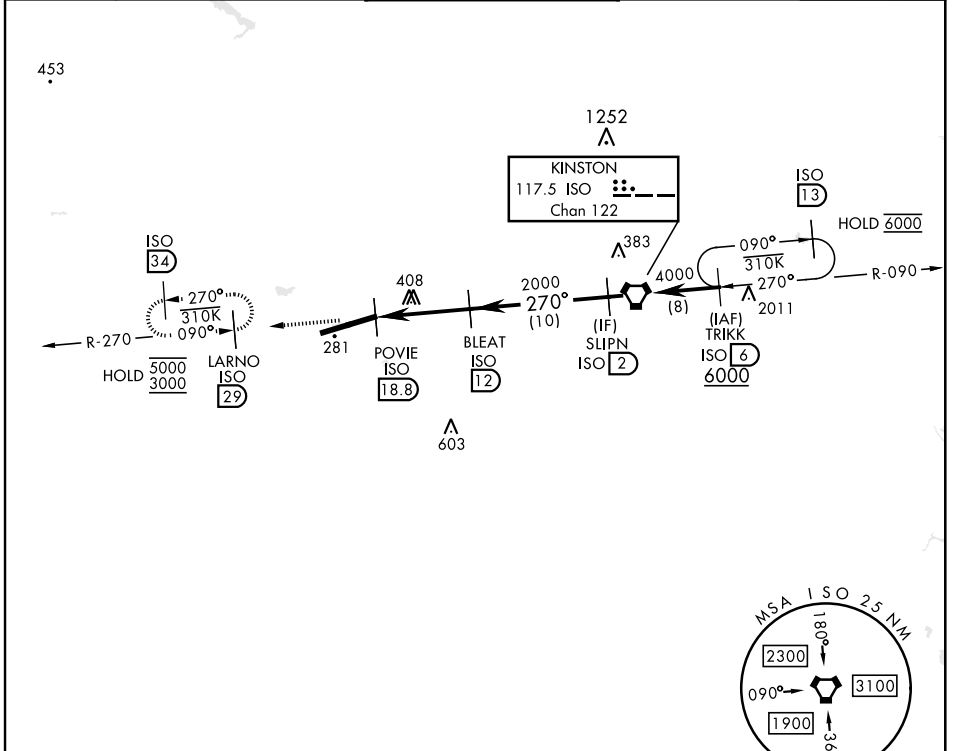


TACAN-A

KINSTON ISO 117.5 Chan 122	APCH CRS 270°	Rwy Idg TDZE Arprt Elev N/A 109	[USAF]	SEYMOUR JOHNSON AFB (KGSB)
--	-------------------------	--	--------	----------------------------

▼ Circling not authorized from Rwy 8 clockwise to RWY 26.
 MISSED APPROACH: Climb to 3000 via ISO VORTAC R-270 to LARNO and hold; continue climb-in-hold to 3000.

ATIS ★ 317.625	APP CON 123.7 290.9 (258°-110°) 119.7 273.6 (111°-257°)	TOWER ★ 126.25 370.875	GND CON 132.45 275.8	CLNC DEL 128.025 270.8
--------------------------	---	----------------------------------	--------------------------------	----------------------------------



SE-2, 26 DEC 2024 to 23 JAN 2025

SE-2, 26 DEC 2024 to 23 JAN 2025

EMERG SAFE ALT 100 NM 4100

ELEV 109	TDZE N/A	3000 ISO R-270	LARNO R-270 ISO 29	TRIKK 6 6000	
FAF to MAP 6.8 NM					
Knots	60	90	120	150	180
Min:Sec	6:48	4:32	3:24	2:43	2:16
CATEGORY	A	B	C	D	E
<input checked="" type="checkbox"/> CIRCLING	740-1	631 (700-1)	740-1 $\frac{3}{4}$ 631 (700-1 $\frac{3}{4}$)	740-2 631 (700-2)	740-2 $\frac{1}{4}$ 631 (700-2 $\frac{1}{4}$)

TACAN-A