

WAAS CH 69325 W09A	APP CRS 093°	Rwy Idg TDZE Apt Elev	6050 820 827
--	------------------------	-----------------------------	---

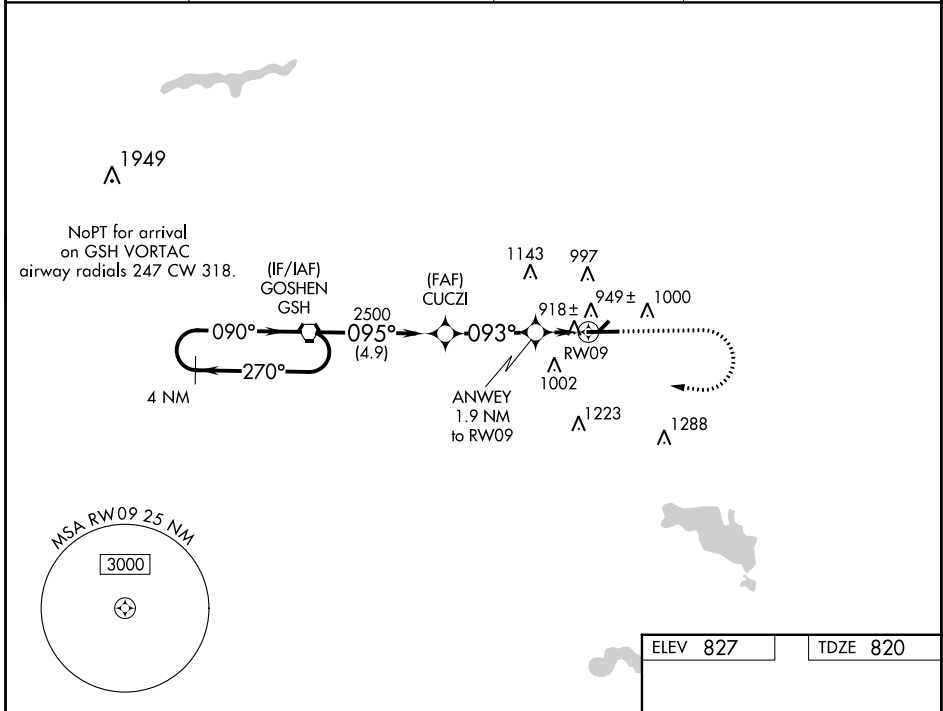
RNAV (GPS) RWY 9

GOSHEN MUNI (GSH)

⚠ DME/DME RNP-0.3 NA. Visibility reduction by helicopters NA. VDP NA with Warsaw altimeter setting. Circling to Rwy 5/23 NA. When local altimeter setting not received, use Warsaw altimeter setting and increase all MDAs 40 feet; increase LP and LNAV Cats C/D visibility 1/8 SM, and Circling Cat D visibility 1/4 SM.

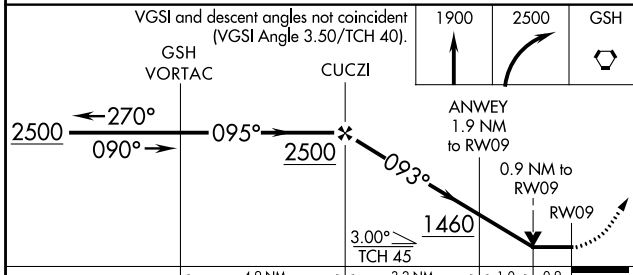
⚠ MISSED APPROACH: Climb to 1900 then climbing right turn to 2500 direct GSH VORTAC and hold.

ASOS 121.45	SOUTH BEND APP CON * 132.05 257.8	CLNC DEL 125.25	UNICOM 123.05 (CTAF) 📶
-----------------------	---	---------------------------	---

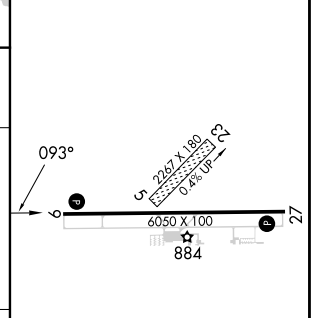


EC-2, 26 DEC 2024 to 23 JAN 2025

EC-2, 26 DEC 2024 to 23 JAN 2025



ELEV 827	TDZE 820
-----------------	-----------------



CATEGORY	A	B	C	D
LP MDA		1180-1	360 (400-1)	
LNAV MDA		1200-1	380 (400-1)	
CIRCLING	1300-1 473 (500-1)	1320-1 493 (500-1)	1500-2 673 (700-2)	1540-2 1/4 713 (800-2 1/4)

HIRL Rwy 9-27 **📶**
REIL Rwy 9 and 27 **📶**