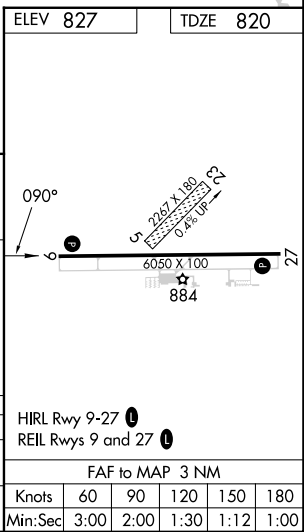
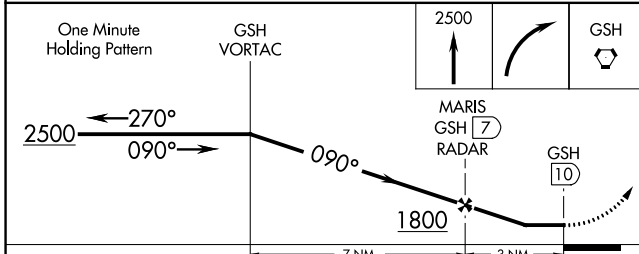
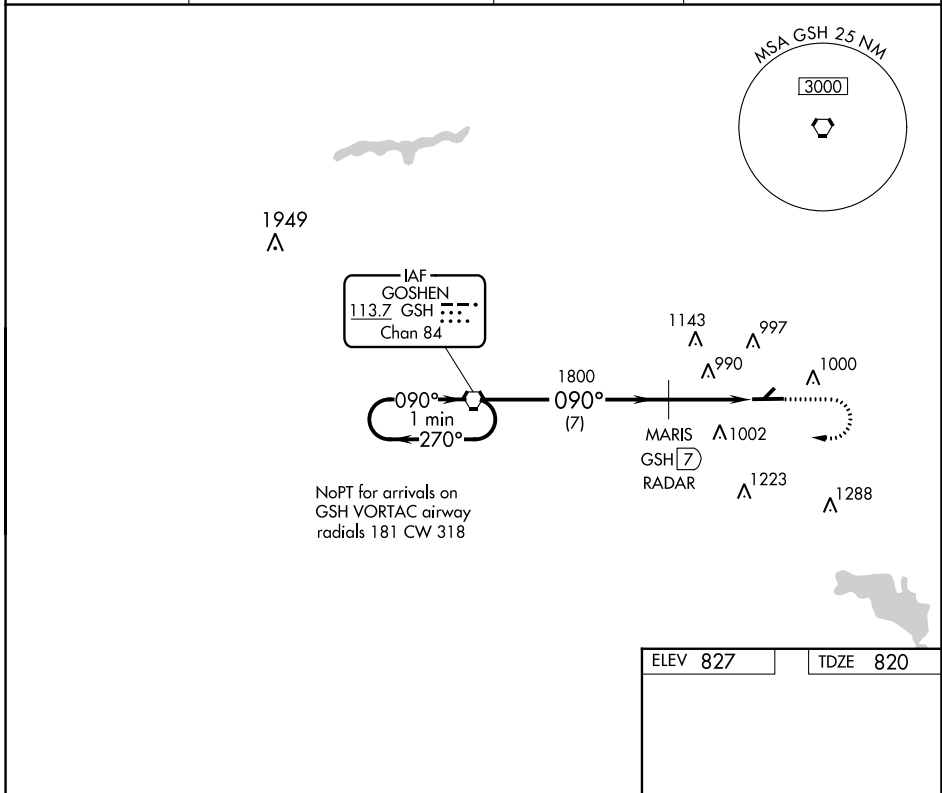


VORTAC GSH	APP CRS	Rwy Idg	6050
113.7	090°	TDZE	820
Chan 84		Apt Elev	827

VOR RWY 9

GOSHEN MUNI (GSH)

DME or RADAR required.		MISSED APPROACH: Climb to 2500 then right turn direct GSH VORTAC and hold.	
⚠ Circling NA to Rwy 5 and 23. ⚠ Rwy 9 helicopter visibility reduction below 3/4 SM NA.			
ASOS	SOUTH BEND APP CON *	CLNC DEL	UNICOM
121.45	132.05 257.8	125.25	123.05 (CTAF) 1



EC-2, 26 DEC 2024 to 23 JAN 2025

EC-2, 26 DEC 2024 to 23 JAN 2025