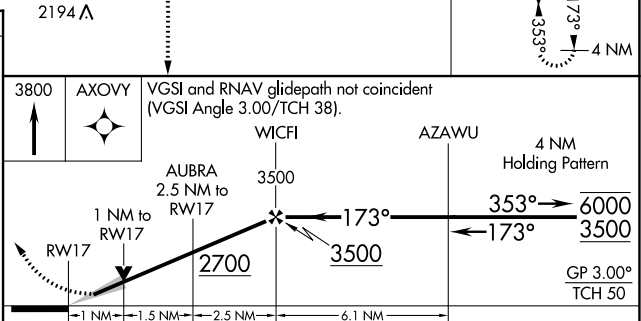
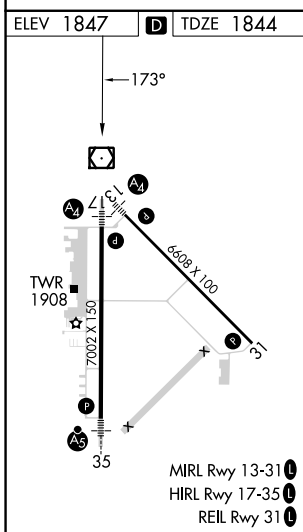
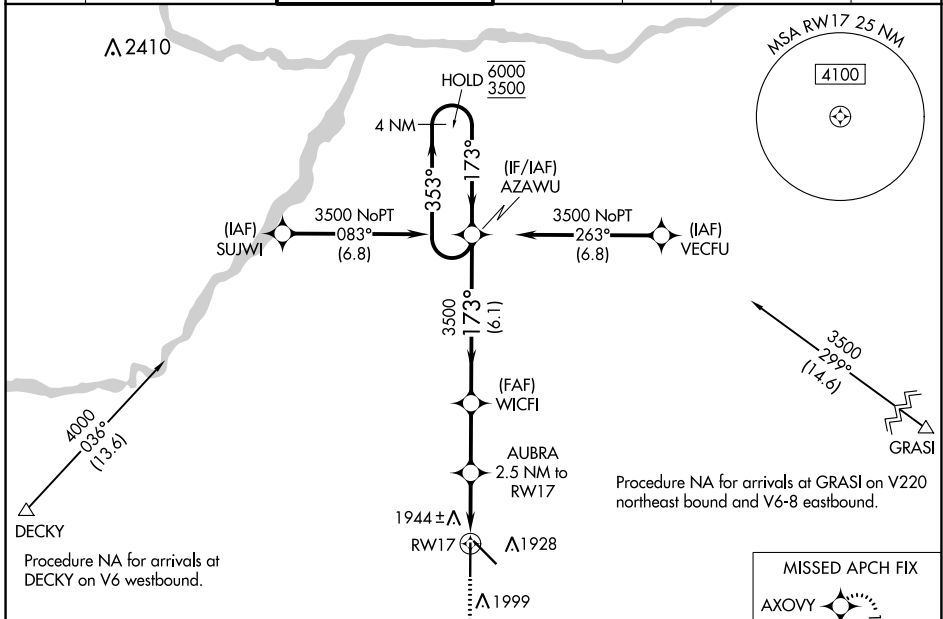


WAAS CH 60999 W17A	APP CRS 173°	Rwy Idg TDZE 1844 Apt Elev 1847	7002
--	------------------------	---	-------------

RNAV (GPS) RWY 17

CENTRAL NEBRASKA RGNL (G.R.I)

RNP APCH - GPS.		MALSP		MISSED APPROACH: Climb to 3800 direct AXOVY and hold.		
<p>⚠ Inop table does not apply to LPV. For uncompensated Baro-VNAV systems, LNAV/VNAV NA below -23°C or above 54°C. For inop ALS, increase LNAV/VNAV all Cats visibility to ½ SM.</p>		<p>⚠</p>				
ATIS 127.4	MINNEAPOLIS CENTER 119.4 278.8	GRAND ISLAND TOWER * 118.2 (CTAF) 0 259.3	GND CON 121.9 259.3	CLNC DEL 121.9	CLNC DEL 126.05 (when twr closed)	UNICOM 122.95



CATEGORY	A	B	C	D
LPV DA		2044-¾	200 (200-¾)	
LNAV/VNAV DA		2125-¾	281 (300-¾)	
LNAV MDA		2200-¾	356 (400-¾)	
CIRCLING	2300-1	453 (500-1)	2400-1½ 553 (600-1½)	2560-2¼ 713 (800-2¼)

NC-2, 26 DEC 2024 to 23 JAN 2025

NC-2, 26 DEC 2024 to 23 JAN 2025