

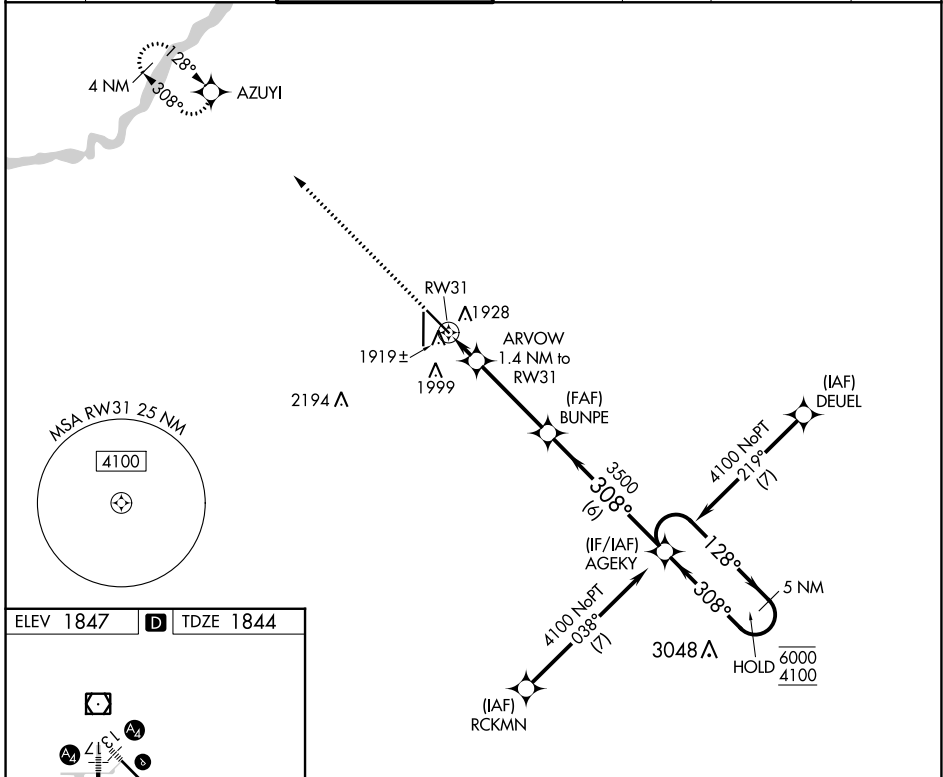
APP CRS	Rwy Idg	6608
308°	TDZE	1844
	Apt Elev	1847

RNAV (GPS) RWY 31

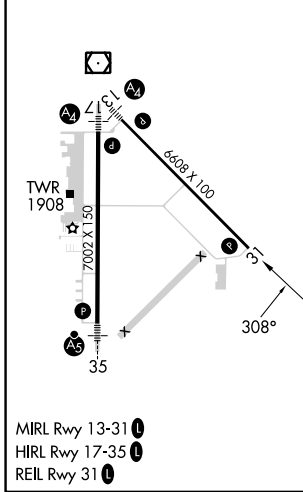
CENTRAL NEBRASKA RGNL (GRI)

RNP APCH - GPS.		MISSED APPROACH: Climb to 4000 direct AZUYI and hold.			
<p>V VDP NA when using Aurora altimeter setting. When local altimeter setting not received, use Aurora altimeter setting and increase all MDA 60 feet; increase LNAV Cats C/D visibility 1/8 SM and Circling Cats C/D visibility 1/4 SM.</p>					

ATIS	MINNEAPOLIS CENTER	GRAND ISLAND TOWER *	GND CON	CLNC DEL	CLNC DEL	UNICOM
127.4	119.4 278.8	118.2 (CTAF) 0 259.3	121.9 259.3	121.9	126.05 (when twr closed)	122.95



ELEV 1847	D	TDZE 1844
-----------	----------	-----------



4000	AZUYI	ARVOW 1.4 NM to RW31	BUNPE	AGEKY	5 NM Holding Pattern
		0.9 NM to RW31	3.00° TCH 42	3500	128° → 6000 ← 308° 4100
		0.9	0.5	3.6 NM	6 NM
CATEGORY	A	B	C	D	
LNAV MDA	2180-1 336 (400-1)				
CIRCLING	2300-1	453 (500-1)	2400-1½ 553 (600-1½)	2560-2¼ 713 (800-2¼)	

NC-2, 26 DEC 2024 to 23 JAN 2025

NC-2, 26 DEC 2024 to 23 JAN 2025